



SZABO SCANDIC

Part of Europa Biosite

Produktinformation



Forschungsprodukte & Biochemikalien



Zellkultur & Verbrauchsmaterial



Diagnostik & molekulare Diagnostik



Laborgeräte & Service

Weitere Information auf den folgenden Seiten!
See the following pages for more information!



Lieferung & Zahlungsart

siehe unsere [Liefer- und Versandbedingungen](#)

Zuschläge

- Mindermengenzuschlag
- Trockeneiszuschlag
- Gefahrgutzuschlag
- Expressversand

SZABO-SCANDIC HandelsgmbH

Quellenstraße 110, A-1100 Wien

T. +43(0)1 489 3961-0

F. +43(0)1 489 3961-7

mail@szabo-scandic.com

www.szabo-scandic.com

[linkedin.com/company/szaboscandic](https://www.linkedin.com/company/szaboscandic) 

NPHP1 purified MaxPab mouse polyclonal antibody (B01P) MaxPab®

Catalog # : H00004867-B01P

規格 : [50 ug]

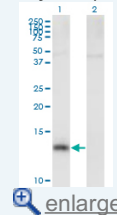
[List All](#)

Specification

Product Description:	Mouse polyclonal antibody raised against a full-length human NPHP1 protein.
Immunogen:	NPHP1 (NP_997064.1, 1 a.a. ~ 121 a.a) full-length human protein.
Sequence:	MLARRQRDPLQALRRRNQELKQQVDSLLSESQLKEALEPNKRQHYYQR CIQLKQAIDENKNALQKLSKADESAPVANYNQRKEEHTLLDKLTQQLQG LAVTISRENITEYASFLPFFFLF
Host:	Mouse
Reactivity:	Human
Quality Control Testing:	Antibody reactive against mammalian transfected lysate.
Storage Buffer:	In 1x PBS, pH 7.4
Storage Instruction:	Store at -20°C or lower. Aliquot to avoid repeated freezing and thawing.
MSDS:	Download
Datasheet:	Download

Application Image

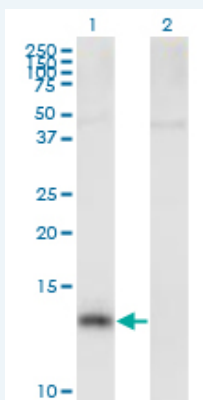
Western Blot (Transfected lysate)



[enlarge](#)

Applications

Western Blot (Transfected lysate)



Western Blot analysis of NPHP1 expression in transfected 293T cell line ([H00004867-T01](#)) by NPHP1 MaxPab polyclonal antibody.

Lane 1: NPHP1 transfected lysate(13.31 KDa).
Lane 2: Non-transfected lysate.

[Protocol Download](#)

Gene Information

Entrez GeneID: [4867](#)

GeneBank [NM_207181.1](#)
Accession#:

Protein [NP_997064.1](#)
Accession#:

Gene Name: NPHP1

Gene Alias: FLJ97602,JBTS4,NPH1,SLSN1

Gene nephronophthisis 1 (juvenile)
Description:

Omim ID: [256100](#), [266900](#), [607100](#), [609583](#)

Gene Ontology: [Hyperlink](#)

Gene Summary: This gene encodes a protein with src homology domain 3 (SH3) patterns. This protein interacts with Crk-associated substrate, and it appears to function in the control of cell division, as well as in cell-cell and cell-matrix adhesion signaling, likely as part of a multifunctional complex localized in actin- and microtubule-based structures. Mutations in this gene cause familial juvenile nephronophthisis type 1, a kidney disorder involving both tubules and glomeruli. Defects in this gene are also associated with Senior-Loken syndrome type 1, also referred to as juvenile nephronophthisis with Leber amaurosis, which is characterized by kidney and eye disease, and with Joubert syndrome type 4, which is characterized by cerebellar ataxia, oculomotor apraxia, psychomotor delay and neonatal breathing abnormalities, sometimes including retinal dystrophy and renal disease. Multiple transcript variants encoding different isoforms have been found for this gene. [provided by RefSeq]

Other nephrocystin-1
Designations:

Related Disease

[Abnormalities, Multiple Cerebellar Ataxia Genetic Predisposition to Disease](#)
[Hyperparathyroidism, Secondary Kidney Diseases, Cystic Mental Retardation Syndrome](#)