



SZABO SCANDIC

Part of Europa Biosite

Produktinformation



Forschungsprodukte & Biochemikalien



Zellkultur & Verbrauchsmaterial



Diagnostik & molekulare Diagnostik



Laborgeräte & Service

Weitere Information auf den folgenden Seiten!
See the following pages for more information!



Lieferung & Zahlungsart

siehe unsere [Liefer- und Versandbedingungen](#)

Zuschläge

- Mindermengenzuschlag
- Trockeneiszuschlag
- Gefahrgutzuschlag
- Expressversand

SZABO-SCANDIC HandelsgmbH

Quellenstraße 110, A-1100 Wien

T. +43(0)1 489 3961-0

F. +43(0)1 489 3961-7

mail@szabo-scandic.com

www.szabo-scandic.com

[linkedin.com/company/szaboscandic](https://www.linkedin.com/company/szaboscandic) 

NPHS1 monoclonal antibody (M14), clone 3D2

Catalog # : H00004868-M14

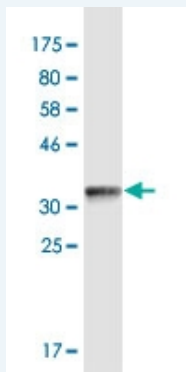
規格 : [100 ug]

[List All](#)

Specification

Product Description:	Mouse monoclonal antibody raised against a partial recombinant NPHS1.
Immunogen:	NPHS1 (NP_004637.1, 33 a.a. ~ 122 a.a) partial recombinant protein with GST tag. MW of the GST tag alone is 26 KDa.
Sequence:	GFWALPENLTVVEGASVELRCGVSTPGSAVQWAKDGLLLGPDPRIPGF PRYRLEGDPARGEFHLHIEACDLSDDAEYECQVGRSEMGPEL
Host:	Mouse
Reactivity:	Human
Isotype:	IgG2a Kappa

Quality Control Testing: Antibody Reactive Against Recombinant Protein.



Western Blot detection against Immunogen (35.64 KDa) .

Storage Buffer: In 1x PBS, pH 7.4

Storage Instruction: Store at -20°C or lower. Aliquot to avoid repeated freezing and thawing.

Datasheet:  [Download](#)

Applications

Western Blot (Recombinant protein)

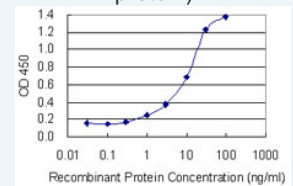
 [Protocol Download](#)


Sandwich ELISA (Recombinant protein)

Application Image

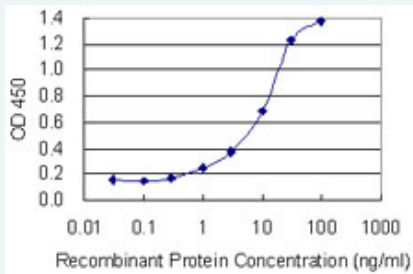
Western Blot (Recombinant protein)

Sandwich ELISA (Recombinant protein)



 [enlarge](#)

ELISA



Detection limit for recombinant GST tagged NPHS1 is 0.1 ng/ml as a capture antibody.

 [Protocol Download](#)

ELISA

Gene Information

Entrez GeneID: [4868](#)

GeneBank [NM_004646](#)

Accession#:

Protein [NP_004637.1](#)

Accession#:

Gene Name: NPHS1

Gene Alias: CNF, NPHN

Gene Description: nephrosis 1, congenital, Finnish type (nephrin)

Omim ID: [256300](#), [602716](#)

Gene Ontology: [Hyperlink](#)

Gene Summary: Nephrin is a kidney glomerular filtration barrier protein that is an essential component of the interpodocyte-spanning slit diaphragm. Mutations in the nephrin gene are associated with congenital nephrotic syndrome (NPHS1; MIM 256300).[supplied by OMIM]

Other Designations: nephrin, renal glomerulus-specific cell adhesion receptor

Related Disease

[Cardiovascular Diseases](#) [Chronic Disease](#) [Diabetes Mellitus, Type 1](#)
[Diabetes Mellitus, Type 2](#) [Diabetes, type 1](#) [Diabetic Nephropathies](#) [Disease Progression](#)
[Edema](#) [Genetic Predisposition to Disease](#) [Glomerulonephritis](#) [Glomerulonephritis, IGA](#)
[Glomerulonephritis, Membranous](#) [Hematuria](#) [Hyperparathyroidism, Secondary](#)
[Hypertension](#) [Kidney Diseases](#) [Kidney Failure, Chronic](#) [Nephrosis, Lipoid](#)
[Nephrotic Syndrome](#)

... see more