



SZABO SCANDIC

Part of Europa Biosite

Produktinformation



Forschungsprodukte & Biochemikalien



Zellkultur & Verbrauchsmaterial



Diagnostik & molekulare Diagnostik



Laborgeräte & Service

Weitere Information auf den folgenden Seiten!
See the following pages for more information!



Lieferung & Zahlungsart

siehe unsere [Liefer- und Versandbedingungen](#)

Zuschläge

- Mindermengenzuschlag
- Trockeneiszuschlag
- Gefahrgutzuschlag
- Expressversand

SZABO-SCANDIC HandelsgmbH

Quellenstraße 110, A-1100 Wien

T. +43(0)1 489 3961-0

F. +43(0)1 489 3961-7

mail@szabo-scandic.com

www.szabo-scandic.com

[linkedin.com/company/szaboscandic](https://www.linkedin.com/company/szaboscandic)

NPPB 293T Cell Transient Overexpression Lysate(Denatured)

Catalog # : H00004879-T01

規格 : [100 uL]

[List All](#)

Specification

Transfected Cell Line: 293T

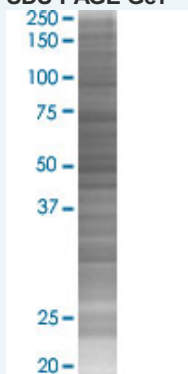
Plasmid: pCMV-NPPB full-length

Host: Human

Theoretical MW (kDa): 14.7

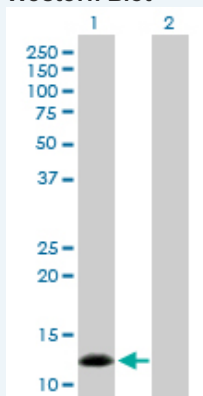
Quality Control Testing: Transient overexpression cell lysate was tested with Anti-NPPB antibody (H00004879-D01P) by Western Blots.

SDS-PAGE Gel



NPPB transfected lysate.

Western Blot



Lane 1: NPPB transfected lysate (14.70 KDa)

Lane 2: Non-transfected lysate.

Storage Buffer: 1X Sample Buffer (50 mM Tris-HCl, 2% SDS, 10% glycerol, 300 mM 2-mercaptoethanol, 0.01% Bromophenol blue)

Storage Instruction: Store at -80°C. Aliquot to avoid repeated freezing and thawing.

MSDS:  [Download](#)

Applications

Western Blot

Gene Information

Entrez GeneID: [4879](#)

GeneBank Accession#: [NM_002521](#)

Protein Accession#: [NP_002512.1](#)

Gene Name: NPPB

Gene Alias: BNP

Gene Description: natriuretic peptide precursor B

Omim ID: [600295](#)

Gene Ontology: [Hyperlink](#)

Gene Summary: This gene is a member of the natriuretic peptide family and encodes a secreted protein which functions as a cardiac hormone. The protein undergoes two cleavage events, one within the cell and a second after secretion into the blood. The protein's biological actions include natriuresis, diuresis, vasorelaxation, inhibition of renin and aldosterone secretion, and a key role in cardiovascular homeostasis. A high concentration of this protein in the bloodstream is indicative of heart failure. Mutations in this gene have been associated with postmenopausal osteoporosis. [provided by RefSeq]

Other Designations: OTTHUMP00000002506,OTTHUMP00000044486,brain type natriuretic peptide,natriuretic protein

Gene Pathway

[Vascular smooth muscle contraction](#)

Related Disease

[Alzheimer Disease](#) [Alzheimer disease](#) [Atherosclerosis](#) [Atherosclerosis](#)
[Cardiomyopathy](#), [Hypertrophic Cardiovascular Diseases](#) [Cleft Lip](#) [Cleft Palate](#)
[Diabetes Complications](#) [Diabetes Mellitus, Type 1](#) [Diabetes Mellitus, Type 2](#)
[Diabetic Nephropathies](#) [Edema](#) [Genetic Predisposition to Disease](#) [Heart Failure, Systolic](#)
[Hypertension](#) [Hypertension, Renovascular](#) [Hypertrophy, Left Ventricular](#) [Insulin Resistance](#)

... see more