



SZABO SCANDIC

Part of Europa Biosite

Produktinformation



Forschungsprodukte & Biochemikalien



Zellkultur & Verbrauchsmaterial



Diagnostik & molekulare Diagnostik



Laborgeräte & Service

Weitere Information auf den folgenden Seiten!
See the following pages for more information!



Lieferung & Zahlungsart

siehe unsere [Liefer- und Versandbedingungen](#)

Zuschläge

- Mindermengenzuschlag
- Trockeneiszuschlag
- Gefahrgutzuschlag
- Expressversand

SZABO-SCANDIC HandelsgmbH

Quellenstraße 110, A-1100 Wien

T. +43(0)1 489 3961-0

F. +43(0)1 489 3961-7

mail@szabo-scandic.com

www.szabo-scandic.com

[linkedin.com/company/szaboscandic](https://www.linkedin.com/company/szaboscandic) 



NPY1R purified MaxPab mouse polyclonal antibody (B01P) MaxPab®

Catalog # : H00004886-B01P

規格 : [50 ug]

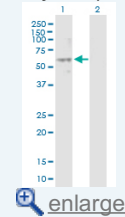
[List All](#)


Specification

| | |
|---------------------------------|---|
| Product Description: | Mouse polyclonal antibody raised against a full-length human NPY1R protein. |
| Immunogen: | NPY1R (AAH71720.1, 1 a.a. ~ 384 a.a) full-length human protein. |
| Sequence: | MNSTLFSQVENHSVHSNFSEKNAQLLAFENDDCHLPLAMIFTLALAYGAVI ILGVSGNLALIIILKQKEMRNVNLIIVNLSFSDLLVAIMCLPFTFVYTLMDH VWFGEAMCKLNPFVQCVSITVSIFSLVLI AVERHQLIINPRGWRPNRHAY VGI A VIWVLA VASSLPFLIYQVMTDEPFQNVTLDAYKDYVCFDQFSPDS HRLSYTTLLLVLQYFGPLCFIFICYFKIYIRLKRNNMMDKMRDNKYRSSE TKRINIMLLSIVAVAVCWLP LTI FNTVFDWNHQIATCNHNLLFLLCHLTAMI STCVNPIFYGFLNKNFQRDLQFFNFCDFRSRDDDYETIAMSTMHTDVS KTS LKQASPVAFK KINNDDNEKI |
| Host: | Mouse |
| Reactivity: | Human |
| Quality Control Testing: | Antibody reactive against mammalian transfected lysate. |
| Storage Buffer: | In 1x PBS, pH 7.4 |
| Storage Instruction: | Store at -20°C or lower. Aliquot to avoid repeated freezing and thawing. |
| MSDS: |  Download |
| Datasheet: |  Download |

Application Image

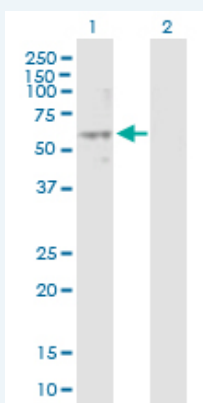
Western Blot (Transfected lysate)



 [enlarge](#)

Applications


Western Blot (Transfected lysate)



Western Blot analysis of NPY1R expression in transfected 293T cell line ([H00004886-T01](#)) by NPY1R MaxPab polyclonal antibody.

Lane 1: NPY1R transfected lysate(44.40 KDa).

Lane 2: Non-transfected lysate.

 [Protocol Download](#)

Gene Information

Entrez GeneID: [4886](#)

GeneBank Accession#: [NM_000909](#)

Protein Accession#: [AAH71720.1](#)

Gene Name: NPY1R

Gene Alias: NPYR

Gene Description: neuropeptide Y receptor Y1

Omim ID: [162641](#)

Gene Ontology: [Hyperlink](#)

Gene Summary: Neuropeptide Y (NPY; MIM 162640) is one of the most abundant neuropeptides in the mammalian nervous system and exhibits a diverse range of important physiologic activities, including effects on psychomotor activity, food intake, regulation of central endocrine secretion, and potent vasoactive effects on the cardiovascular system. Two major subtypes of NPY (Y1 and Y2) have been defined by pharmacologic criteria. NPY receptors, such as NPY1R, have been identified in a variety of tissues, including brain, spleen, small intestine, kidney, testis, placenta, and aortic smooth muscle (Herzog et al., 1992 [PubMed 1321422]).[supplied by OMIM]

Other Designations: -

Gene Pathway

[Neuroactive ligand-receptor interaction](#)

Related Disease

[Alcoholism](#) [Anorexia Nervosa](#) [Appetite](#) [Attention Deficit Disorder with Hyperactivity](#) [Autistic Disorder](#) [Bulimia](#) [Cardiovascular Diseases](#) [Cocaine-Related Disorders](#) [Diabetes Mellitus, Type 2](#) [Disease Models, Animal](#) [Edema](#) [Genetic Predisposition to Disease](#) [Hypertrophy, Left Ventricular](#) [Liver Diseases](#) [NARP](#) [Obesity](#) [Obesity](#) [Panic Disorder](#) [Puberty, Precocious](#)

... see more