



SZABO SCANDIC

Part of Europa Biosite

Produktinformation



Forschungsprodukte & Biochemikalien



Zellkultur & Verbrauchsmaterial



Diagnostik & molekulare Diagnostik



Laborgeräte & Service

Weitere Information auf den folgenden Seiten!
See the following pages for more information!



Lieferung & Zahlungsart

siehe unsere [Liefer- und Versandbedingungen](#)

Zuschläge

- Mindermengenzuschlag
- Trockeneiszuschlag
- Gefahrgutzuschlag
- Expressversand

SZABO-SCANDIC HandelsgmbH

Quellenstraße 110, A-1100 Wien

T. +43(0)1 489 3961-0

F. +43(0)1 489 3961-7

mail@szabo-scandic.com

www.szabo-scandic.com

[linkedin.com/company/szaboscandic](https://www.linkedin.com/company/szaboscandic) 

NPY1R monoclonal antibody (M03), clone 2G2

Catalog # : H00004886-M03

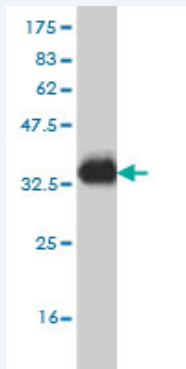
規格 : [100 ug]

[List All](#)

Specification

Product Description:	Mouse monoclonal antibody raised against a partial recombinant NPY1R.
Immunogen:	NPY1R (AAH36657, 1 a.a. ~ 115 a.a) partial recombinant protein with GST tag. MW of the GST tag alone is 26 KDa.
Sequence:	MNSTLFSQVENHSVHSNFSEKNAQLLAFENDDCHLPLAMIFTLALAYGAVI ILGVSGNLALIIILKQKEMRNVTNIIIVNLSFSDLLVAIMCLPFTFVYTLMDH WVFGAMCKL
Host:	Mouse
Reactivity:	Human
Isotype:	IgG2a Kappa

Quality Control Testing: Antibody Reactive Against Recombinant Protein.



Western Blot detection against Immunogen (38.39 KDa) .

Storage Buffer: In 1x PBS, pH 7.4

Storage Instruction: Store at -20°C or lower. Aliquot to avoid repeated freezing and thawing.

MSDS: [Download](#)

Datasheet: [Download](#)

Publication Reference

1. [Neuropeptide Y and Neuropeptide Y Y5 Receptor Interaction Restores Impaired Growth Potential of Aging Bone Marrow Stromal Cells.](#)
Igura K, Haider HK, Ahmed RP, Sheriff S, Ashraf M. Rejuvenation Res. 2011 May 19. [Epub ahead of print]

Applications

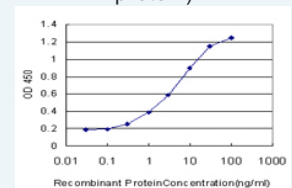
Western Blot (Recombinant protein)

[Protocol Download](#)

Application Image

Western Blot (Recombinant protein)

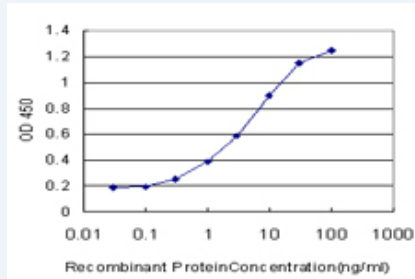
Sandwich ELISA (Recombinant protein)



[enlarge](#)

ELISA

Sandwich ELISA (Recombinant protein)



Detection limit for recombinant GST tagged NPY1R is approximately 0.1ng/ml as a capture antibody.

 [Protocol Download](#)

ELISA

Gene Information

Entrez GeneID: [4886](#)

GeneBank [BC036657](#)

Accession#:

Protein [AAH36657](#)

Accession#:

Gene Name: NPY1R

Gene Alias: NPYR

Gene neuropeptide Y receptor Y1

Description:

Omim ID: [162641](#)

Gene Ontology: [Hyperlink](#)

Gene Summary: Neuropeptide Y (NPY; MIM 162640) is one of the most abundant neuropeptides in the mammalian nervous system and exhibits a diverse range of important physiologic activities, including effects on psychomotor activity, food intake, regulation of central endocrine secretion, and potent vasoactive effects on the cardiovascular system. Two major subtypes of NPY (Y1 and Y2) have been defined by pharmacologic criteria. NPY receptors, such as NPY1R, have been identified in a variety of tissues, including brain, spleen, small intestine, kidney, testis, placenta, and aortic smooth muscle (Herzog et al., 1992 [PubMed 1321422]).[supplied by OMIM]

Other Designations: -

Gene Pathway

[Neuroactive ligand-receptor interaction](#)

Related Disease

[Alcoholism](#) [Anorexia Nervosa](#) [Appetite](#) [Attention Deficit Disorder with Hyperactivity](#) [Autistic Disorder](#) [Bulimia](#) [Cardiovascular Diseases](#) [Cocaine-Related Disorders](#) [Diabetes Mellitus, Type 2](#) [Disease Models, Animal](#) [Edema](#) [Genetic Predisposition to Disease](#) [Hypertrophy, Left Ventricular](#) [Liver Diseases](#) [NARP](#) [Obesity](#) [Obesity](#) [Panic Disorder](#) [Puberty, Precocious](#)

... see more

