



# SZABO SCANDIC

Part of Europa Biosite

## Produktinformation



Forschungsprodukte & Biochemikalien



Zellkultur & Verbrauchsmaterial



Diagnostik & molekulare Diagnostik



Laborgeräte & Service

Weitere Information auf den folgenden Seiten!  
See the following pages for more information!



### Lieferung & Zahlungsart

siehe unsere [Liefer- und Versandbedingungen](#)

### Zuschläge

- Mindermengenzuschlag
- Trockeneiszuschlag
- Gefahrgutzuschlag
- Expressversand

### SZABO-SCANDIC HandelsgmbH

Quellenstraße 110, A-1100 Wien

T. +43(0)1 489 3961-0

F. +43(0)1 489 3961-7

[mail@szabo-scandic.com](mailto:mail@szabo-scandic.com)

[www.szabo-scandic.com](http://www.szabo-scandic.com)

[linkedin.com/company/szaboscandic](https://www.linkedin.com/company/szaboscandic) 

## NPY1R 293T Cell Transient Overexpression Lysate(Denatured)

Catalog # : H00004886-T01

規格 : [ 100 uL ]

List All

### Specification

**Transfected Cell Line:** 293T

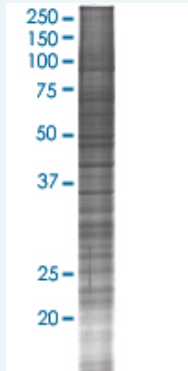
**Plasmid:** pCMV-NPY1R full-length

**Host:** Human

**Theoretical MW (kDa):** 44.4

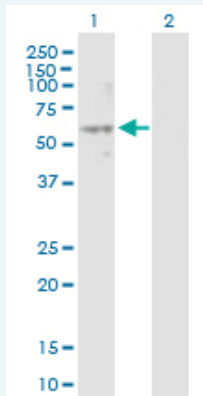
**Quality Control Testing:** Transient overexpression cell lysate was tested with Anti-NPY1R antibody ([H00004886-B01P](#)) by Western Blots.

#### SDS-PAGE Gel



NPY1R transfected lysate.

#### Western Blot



Lane 1: NPY1R transfected lysate ( 44.4 KDa)

Lane 2: Non-transfected lysate.

**Storage Buffer:** 1X Sample Buffer (50 mM Tris-HCl, 2% SDS, 10% glycerol, 300 mM 2-mercaptoethanol, 0.01% Bromophenol blue)

**Storage Instruction:** Store at -80°C. Aliquot to avoid repeated freezing and thawing.

**MSDS:**  [Download](#)

### Applications

### Application Image

Western Blot

## Western Blot

### Gene Information

Entrez GeneID: [4886](#)

GeneBank Accession#: [NM\\_000909](#)

Protein Accession#: [AAH71720.1](#)

Gene Name: NPY1R

Gene Alias: NPYR

Gene Description: neuropeptide Y receptor Y1

Omim ID: [162641](#)

Gene Ontology: [Hyperlink](#)

**Gene Summary:** Neuropeptide Y (NPY; MIM 162640) is one of the most abundant neuropeptides in the mammalian nervous system and exhibits a diverse range of important physiologic activities, including effects on psychomotor activity, food intake, regulation of central endocrine secretion, and potent vasoactive effects on the cardiovascular system. Two major subtypes of NPY (Y1 and Y2) have been defined by pharmacologic criteria. NPY receptors, such as NPY1R, have been identified in a variety of tissues, including brain, spleen, small intestine, kidney, testis, placenta, and aortic smooth muscle (Herzog et al., 1992 [PubMed 1321422]).[supplied by OMIM]

Other Designations: -

### Gene Pathway

[Neuroactive ligand-receptor interaction](#)

### Related Disease

[Alcoholism](#) [Anorexia Nervosa](#) [Appetite](#) [Attention Deficit Disorder with Hyperactivity](#) [Autistic Disorder](#) [Bulimia](#) [Cardiovascular Diseases](#) [Cocaine-Related Disorders](#) [Diabetes Mellitus, Type 2](#) [Disease Models, Animal](#) [Edema](#) [Genetic Predisposition to Disease](#) [Hypertrophy, Left Ventricular](#) [Liver Diseases](#) [NARP](#) [Obesity](#) [Obesity](#) [Panic Disorder](#) [Puberty, Precocious](#)

... see more