



SZABO SCANDIC

Part of Europa Biosite

Produktinformation



Forschungsprodukte & Biochemikalien



Zellkultur & Verbrauchsmaterial



Diagnostik & molekulare Diagnostik



Laborgeräte & Service

Weitere Information auf den folgenden Seiten!
See the following pages for more information!



Lieferung & Zahlungsart

siehe unsere [Liefer- und Versandbedingungen](#)

Zuschläge

- Mindermengenzuschlag
- Trockeneiszuschlag
- Gefahrgutzuschlag
- Expressversand

SZABO-SCANDIC HandelsgmbH

Quellenstraße 110, A-1100 Wien

T. +43(0)1 489 3961-0

F. +43(0)1 489 3961-7

mail@szabo-scandic.com

www.szabo-scandic.com

[linkedin.com/company/szaboscandic](https://www.linkedin.com/company/szaboscandic) 

NPY5R 293T Cell Transient Overexpression Lysate(Denatured)

Catalog # : H00004889-T01

規格 : [100 uL]

List All

Specification

Transfected Cell Line: 293T

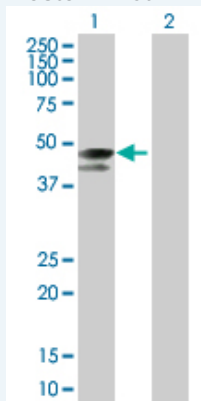
Plasmid: pCMV-NPY5R full-length

Host: Human

Theoretical MW (kDa): 49.06

Quality Control Testing: Transient overexpression cell lysate was tested with Anti-NPY5R antibody ([H00004889-B01](#)) by Western Blots.

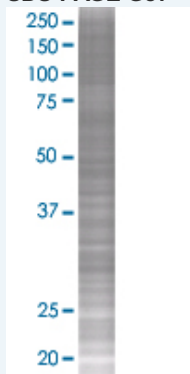
Western Blot



Lane 1: NPY5R transfected lysate (50.7 KDa)

Lane 2: Non-transfected lysate.

SDS-PAGE Gel



NPY5R transfected lysate.

Storage Buffer: 1X Sample Buffer (50 mM Tris-HCl, 2% SDS, 10% glycerol, 300 mM 2-mercaptoethanol, 0.01% Bromophenol blue)

Storage Instruction: Store at -80°C. Aliquot to avoid repeated freezing and thawing.

MSDS: [Download](#)

Applications

Application Image

Western Blot

Western Blot

Gene Information

Entrez GeneID: [4889](#)

GeneBank Accession#: [NM_006174](#)

Protein Accession#: [NP_006165](#)

Gene Name: NPY5R

Gene Alias: NPYR5

Gene Description: neuropeptide Y receptor Y5

Omim ID: [602001](#)

Gene Ontology: [Hyperlink](#)

Other Designations: -

Gene Pathway

[Neuroactive ligand-receptor interaction](#)

Related Disease

[Alcoholism](#) [Anorexia Nervosa](#) [Appetite](#) [Attention Deficit Disorder with Hyperactivity](#) [Autistic Disorder](#) [Bulimia](#) [Cocaine-Related Disorders](#) [Diabetes Mellitus, Type 2](#) [Disease Models, Animal](#) [Dyslipidemias](#) [Genetic Predisposition to Disease](#) [Hypercholesterolemia](#) [Hypertrophy, Left Ventricular](#) [Liver Diseases](#) [Mental Disorders](#) [Metabolic Syndrome X](#) [NARP](#) [Obesity](#) [Obesity](#)

... see more