



# SZABO SCANDIC

Part of Europa Biosite

## Produktinformation



Forschungsprodukte & Biochemikalien



Zellkultur & Verbrauchsmaterial



Diagnostik & molekulare Diagnostik



Laborgeräte & Service

Weitere Information auf den folgenden Seiten!  
See the following pages for more information!



### Lieferung & Zahlungsart

siehe unsere [Liefer- und Versandbedingungen](#)

### Zuschläge

- Mindermengenzuschlag
- Trockeneiszuschlag
- Gefahrgutzuschlag
- Expressversand

### SZABO-SCANDIC HandelsgmbH

Quellenstraße 110, A-1100 Wien

T. +43(0)1 489 3961-0

F. +43(0)1 489 3961-7

[mail@szabo-scandic.com](mailto:mail@szabo-scandic.com)

[www.szabo-scandic.com](http://www.szabo-scandic.com)

[linkedin.com/company/szaboscandic](https://www.linkedin.com/company/szaboscandic) 

## SLC11A2 monoclonal antibody (M03), clone 4G2

Catalog # : H00004891-M03

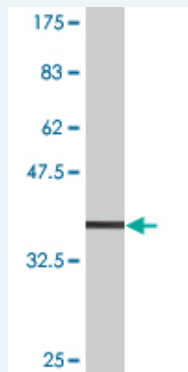
規格 : [ 100 ug ]

[List All](#)

### Specification

<b>Product Description:</b>	Mouse monoclonal antibody raised against a partial recombinant SLC11A2.
<b>Immunogen:</b>	SLC11A2 (NP_000608, 1 a.a. ~ 65 a.a) partial recombinant protein with GST tag. MW of the GST tag alone is 26 KDa.
<b>Sequence:</b>	MVLGPEQKMSDDSVSGDGHGESASLGNINPAYSNP SLSQSPGDSEYFA TYFNEKISIP EEEYS CF
<b>Host:</b>	Mouse
<b>Reactivity:</b>	Human
<b>Isotype:</b>	IgG2b Kappa

**Quality Control Testing:** Antibody Reactive Against Recombinant Protein.



Western Blot detection against Immunogen (32.89 KDa) .

**Storage Buffer:** In 1x PBS, pH 7.4

**Storage Instruction:** Store at -20°C or lower. Aliquot to avoid repeated freezing and thawing.

**MSDS:** [Download](#)

**Datasheet:** [Download](#)

### Applications

**Western Blot (Recombinant protein)**

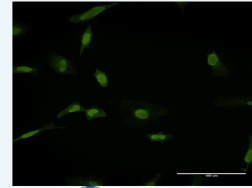
[Protocol Download](#)

**Immunofluorescence**

### Application Image

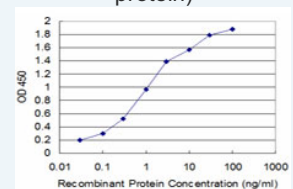
Western Blot (Recombinant protein)

Immunofluorescence



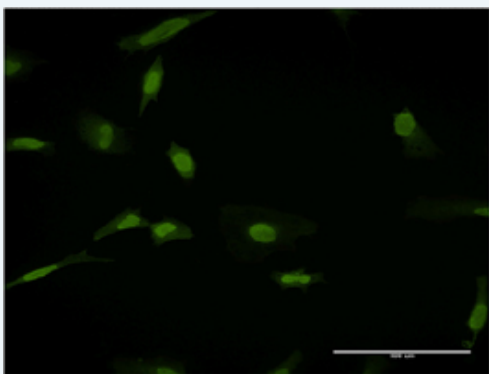
[enlarge](#)

Sandwich ELISA (Recombinant protein)



[enlarge](#)

ELISA

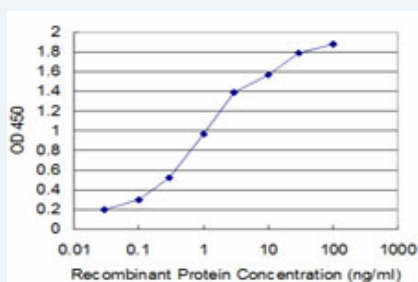


[enlarge this image](#)

Immunofluorescence of monoclonal antibody to SLC11A2 on HeLa cell . [antibody concentration 10 ug/ml]

[Protocol Download](#)

### Sandwich ELISA (Recombinant protein)



Detection limit for recombinant GST tagged SLC11A2 is approximately 0.03ng/ml as a capture antibody.

[Protocol Download](#)

### ELISA

### Gene Information

Entrez GeneID: [4891](#)

GeneBank Accession#: [NM\\_000617](#)

Protein Accession#: [NP\\_000608](#)

Gene Name: SLC11A2

Gene Alias: DCT1,DMT1,FLJ37416,NRAMP2

Gene Description: solute carrier family 11 (proton-coupled divalent metal ion transporters), member 2

Omim ID: [206100](#), [600523](#)

Gene Ontology: [Hyperlink](#)

**Gene Summary:** The SLC11A2 gene encodes a divalent metal transporter (DMT1), which carries iron, manganese, cobalt, nickel, cadmium, lead, copper, and zinc. DMT1 participates in cellular iron absorption at the luminal surface of the duodenum as well as in other areas of the body (Hubert and Hentze, 2002 [PubMed 12209011]; Ludwiczek et al., 2007 [PubMed 17293870]).[supplied by OMIM]

Other Designations: natural resistance-associated macrophage protein 2

### Gene Pathway

[Lysosome](#)

### **Related Disease**

---

[Abortion, Spontaneous](#) [Alzheimer Disease](#) [Alzheimer disease](#) [Cardiovascular Diseases](#)  
[Diabetes Mellitus, Type 2](#) [Edema](#) [Genetic Predisposition to Disease](#) [Hemochromatosis](#)  
[Hereditary hemochromatosis](#) [Iron Overload](#) [Tobacco Use Disorder](#)  
[Tuberculosis, Pulmonary](#)

---

[服務條款](#) | [隱私權政策](#) | [著作及商標](#) | [網站地圖](#)

©2016 亞諾法生技股份有限公司 Abnova Corporation. 版權所有.