



SZABO SCANDIC

Part of Europa Biosite

Produktinformation



Forschungsprodukte & Biochemikalien



Zellkultur & Verbrauchsmaterial



Diagnostik & molekulare Diagnostik



Laborgeräte & Service

Weitere Information auf den folgenden Seiten!
See the following pages for more information!



Lieferung & Zahlungsart

siehe unsere [Liefer- und Versandbedingungen](#)

Zuschläge

- Mindermengenzuschlag
- Trockeneiszuschlag
- Gefahrgutzuschlag
- Expressversand

SZABO-SCANDIC HandelsgmbH

Quellenstraße 110, A-1100 Wien

T. +43(0)1 489 3961-0

F. +43(0)1 489 3961-7

mail@szabo-scandic.com

www.szabo-scandic.com

[linkedin.com/company/szaboscandic](https://www.linkedin.com/company/szaboscandic) 

NTF3 293T Cell Transient Overexpression Lysate(Denatured)

Catalog # : H00004908-T01

規格 : [100 uL]

[List All](#)

Specification

Transfected Cell Line: 293T

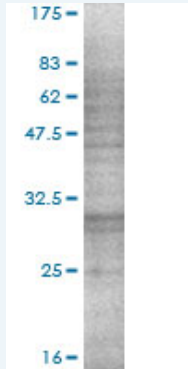
Plasmid: pCMV-NTF3 full-length

Host: Human

Theoretical MW (kDa): 29.4

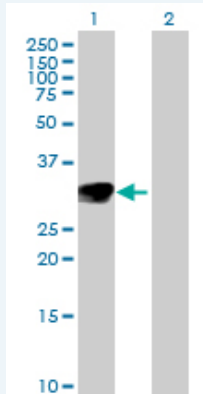
Quality Control Testing: Transient overexpression cell lysate was tested with Anti-NTF3 antibody (H00004908-D01P) by Western Blots.

SDS-PAGE Gel



NTF3 transfected lysate.

Western Blot



Lane 1: NTF3 transfected lysate (29.40 KDa)

Lane 2: Non-transfected lysate.

Storage Buffer: 1X Sample Buffer (50 mM Tris-HCl, 2% SDS, 10% glycerol, 300 mM 2-mercaptoethanol, 0.01% Bromophenol blue)

Storage Instruction: Store at -80°C. Aliquot to avoid repeated freezing and thawing.

MSDS:  [Download](#)

Applications

Western Blot

Gene Information

Entrez GeneID: [4908](#)

GeneBank Accession#: [NM_002527](#)

Protein Accession#: [NP_002518.1](#)

Gene Name: NTF3

Gene Alias: HDNF, MGC129711, NGF-2, NGF2, NT3

Gene Description: neurotrophin 3

Omim ID: [162660](#)

Gene Ontology: [Hyperlink](#)

Gene Summary: The protein encoded by this gene is a member of the neurotrophin family, that controls survival and differentiation of mammalian neurons. This protein is closely related to both nerve growth factor and brain-derived neurotrophic factor. It may be involved in the maintenance of the adult nervous system, and may affect development of neurons in the embryo when it is expressed in human placenta. NTF3-deficient mice generated by gene targeting display severe movement defects of the limbs. The mature peptide of this protein is identical in all mammals examined including human, pig, rat and mouse. [provided by RefSeq]

Other Designations: -

Gene Pathway

[MAPK signaling pathway](#) [Neurotrophin signaling pathway](#)

Related Disease

[Asperger Syndrome](#) [Attention Deficit Disorder with Hyperactivity](#) [Autistic Disorder](#) [Bipolar Disorder](#) [Disease Models, Animal](#) [Eating Disorders](#) [Genetic Predisposition to Disease](#) [Mental Disorders](#) [Neuropsychological Tests](#) [Schizophrenia](#) [Schizophrenia](#) [Social Perception](#) [Tobacco Use Disorder](#)