



# SZABO SCANDIC

Part of Europa Biosite

## Produktinformation



Forschungsprodukte & Biochemikalien



Zellkultur & Verbrauchsmaterial



Diagnostik & molekulare Diagnostik



Laborgeräte & Service

Weitere Information auf den folgenden Seiten!  
See the following pages for more information!



### Lieferung & Zahlungsart

siehe unsere [Liefer- und Versandbedingungen](#)

### Zuschläge

- Mindermengenzuschlag
- Trockeneiszuschlag
- Gefahrgutzuschlag
- Expressversand

### SZABO-SCANDIC HandelsgmbH

Quellenstraße 110, A-1100 Wien

T. +43(0)1 489 3961-0

F. +43(0)1 489 3961-7

[mail@szabo-scandic.com](mailto:mail@szabo-scandic.com)

[www.szabo-scandic.com](http://www.szabo-scandic.com)

[linkedin.com/company/szaboscandic](https://www.linkedin.com/company/szaboscandic) 



## NTF5 monoclonal antibody (M02), clone 1G12

Catalog # : H00004909-M02

規格 : [ 100 ug ]

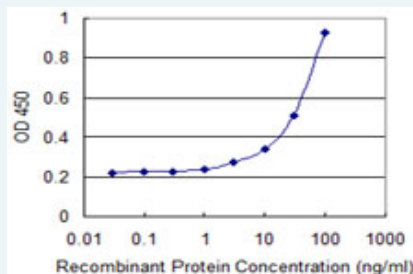
[List All](#)

### Specification

<b>Product Description:</b>	Mouse monoclonal antibody raised against a full-length recombinant NTF5.
<b>Immunogen:</b>	NTF5 (AAH12421, 1 a.a. ~ 210 a.a.) full-length recombinant protein with GST tag. MW of the GST tag alone is 26 KDa.
<b>Sequence:</b>	MLPLPSCSLPILLFLLPSVPIESQPPPSTLPPFLAPEWDLLSPRVLSRG APAGPPLLFLLEAGAFRESAGAPANRSRRGVSETAPASRRGELAVCDAV SGWVTDRRTAVDLRGREVEVLGEVPAAGGSPLRQYFFETRCKADNAE EGGPGAGGGGCRGVDRRHVWSECKAKQSYVRALTADAQGRVGRWVI RIDTACVCTLLSRTGRA
<b>Host:</b>	Mouse
<b>Reactivity:</b>	Human
<b>Isotype:</b>	IgG2a Kappa
<b>Quality Control Testing:</b>	Antibody Reactive Against Recombinant Protein.
<b>Storage Buffer:</b>	In 1x PBS, pH 7.4
<b>Storage Instruction:</b>	Store at -20°C or lower. Aliquot to avoid repeated freezing and thawing.
<b>MSDS:</b>	 <a href="#">Download</a>
<b>Datasheet:</b>	 <a href="#">Download</a>

### Applications

#### Sandwich ELISA (Recombinant protein)



Detection limit for recombinant GST tagged NTF4 is 1 ng/ml as a capture antibody.

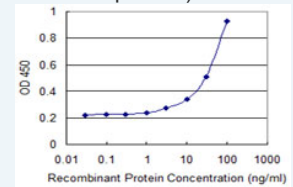
 [Protocol Download](#)


#### ELISA

#### In situ Proximity Ligation Assay (Cell)

### Application Image

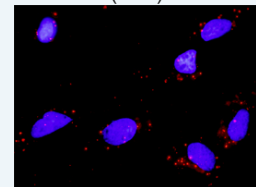
#### Sandwich ELISA (Recombinant protein)



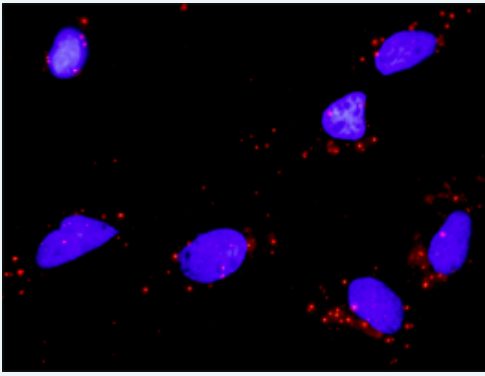
 [enlarge](#)

#### ELISA

#### In situ Proximity Ligation Assay (Cell)



 [enlarge](#)



Proximity Ligation Analysis of protein-protein interactions between BDNF and NTF4. HeLa cells were stained with anti-BDNF rabbit purified polyclonal 1:1200 and anti-NTF4 mouse monoclonal antibody 1:50. Each red dot represents the detection of protein-protein interaction complex, and nuclei were counterstained with DAPI (blue).

---

### Gene Information

---

**Entrez GeneID:** [4909](#)

**GeneBank Accession#:** [BC012421](#)

**Protein Accession#:** [AAH12421](#)

**Gene Name:** NTF4

**Gene Alias:** NT-4/5,NT4,NT5,NTF5

**Gene Description:** neurotrophin 4

**Omim ID:** [162662](#)

**Gene Ontology:** [Hyperlink](#)

**Gene Summary:** This gene is a member of a family of neurotrophic factors, neurotrophins, that control survival and differentiation of mammalian neurons. The expression of this gene is ubiquitous and less influenced by environmental signals. While knock-outs of other neurotrophins including nerve growth factor, brain-derived neurotrophic factor, and neurotrophin 3 prove lethal during early postnatal development, NTF5-deficient mice only show minor cellular deficits and develop normally to adulthood. [provided by RefSeq]

**Other Designations:** neurotrophic factor 4,neurotrophic factor 5,neurotrophin 5,neurotrophin 5 (neurotrophin 4/5)

---

### Gene Pathway

---

[MAPK signaling pathway](#) [Neurotrophin signaling pathway](#)

---

### Related Disease

---

[Asperger Syndrome](#) [Attention Deficit Disorder with Hyperactivity](#) [Autistic Disorder](#) [Disease Models, Animal](#) [Eating Disorders](#) [Genetic Predisposition to Disease](#) [Glaucoma, Angle-Closure](#) [Glaucoma, Open-Angle](#) [Mental Disorders](#) [Social Perception](#)