



SZABO SCANDIC

Part of Europa Biosite

Produktinformation



Forschungsprodukte & Biochemikalien



Zellkultur & Verbrauchsmaterial



Diagnostik & molekulare Diagnostik



Laborgeräte & Service

Weitere Information auf den folgenden Seiten!
See the following pages for more information!



Lieferung & Zahlungsart

siehe unsere [Liefer- und Versandbedingungen](#)

Zuschläge

- Mindermengenzuschlag
- Trockeneiszuschlag
- Gefahrgutzuschlag
- Expressversand

SZABO-SCANDIC HandelsgmbH

Quellenstraße 110, A-1100 Wien

T. +43(0)1 489 3961-0

F. +43(0)1 489 3961-7

mail@szabo-scandic.com

www.szabo-scandic.com

[linkedin.com/company/szaboscandic](https://www.linkedin.com/company/szaboscandic) 

NTRK2 monoclonal antibody (M01), clone 4D3-F10

Catalog # : H00004915-M01

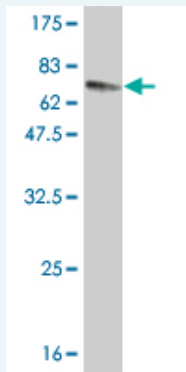
規格 : [100 ug]

[List All](#)

Specification

Product Description:	Mouse monoclonal antibody raised against a full length recombinant NTRK2.
Immunogen:	NTRK2 (AAH31835, 1 a.a. ~ 477 a.a) full-length recombinant protein with GST tag. MW of the GST tag alone is 26 KDa.
Sequence:	MSSWIRWHGPAMARLWGF CWLWGFWRAAFACPT SCKCSASRIWCSD PSPGVAFPRLEPNSVDPENITEIFIANQKRLEIINEDDVEAYVGLRNLTMDS GLKFVAHKAF LKNSNLQHINFRNKLTSLSRKHFRHLDLSELILVGNPFTC SCDIMWIKTLQEAKSSPDTQDLYCLNESSKNIPLANLQIPNCGLPSANLAA PNLTVVEEGKSITLSCSVAGDPVPMYWDVGNLVSKHMNETSHTQGSLRI TNISSDDSGKQISCVAENLVGEDQDSVNLTVHFAPTITFLESPTSDHHWCI PFTVKGNPKPALQWFYNGAILNESKYICTKIHVTNHTEYHGCLQLDNPTH MNNGDYTLIAKNEYGKDEKQISAHFMGWPGIDDGANPNYPDVIYEDYGTA ANDIGDTTNRSNEIPSTDVTDKTGREHLSVYAVVVIASVVGFCLLVMLFLL KLARHSKFGMKGFVLFHKIPLDG
Host:	Mouse
Reactivity:	Human
Isotype:	IgG2a Kappa

Quality Control Testing: Antibody Reactive Against Recombinant Protein.



Western Blot detection against Immunogen (78.21 KDa) .

Storage Buffer: In 1x PBS, pH 7.4

Storage Instruction: Store at -20°C or lower. Aliquot to avoid repeated freezing and thawing.

MSDS: [Download](#)

Datasheet: [Download](#)

Publication Reference

1. [Peptide-mediated targeting of liposomes to TrkB receptor-expressing cells.](#)
Ranjan S, Sood R, Dudas J, Glueckert R, Schrott-Fischer A, Roy S, Pyykko I, Kinnunen PK. *Int J Nanomedicine*. 2012;7:3475-85. Epub 2012 Jul 6.

2. [Hypoxia-inducible Factor-1 \(HIF-1\) Is a Transcriptional Activator of the TrkB Neurotrophin Receptor Gene.](#)
Martens LK, Kirschner KM, Warnecke C, Scholz H.J Biol Chem. 2007 May 11;282(19):14379-88. Epub 2007 Mar 20.

Applications

Western Blot (Recombinant protein)

 [Protocol Download](#)

Sandwich ELISA (Recombinant protein)

Detection limit for recombinant GST tagged NTRK2 is approximately 3ng/ml as a capture antibody.

 [Protocol Download](#)

ELISA

Gene Information

Entrez GeneID: [4915](#)

GeneBank [BC031835](#)
Accession#:

Protein [AAH31835](#)
Accession#:

Gene Name: NTRK2

Gene Alias: GP145-TrkB,TRKB

Gene Description: neurotrophic tyrosine kinase, receptor, type 2

Omim ID: [600456](#)

Gene Ontology: [Hyperlink](#)

Gene Summary: This gene encodes a member of the neurotrophic tyrosine receptor kinase (NTRK) family. This kinase is a membrane-bound receptor that, upon neurotrophin binding, phosphorylates itself and members of the MAPK pathway. Signalling through this kinase leads to cell differentiation. Mutations in this gene have been associated with obesity and mood disorders. Alternate transcriptional splice variants encoding different isoforms have been found for this gene. [provided by RefSeq]

Other Designations: BDNF/NT-3 growth factors receptor, OTTHUMP00000021573, OTTHUMP00000021574, OTTHUMP00000021575, OTTHUMP00000021576, OTTHUMP00000021577, tyrosine kinase receptor B

Gene Pathway

[MAPK signaling pathway](#) [Neurotrophin signaling pathway](#)

Related Disease

[Alcoholism](#) [Alzheimer Disease](#) [Alzheimer disease](#) [Anorexia Nervosa](#)
[Antisocial Personality Disorder](#) [Asperger Syndrome](#)
[Attention Deficit Disorder with Hyperactivity](#) [Autistic Disorder](#) [Avoidance Learning](#)
[Bipolar Disorder](#) [Bulimia](#) [Cardiovascular Diseases](#) [Cognition](#) [Depressive Disorder](#)
[Depressive Disorder, Major](#) [Diabetes Mellitus, Type 2](#) [Disease Models, Animal](#)
[Eating Disorders](#) [Edema](#)

... see more

