



SZABO SCANDIC

Part of Europa Biosite

Produktinformation



Forschungsprodukte & Biochemikalien



Zellkultur & Verbrauchsmaterial



Diagnostik & molekulare Diagnostik



Laborgeräte & Service

Weitere Information auf den folgenden Seiten!
See the following pages for more information!



Lieferung & Zahlungsart

siehe unsere [Liefer- und Versandbedingungen](#)

Zuschläge

- Mindermengenzuschlag
- Trockeneiszuschlag
- Gefahrgutzuschlag
- Expressversand

SZABO-SCANDIC HandelsgmbH

Quellenstraße 110, A-1100 Wien

T. +43(0)1 489 3961-0

F. +43(0)1 489 3961-7

mail@szabo-scandic.com

www.szabo-scandic.com

[linkedin.com/company/szaboscandic](https://www.linkedin.com/company/szaboscandic) 

ROR2 monoclonal antibody (M01), clone 4E1

Catalog # : H00004920-M01

規格 : [100 ug]

[List All](#)

Specification

Product Description: Mouse monoclonal antibody raised against a partial recombinant ROR2.

Immunogen: ROR2 (NP_004551, 34 a.a. ~ 143 a.a) partial recombinant protein with GST tag. MW of the GST tag alone is 26 KDa.

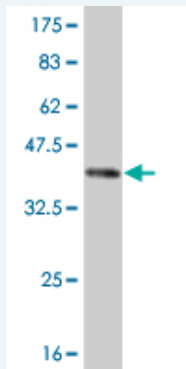
Sequence: EVEVLDPNPLGPLDGDGPIPTLKGYFLNFLEPVNNITVQGQTAILHCK
VAGNPPPNVRLKNDAPVVQEPRRIIRKTEYGSRLRIQDLDTTDTGYEQ
CVATNGMKT

Host: Mouse

Reactivity: Human

Isotype: IgG2a Kappa

Quality Control Testing: Antibody Reactive Against Recombinant Protein.



Western Blot detection against Immunogen (37.84 KDa) .

Storage Buffer: In 1x PBS, pH 7.4

Storage Instruction: Store at -20°C or lower. Aliquot to avoid repeated freezing and thawing.

MSDS: [Download](#)

Datasheet: [Download](#)

Applications

Western Blot (Recombinant protein)

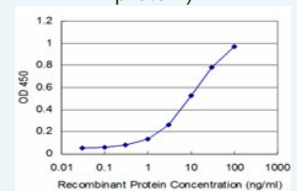
[Protocol Download](#)

Sandwich ELISA (Recombinant protein)

Application Image

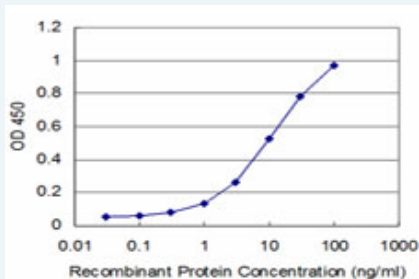
Western Blot (Recombinant protein)

Sandwich ELISA (Recombinant protein)



[enlarge](#)

ELISA



Detection limit for recombinant GST tagged ROR2 is approximately 1ng/ml as a capture antibody.

 [Protocol Download](#)

ELISA

Gene Information

Entrez GeneID: [4920](#)

GeneBank [NM_004560](#)

Accession#:

Protein [NP_004551](#)

Accession#:

Gene Name: ROR2

Gene Alias: BDB,BDB1,MGC163394,NTRKR2

Gene Description: receptor tyrosine kinase-like orphan receptor 2

Omim ID: [113000](#), [268310](#), [602337](#)

Gene Ontology: [Hyperlink](#)

Gene Summary: The protein encoded by this gene is a receptor protein tyrosine kinase and type I transmembrane protein that belongs to the ROR subfamily of cell surface receptors. The protein may be involved in the early formation of the chondrocytes and may be required for cartilage and growth plate development. Mutations in this gene can cause brachydactyly type B, a skeletal disorder characterized by hypoplasia/aplasia of distal phalanges and nails. In addition, mutations in this gene can cause the autosomal recessive form of Robinow syndrome, which is characterized by skeletal dysplasia with generalized limb bone shortening, segmental defects of the spine, brachydactyly, and a dysmorphic facial appearance. [provided by RefSeq]

Other Designations: OTTHUMP00000021634,OTTHUMP00000063680,neurotrophic tyrosine kinase receptor-related 2,tyrosine-protein kinase transmembrane receptor ROR2

Related Disease

[Cerebral Hemorrhage](#) [Chronic Disease](#) [Cleft Lip](#) [Cleft Palate](#)
[Genetic Predisposition to Disease](#) [Hypertension](#) [Intracranial Hemorrhages](#)
[Kidney Diseases](#) [Stroke](#) [Subarachnoid Hemorrhage](#)