



# SZABO SCANDIC

Part of Europa Biosite

## Produktinformation



Forschungsprodukte & Biochemikalien



Zellkultur & Verbrauchsmaterial



Diagnostik & molekulare Diagnostik



Laborgeräte & Service

Weitere Information auf den folgenden Seiten!  
See the following pages for more information!



### Lieferung & Zahlungsart

siehe unsere [Liefer- und Versandbedingungen](#)

### Zuschläge

- Mindermengenzuschlag
- Trockeneiszuschlag
- Gefahrgutzuschlag
- Expressversand

### SZABO-SCANDIC HandelsgmbH

Quellenstraße 110, A-1100 Wien

T. +43(0)1 489 3961-0

F. +43(0)1 489 3961-7

[mail@szabo-scandic.com](mailto:mail@szabo-scandic.com)

[www.szabo-scandic.com](http://www.szabo-scandic.com)

[linkedin.com/company/szaboscandic](https://www.linkedin.com/company/szaboscandic) 

## ROR2 monoclonal antibody (M04), clone 4B8

Catalog # : H00004920-M04

規格 : [ 100 ug ]

[List All](#)

### Specification

**Product Description:** Mouse monoclonal antibody raised against a partial recombinant ROR2.

**Immunogen:** ROR2 (NP\_004551, 34 a.a. ~ 143 a.a) partial recombinant protein with GST tag. MW of the GST tag alone is 26 KDa.

**Sequence:** EVEVLDPNPLGPLDGGQDGIPTLKGYFLNFLEPVNITVQGQTAILHCK VAGNPPPN/RWLKNDAPVVQEPRRIIRKTEYGSRLRIQDLDTTDTGYQ CVATNGMKT

**Host:** Mouse

**Reactivity:** Human

**Isotype:** IgG2b Kappa

**Quality Control Testing:** Antibody Reactive Against Recombinant Protein.

**Storage Buffer:** In 1x PBS, pH 7.4

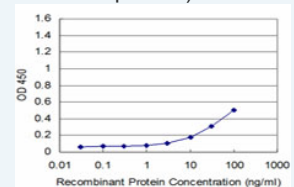
**Storage Instruction:** Store at -20°C or lower. Aliquot to avoid repeated freezing and thawing.


**MSDS:**  [Download](#)

**Datasheet:**  [Download](#)

### Application Image

Sandwich ELISA (Recombinant protein)

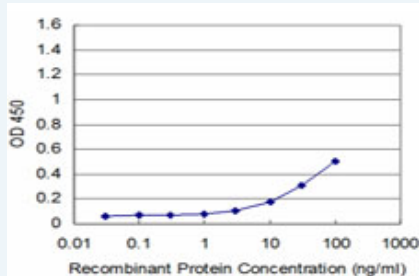


 [enlarge](#)


ELISA

### Applications

Sandwich ELISA (Recombinant protein)



Detection limit for recombinant GST tagged ROR2 is approximately 3ng/ml as a capture antibody.

 [Protocol Download](#)

ELISA

### Gene Information

**Entrez GeneID:** [4920](#)

**GeneBank** [NM\\_004560](#)

**Accession#:****Protein** [NP\\_004551](#)**Accession#:****Gene Name:** ROR2**Gene Alias:** BDB,BDB1,MGC163394,NTRKR2**Gene Description:** receptor tyrosine kinase-like orphan receptor 2**Omim ID:** [113000](#), [268310](#), [602337](#)**Gene Ontology:** [Hyperlink](#)

**Gene Summary:** The protein encoded by this gene is a receptor protein tyrosine kinase and type I transmembrane protein that belongs to the ROR subfamily of cell surface receptors. The protein may be involved in the early formation of the chondrocytes and may be required for cartilage and growth plate development. Mutations in this gene can cause brachydactyly type B, a skeletal disorder characterized by hypoplasia/aplasia of distal phalanges and nails. In addition, mutations in this gene can cause the autosomal recessive form of Robinow syndrome, which is characterized by skeletal dysplasia with generalized limb bone shortening, segmental defects of the spine, brachydactyly, and a dysmorphic facial appearance. [provided by RefSeq]

**Other Designations:** OTTHUMP00000021634,OTTHUMP00000063680,neurotrophic tyrosine kinase receptor-related 2,tyrosine-protein kinase transmembrane receptor ROR2

**Related Disease**

[Cerebral Hemorrhage](#) [Chronic Disease](#) [Cleft Lip](#) [Cleft Palate](#)  
[Genetic Predisposition to Disease](#) [Hypertension](#) [Intracranial Hemorrhages](#)  
[Kidney Diseases](#) [Stroke](#) [Subarachnoid Hemorrhage](#)

[服務條款](#) | [隱私權政策](#) | [著作及商標](#) | [網站地圖](#)

©2016 亞諾法生技股份有限公司 Abnova Corporation. 版權所有.