



# SZABO SCANDIC

Part of Europa Biosite

## Produktinformation



Forschungsprodukte & Biochemikalien



Zellkultur & Verbrauchsmaterial



Diagnostik & molekulare Diagnostik



Laborgeräte & Service

Weitere Information auf den folgenden Seiten!  
See the following pages for more information!



### Lieferung & Zahlungsart

siehe unsere [Liefer- und Versandbedingungen](#)

### Zuschläge

- Mindermengenzuschlag
- Trockeneiszuschlag
- Gefahrgutzuschlag
- Expressversand

### SZABO-SCANDIC HandelsgmbH

Quellenstraße 110, A-1100 Wien

T. +43(0)1 489 3961-0

F. +43(0)1 489 3961-7

[mail@szabo-scandic.com](mailto:mail@szabo-scandic.com)

[www.szabo-scandic.com](http://www.szabo-scandic.com)

[linkedin.com/company/szaboscandic](https://www.linkedin.com/company/szaboscandic) 

## NUCB1 purified MaxPab rabbit polyclonal antibody (D01P) MaxPab®

Catalog # : H00004924-D01P

規格 : [ 100 ug ]

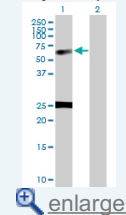
[List All](#)

### Specification

<b>Product Description:</b>	Rabbit polyclonal antibody raised against a full-length human NUCB1 protein.
<b>Immunogen:</b>	NUCB1 (NP_006175.2, 1 a.a. ~ 461 a.a) full-length human protein.
<b>Sequence:</b>	MPPSGPRGTL L L L L L L L L L L R A V L A V P L E R G A P N K E E T P A T E S P D T G L Y Y H R Y L Q E V I D V L E T D G H F R E K L Q A A N A E D I K S G K L S R E L D F V S H H V R T K L D E L K R Q E V S R L R M L L K A K M D A E Q D P N V Q V D H L N L L K Q F E H L D P Q N Q H T F E A R D L E L L I Q T A T R D L A Q Y D A A H H E E F K R Y E M L K E H E R R R Y L E S L G E E Q R K E A E R K L E E Q Q R R H R E H P K V N V P G S Q A Q L K E V W E E L D G L D P N R F N P K T F F I L H D I N S D G V L D E Q E L E A L F T K E L E K V Y D P K N E E D M R E M E E E R L R M R E H V M K N V D T N Q D R L V T L E E F L A S T Q R K E F G D T G E G W E T V E M H P A Y T E E L R R F E E E L A A R E A E L N A K A Q R L S Q E T E A L G R S Q G R L E A Q K R E L Q Q A V L H M E Q R K Q Q Q Q Q G H K A P A A H P E G Q L K F H P D T D D V P V P A P A G D Q K E V D T S E K L L L E R L P E V E P Q H L
<b>Host:</b>	Rabbit
<b>Reactivity:</b>	Human
<b>Quality Control Testing:</b>	Antibody reactive against mammalian transfected lysate.
<b>Storage Buffer:</b>	In 1x PBS, pH 7.4
<b>Storage Instruction:</b>	Store at -20°C or lower. Aliquot to avoid repeated freezing and thawing.
<b>MSDS:</b>	<a href="#">Download</a>
<b>Datasheet:</b>	<a href="#">Download</a>

### Application Image

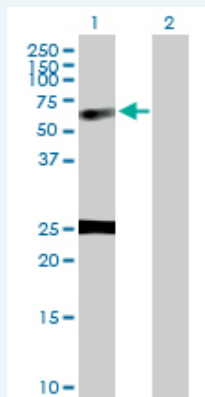
Western Blot (Transfected lysate)



[enlarge](#)

### Applications

#### Western Blot (Transfected lysate)



Western Blot analysis of NUCB1 expression in transfected 293T cell line ([H00004924-T01](#)) by NUCB1 MaxPab polyclonal antibody.

Lane 1: NUCB1 transfected lysate(53.90 KDa).  
Lane 2: Non-transfected lysate.

**Gene Information**

---

**Entrez GeneID:** [4924](#)

---

**GeneBank  
Accession#:** [NM\\_006184.3](#)

---

**Protein  
Accession#:** [NP\\_006175.2](#)

---

**Gene Name:** NUCB1

---

**Gene Alias:** DKFZp686A15286,FLJ40471,NUC

---

**Gene  
Description:** nucleobindin 1

---

**Omim ID:** [601323](#)

---

**Gene Ontology:** [Hyperlink](#)

---

**Other  
Designations:** -

---