



SZABO SCANDIC

Part of Europa Biosite

Produktinformation



Forschungsprodukte & Biochemikalien



Zellkultur & Verbrauchsmaterial



Diagnostik & molekulare Diagnostik



Laborgeräte & Service

Weitere Information auf den folgenden Seiten!
See the following pages for more information!



Lieferung & Zahlungsart

siehe unsere [Liefer- und Versandbedingungen](#)

Zuschläge

- Mindermengenzuschlag
- Trockeneiszuschlag
- Gefahrgutzuschlag
- Expressversand

SZABO-SCANDIC HandelsgmbH

Quellenstraße 110, A-1100 Wien

T. +43(0)1 489 3961-0

F. +43(0)1 489 3961-7

mail@szabo-scandic.com

www.szabo-scandic.com

[linkedin.com/company/szaboscandic](https://www.linkedin.com/company/szaboscandic) 

NUCB1 monoclonal antibody (M01), clone 1H8-2C11

Catalog # : H00004924-M01

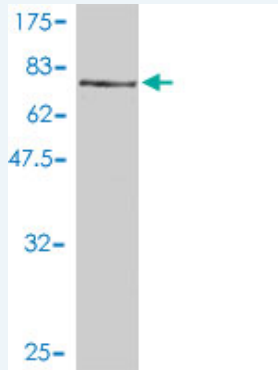
規格 : [100 ug]

[List All](#)

Specification

Product Description:	Mouse monoclonal antibody raised against a full length recombinant NUCB1.
Immunogen:	NUCB1 (AAH02356, 28 a.a. ~ 461 a.a) full-length recombinant protein with GST tag. MW of the GST tag alone is 26 KDa.
Sequence:	PLERGAPNKEETPATESPDTGLYYHRYLQEVIDVLETDGHFREKLQAAN AEDIKSGKLSRELDVSHVVRTKLELERQEVSRPRMLLKAKMDAEQDP NVQVDHLNLLKQFEHLDPQNQHTFEARDLELLIQATRDLAQYDAAHHE EFKRYEMLKEHERRRYLES LGEEQRKEAERKLEEQRRRHREHPKVNP GSQAQLKEVWEELDGLDPNRFNPKTFFILHDINSDGVLDEQEALFTKE LEKVPDPKNEEDDMREMEERLRMREHVMKNVDTNQDRLVTLEEFAS TQRKEFGDTGEGWETVEMHPAYTEEELRRFEELAAREAELNAKAQRL SQETEALGRSQGRLEAQKRELQQAVLHMEQRKQQQQQQGHKAPAA HPEGQLKFHPDTPDDVPVPAPAGDQKEVDTSEKLLERLPEVEVPQHL
Host:	Mouse
Reactivity:	Human
Isotype:	IgG1 kappa

Quality Control Testing: Antibody Reactive Against Recombinant Protein.



Western Blot detection against Immunogen (73.48 KDa) .

Storage Buffer: In 1x PBS, pH 7.4

Storage Instruction: Store at -20°C or lower. Aliquot to avoid repeated freezing and thawing.

MSDS: [Download](#)

Datasheet: [Download](#)

Applications

Western Blot (Cell lysate)

Application Image

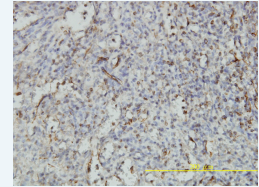
Western Blot (Cell lysate)



[enlarge](#)

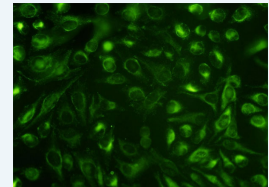
Western Blot (Recombinant protein)

Immunohistochemistry
(Formalin/PFA-fixed paraffin-embedded sections)



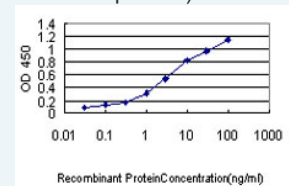
[enlarge](#)

Immunofluorescence



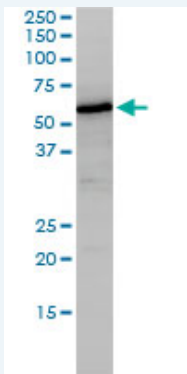
[enlarge](#)

Sandwich ELISA (Recombinant protein)



[enlarge](#)

ELISA



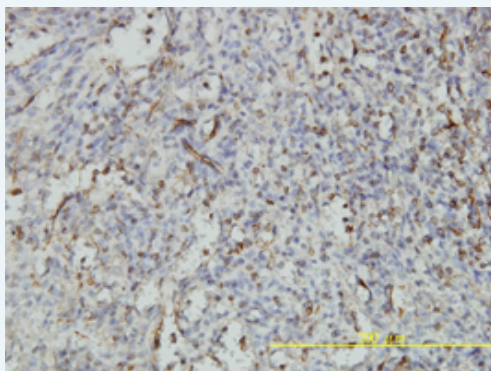
NUCB1 monoclonal antibody (M01), clone 1H8-2C11 Western Blot analysis of NUCB1 expression in HepG2 (Cat # L019V1).

[Protocol Download](#)

Western Blot (Recombinant protein)

[Protocol Download](#)

Immunohistochemistry (Formalin/PFA-fixed paraffin-embedded sections)

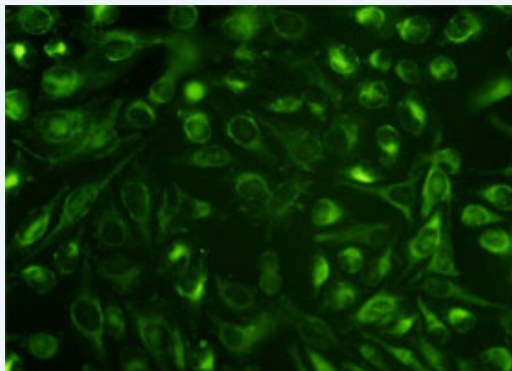


[enlarge this image](#)

Immunoperoxidase of monoclonal antibody to NUCB1 on formalin-fixed paraffin-embedded human spleen tissue. [antibody concentration 3 ug/ml]

[Protocol Download](#)

Immunofluorescence

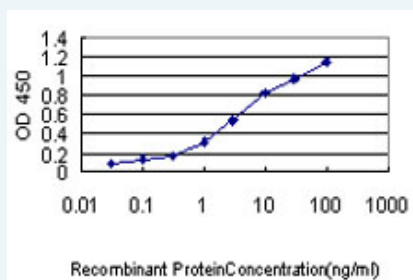


[enlarge this image](#)

Immunofluorescence of monoclonal antibody to NUCB1 on HeLa cell. [antibody concentration 10 ug/ml]

[Protocol Download](#)

Sandwich ELISA (Recombinant protein)



Detection limit for recombinant GST tagged NUCB1 is approximately 0.1ng/ml as a capture antibody.

ELISA

Gene Information

Entrez GeneID: [4924](#)

GeneBank Accession#: [BC002356](#)

Protein Accession#: [AAH02356](#)

Gene Name: NUCB1

Gene Alias: DKFZp686A15286,FLJ40471,NUC

Gene Description: nucleobindin 1

Omim ID: [601323](#)

Gene Ontology: [Hyperlink](#)

Other Designations: -