



SZABO SCANDIC

Part of Europa Biosite

Produktinformation



Forschungsprodukte & Biochemikalien



Zellkultur & Verbrauchsmaterial



Diagnostik & molekulare Diagnostik



Laborgeräte & Service

Weitere Information auf den folgenden Seiten!
See the following pages for more information!



Lieferung & Zahlungsart

siehe unsere [Liefer- und Versandbedingungen](#)

Zuschläge

- Mindermengenzuschlag
- Trockeneiszuschlag
- Gefahrgutzuschlag
- Expressversand

SZABO-SCANDIC HandelsgmbH

Quellenstraße 110, A-1100 Wien

T. +43(0)1 489 3961-0

F. +43(0)1 489 3961-7

mail@szabo-scandic.com

www.szabo-scandic.com

[linkedin.com/company/szaboscandic](https://www.linkedin.com/company/szaboscandic) 

NUMA1 purified MaxPab mouse polyclonal antibody (B01P) MaxPab®

Catalog # : H00004926-B01P

規格 : [50 ug]

[List All](#)

Specification

Product Description: Mouse polyclonal antibody raised against a full-length human NUMA1 protein.

Immunogen: NUMA1 (AAH13023.1, 1 a.a. ~ 1193 a.a) full-length human protein.

Sequence:
 MAATSKEVARLETLVKAGEQQETASRELVKEPARAGDRQPEWLEEQ
 QGRQFCSTQAALQAMEREAEQMGNELERLRAALMESGQQQEERGQ
 QEREVARLTQERGRAQADLLEKAARAELEMRLQNALNEQRVEFATLQ
 EALAHALTEKEGKDQELAKLRGLEAAQIKLEELRQTVKQLKEQLAKKEK
 EHASGSGAQSEAAGRTEPTGPKLEALRAEVSKLEQQCQKQEQEQADSLE
 RSLEAERASRAERDSALETLQGQLEEKAEQELGHSQSALASAQRELAAF
 RTKVQDHSKAEDWKAQVARGRQEAERKNSLISSLEEEVSILNRQVLEK
 EGESKELKRLVMAESEKSKLEERLRLQAEASNSARAAERSSALREE
 VQSLREEAEKQRVASENLRQELTSQAERAEEELGQELKAWQEKFFQKEQ
 ALSTLQLEHTSTQALVSELLPAKHLCCQLQAEQAAAERHREELEQSKQ
 AAGALRAELLRAQRELGELIPLRQKVAEQERTAQQLRAEKASYAEQLSM
 LKKAHGLLAEENRGLGERANLGRQFLEVELDQAREKYVQELAAVRADAE
 TRLAEVQREAQSTARELEVMTAKYEGAKVKVLEERQRFQEERQKLT AQ
 VEELSKKLADSDQASKVQQQKLKAVQAQGGESQQEAQRLQAQLNELQ
 AQLSQKEQAAEHYKLQMEKAKTHYDAKKQQNQELQEQLRSLEQLQKEN
 KELRAEAERLGHELQQAGLKTKEAEQTCRHLTAQVRSLEAQVAHADQQ
 LRDLDGKFQVATDALKSREPQAKPQLDLSIDSLDLSCEEGTPLSITSKLPR
 TQPDGTSVPGEPASPISQRLPPKVESLESLYFTPIPARSQAPLESSLDSL
 GDVFLDSGRKTRSARRRTTQIINITMTKKLDVEEPDSANSSFYSTRSAPA
 SQASLRATSSTQSLARLGGSPDYGNSALLSLPGYRPTTRSSARRSQAGV
 SSGAPPGRNSFYMGTCQDEPEQLDDWNRIAEQQQRNVCPPHLKTCYP
 LESRPSLSLGTITDEEMKTGDPQETLRRASMQPIQIAEGTGITTRQQRKR
 VSLEPHQGPPTPESKKATSCFPRPMTPRDRHEGRKQSTTEAQKKAAPA
 STKQADRRQSMASFILNTPKKLGNLLRRGASKKALSKASPNTRSRGTTR
 SPRIATTTASAATAAIGATPRAKGKAKH


Host: Mouse

Reactivity: Human

Quality Control Testing: Antibody reactive against mammalian transfected lysate.

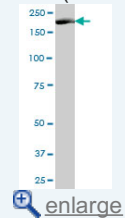
Storage Buffer: In 1x PBS, pH 7.4

Storage Instruction: Store at -20°C or lower. Aliquot to avoid repeated freezing and thawing.

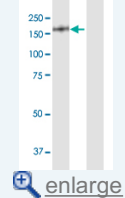
Datasheet:  [Download](#)

Application Image

Western Blot (Tissue lysate)



Western Blot (Transfected lysate)

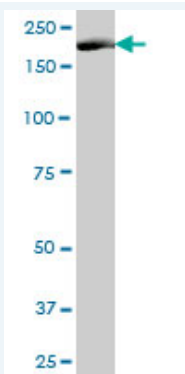


Immunofluorescence



Applications

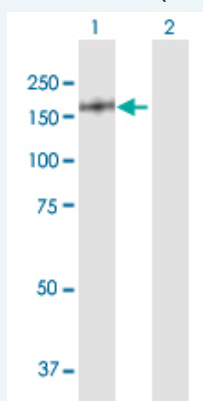
Western Blot (Tissue lysate)



NUMA1 MaxPab polyclonal antibody. Western Blot analysis of NUMA1 expression in human stomach.

[Protocol Download](#)

Western Blot (Transfected lysate)

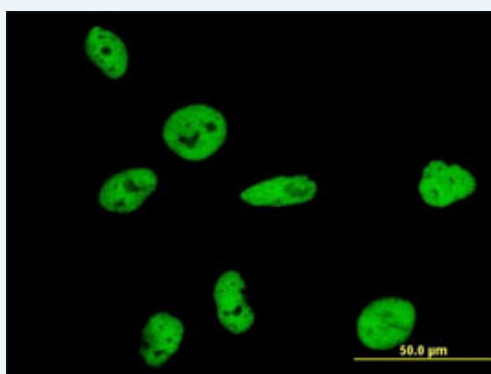


Western Blot analysis of NUMA1 expression in transfected 293T cell line ([H00004926-T01](#)) by NUMA1 MaxPab polyclonal antibody.

Lane 1: NUMA1 transfected lysate(131.23 KDa).
Lane 2: Non-transfected lysate.

[Protocol Download](#)

Immunofluorescence



[enlarge this image](#)

Immunofluorescence of purified MaxPab antibody to NUMA1 on HeLa cell. [antibody concentration 10 ug/ml]

[Protocol Download](#)

Gene Information

Entrez GeneID: [4926](#)

GeneBank [BC013023.2](#)
Accession#:

Protein [AAH13023.1](#)
Accession#:

Gene Name: NUMA1

Gene Alias: NUMA

Gene Description: nuclear mitotic apparatus protein 1

Omim ID: [164009](#)

Gene Ontology: [Hyperlink](#)

Other Designations: centrophilin stabilizes mitotic spindle in mitotic cells, structural nuclear protein

Related Disease

[Breast cancer](#) [Breast Neoplasms](#) [Genetic Predisposition to Disease](#) [Tobacco Use Disorder](#)

[服務條款](#) | [隱私權政策](#) | [著作及商標](#) | [網站地圖](#)

©2016 亞諾法生技股份有限公司 Abnova Corporation. 版權所有.