



SZABO SCANDIC

Part of Europa Biosite

Produktinformation



Forschungsprodukte & Biochemikalien



Zellkultur & Verbrauchsmaterial



Diagnostik & molekulare Diagnostik



Laborgeräte & Service

Weitere Information auf den folgenden Seiten!
See the following pages for more information!



Lieferung & Zahlungsart

siehe unsere [Liefer- und Versandbedingungen](#)

Zuschläge

- Mindermengenzuschlag
- Trockeneiszuschlag
- Gefahrgutzuschlag
- Expressversand

SZABO-SCANDIC HandelsgmbH

Quellenstraße 110, A-1100 Wien

T. +43(0)1 489 3961-0

F. +43(0)1 489 3961-7

mail@szabo-scandic.com

www.szabo-scandic.com

[linkedin.com/company/szaboscandic](https://www.linkedin.com/company/szaboscandic) 

GPR143 purified MaxPab mouse polyclonal antibody (B01P) MaxPab®

Catalog # : H00004935-B01P

規格 : [50 ug]

[List All](#)

Specification

Product Description: Mouse polyclonal antibody raised against a full-length human GPR143 protein.

Immunogen: GPR143 (NP_000264.1, 1 a.a. ~ 424 a.a) full-length human protein.

Sequence:
 MTQAGRRGPGTPEPRPRTQPMASPRLGTFCCPTRDAATQLVLSFQPR
 AFHALCLGSGGLRLALGLLQLLPGRPPAGPGSPATSPASVRILRAAAA
 CDLLGCLGMVIRSTVWLGFPNFVDSVSDMNHTEIWPAAFCVGSAMWIQL
 LYSACFWLFCYAVDAYLVIRRSAGLSTILLYHIMAWGLATLLCVEGAAM
 LYPSVSRRCERGLDHAIPHYVTMYLPLLLVLVANPILFQKTVTAVASLLKG
 RQGIYTENERRMGAVIKIRFFKIMLVLIICWLSNIINESLLFYLEMQTDINGGS
 LKPVRTAAKTTFWIMGILNPAQGFLLSLAFYGWTGCSLGFQSPRKEIQW
 ESLTTSAAEGAHPSPLMPHENPASGKVSQVGGQTSEALSMLEGSDA
 STIEHTASESCNKNEGDPALPTHGDL

Host: Mouse

Reactivity: Human

Quality Control Testing: Antibody reactive against mammalian transfected lysate.

Storage Buffer: In 1x PBS, pH 7.4

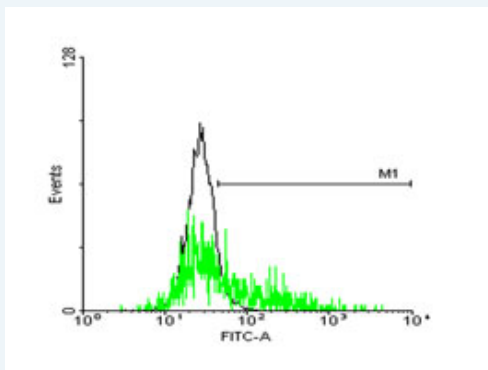
Storage Instruction: Store at -20°C or lower. Aliquot to avoid repeated freezing and thawing.

MSDS: [Download](#)

Datasheet: [Download](#)

Applications

Flow Cytometry



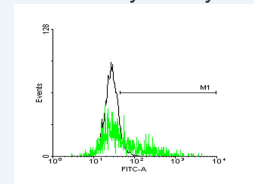
[enlarge this image](#)

FACS analysis of negative control 293 cells (Black) and GPR143 expressing 293 cells (Green) using GPR143 purified MaxPab mouse polyclonal antibody.

Western Blot (Transfected lysate)

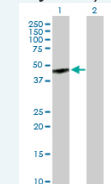
Application Image

Flow Cytometry

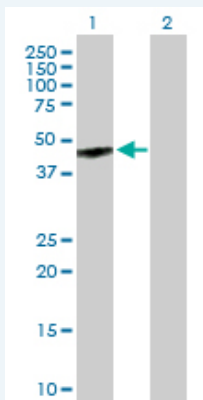


[enlarge](#)

Western Blot (Transfected lysate)



[enlarge](#)



Western Blot analysis of GPR143 expression in transfected 293T cell line ([H00004935-T01](#)) by GPR143 MaxPab polyclonal antibody.

Lane 1: GPR143 transfected lysate(46.64 KDa).
Lane 2: Non-transfected lysate.

 [Protocol Download](#)

Gene Information

Entrez GeneID: [4935](#)

GeneBank Accession#: [NM_000273](#)

Protein Accession#: [NP_000264.1](#)

Gene Name: GPR143

Gene Alias: OA1

Gene Description: G protein-coupled receptor 143

Omim ID: [300500](#)

Gene Ontology: [Hyperlink](#)

Gene Summary: Ocular albinism type 1 protein is a conserved integral membrane protein with seven transmembrane domains. It is expressed in the eye and epidermal melanocytes. [provided by RefSeq]

Other Designations: OTTHUMP00000022884,ocular albinism 1 (Nettleship-Falls),ocular albinism-1, Nettleship-Falls type