



SZABO SCANDIC

Part of Europa Biosite

Produktinformation



Forschungsprodukte & Biochemikalien



Zellkultur & Verbrauchsmaterial



Diagnostik & molekulare Diagnostik



Laborgeräte & Service

Weitere Information auf den folgenden Seiten!
See the following pages for more information!



Lieferung & Zahlungsart

siehe unsere [Liefer- und Versandbedingungen](#)

Zuschläge

- Mindermengenzuschlag
- Trockeneiszuschlag
- Gefahrgutzuschlag
- Expressversand

SZABO-SCANDIC HandelsgmbH

Quellenstraße 110, A-1100 Wien

T. +43(0)1 489 3961-0

F. +43(0)1 489 3961-7

mail@szabo-scandic.com

www.szabo-scandic.com

[linkedin.com/company/szaboscandic](https://www.linkedin.com/company/szaboscandic) 

OCLN polyclonal antibody (A01)

Catalog # : H00004950-A01

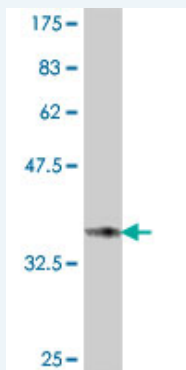
規格 : [50 uL]

List All

Specification

| | |
|-----------------------------|--|
| Product Description: | Mouse polyclonal antibody raised against a partial recombinant OCLN. |
| Immunogen: | OCLN (NP_002529, 423 a.a. ~ 522 a.a) partial recombinant protein with GST tag. |
| Sequence: | ITSDQQRQLYKRNFD TGLQEYKSLQSELDEINKELSRDKELDDYREESE EYMAAADEYNRLKQVKGSADYKSKKNHCKQLKSKLSHIKMMVGDYDRQK T |
| Host: | Mouse |
| Reactivity: | Human |

Quality Control Testing: Antibody Reactive Against Recombinant Protein.



Western Blot detection against Immunogen (37.11 kDa) .

Storage Buffer: 50 % glycerol

Storage Instruction: Store at -20°C or lower. Aliquot to avoid repeated freezing and thawing.

MSDS: [Download](#)

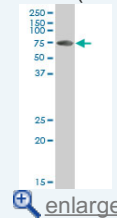
Datasheet: [Download](#)

Applications

Western Blot (Cell lysate)

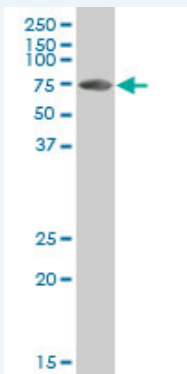
Application Image

Western Blot (Cell lysate)



Western Blot (Recombinant protein)

ELISA



OCLN polyclonal antibody (A01), Lot # 051207JC01 Western Blot analysis of OCLN expression in Jurkat (Cat # L017V1).

 [Protocol Download](#)

Western Blot (Recombinant protein)

 [Protocol Download](#)

ELISA

Gene Information

Entrez GeneID: [4950](#)

GeneBank Accession#: [NM_002538](#)

Protein Accession#: [NP_002529](#)

Gene Name: OCLN

Gene Alias: -

Gene Description: occludin

Omim ID: [602876](#)

Gene Ontology: [Hyperlink](#)

Gene Summary: This gene encodes an integral membrane protein which is located at tight junctions. This protein may be involved in the formation and maintenance of the tight junction. The possibility of several alternatively spliced products has been suggested but the full nature of these products has not been described. [provided by RefSeq]

Other Designations: tight junction protein occludin TM4 minus

Interactome



Gene Pathway

[Cell adhesion molecules \(CAMs\)](#) [Leukocyte transendothelial migration](#)
[Pathogenic Escherichia coli infection - EHEC](#) [Tight junction](#)

[服務條款](#) | [隱私權政策](#) | [著作及商標](#) | [網站地圖](#)

©2016 亞諾法生技股份有限公司 Abnova Corporation. 版權所有.