



SZABO SCANDIC

Part of Europa Biosite

Produktinformation



Forschungsprodukte & Biochemikalien



Zellkultur & Verbrauchsmaterial



Diagnostik & molekulare Diagnostik



Laborgeräte & Service

Weitere Information auf den folgenden Seiten!
See the following pages for more information!



Lieferung & Zahlungsart

siehe unsere [Liefer- und Versandbedingungen](#)

Zuschläge

- Mindermengenzuschlag
- Trockeneiszuschlag
- Gefahrgutzuschlag
- Expressversand

SZABO-SCANDIC HandelsgmbH

Quellenstraße 110, A-1100 Wien

T. +43(0)1 489 3961-0

F. +43(0)1 489 3961-7

mail@szabo-scandic.com

www.szabo-scandic.com

[linkedin.com/company/szaboscandic](https://www.linkedin.com/company/szaboscandic) 

OCLN purified MaxPab mouse polyclonal antibody (B01P) MaxPab®

Catalog # : H00004950-B01P

規格 : [50 ug]

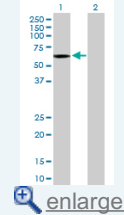
[List All](#)

Specification

Product Description:	Mouse polyclonal antibody raised against a full-length human OCLN protein.
Immunogen:	OCLN (NP_002529.1, 1 a.a. ~ 522 a.a) full-length human protein.
Sequence:	MSSRPLESPPPYRPDEFKPNHYAPSNDIYGGEMHVRPMLSQPAYSFYPE DEILHFYKWTSPPGVIRILSMLIIVMCIAIFACVASTLAWDRGYGTSLGGS VGYPYGGSGFGSYGSGYGYGYGYGGYTDPRAAKGFMLAMAAF CFIAALVIFVTSVIRSEMSRTRRYLSVIIVSAILGIMVFIATIVYIMGVNPTAQ SSGSLYGSQIYALCNQFYTPAATGLYVDQYLYHYCVVDPQEAIAMLGFM IVAFALIIFFAVKTRRKMDRYDKSNILWDKEHIYDEQPPNVEEWVKNVSAG TQDVPSPSDYVERVDSPMAYSSNGKVNDKRFYPESSYKSTPVPEVVQ ELPLTSPVDDFRQPRYSSGGNFETPSKRAPAKGRAGRSKRTEQDHYET DYTTGGESCDELEEDWIREYPPITSDQQRQLYKRNFTDGLQEYKSLQSE LDEINKELSRDKELDDYREESEEYMAAADEYNRLKQVKGSADYKSKKNH CKQLKSKLSHIKMMVGDYDRQKT
Host:	Mouse
Reactivity:	Human
Quality Control Testing:	Antibody reactive against mammalian transfected lysate.
Storage Buffer:	In 1x PBS, pH 7.4
Storage Instruction:	Store at -20°C or lower. Aliquot to avoid repeated freezing and thawing.
MSDS:	Download
Datasheet:	Download

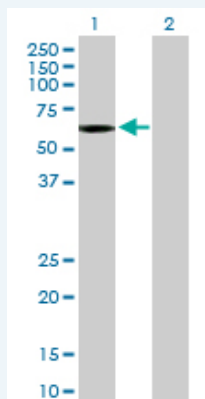
Application Image

Western Blot (Transfected lysate)



Applications

Western Blot (Transfected lysate)



Western Blot analysis of OCLN expression in transfected 293T cell line (H00004950-T01) by OCLN MaxPab polyclonal antibody.

Lane 1: OCLN transfected lysate(57.42 KDa).

Gene Information

Entrez GeneID: [4950](#)

**GeneBank
Accession#:** [NM_002538.2](#)

**Protein
Accession#:** [NP_002529.1](#)

Gene Name: OCLN

Gene Alias: -

**Gene
Description:** occludin

Omim ID: [602876](#)

Gene Ontology: [Hyperlink](#)

Gene Summary: This gene encodes an integral membrane protein which is located at tight junctions. This protein may be involved in the formation and maintenance of the tight junction. The possibility of several alternatively spliced products has been suggested but the full nature of these products has not been described. [provided by RefSeq]

**Other
Designations:** tight junction protein occludin TM4 minus

Interactome



Gene Pathway

[Cell adhesion molecules \(CAMs\) Leukocyte transendothelial migration](#)
[Pathogenic Escherichia coli infection - EHEC Tight junction](#)

