



SZABO SCANDIC

Part of Europa Biosite

Produktinformation



Forschungsprodukte & Biochemikalien



Zellkultur & Verbrauchsmaterial



Diagnostik & molekulare Diagnostik



Laborgeräte & Service

Weitere Information auf den folgenden Seiten!
See the following pages for more information!



Lieferung & Zahlungsart

siehe unsere [Liefer- und Versandbedingungen](#)

Zuschläge

- Mindermengenzuschlag
- Trockeneiszuschlag
- Gefahrgutzuschlag
- Expressversand

SZABO-SCANDIC HandelsgmbH

Quellenstraße 110, A-1100 Wien

T. +43(0)1 489 3961-0

F. +43(0)1 489 3961-7

mail@szabo-scandic.com

www.szabo-scandic.com

[linkedin.com/company/szaboscandic](https://www.linkedin.com/company/szaboscandic) 

OCLN 293T Cell Transient Overexpression Lysate(Denatured)

Catalog # : H00004950-T01

規格 : [100 uL]

List All

Specification

Transfected Cell Line: 293T

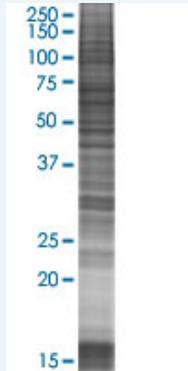
Plasmid: pCMV-OCLN full-length

Host: Human

Theoretical MW (kDa): 59.1

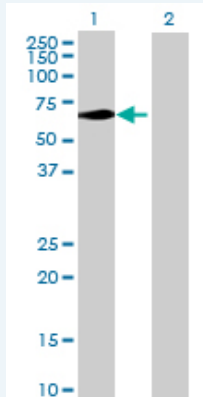
Quality Control Testing: Transient overexpression cell lysate was tested with Anti-OCLN antibody ([H00004950-B01](#)) by Western Blots.

SDS-PAGE Gel



OCLN transfected lysate.

Western Blot



Lane 1: OCLN transfected lysate (59.1 KDa)

Lane 2: Non-transfected lysate.

Storage Buffer: 1X Sample Buffer (50 mM Tris-HCl, 2% SDS, 10% glycerol, 300 mM 2-mercaptoethanol, 0.01% Bromophenol blue)

Storage Instruction: Store at -80°C. Aliquot to avoid repeated freezing and thawing.

MSDS:  [Download](#)

Applications

Western Blot

Gene Information

Entrez GeneID: [4950](#)

GeneBank [NM_002538.2](#)
Accession#:

Protein [NP_002529.1](#)
Accession#:

Gene Name: OCLN

Gene Alias: -

Gene [occludin](#)
Description:

Omim ID: [602876](#)

Gene Ontology: [Hyperlink](#)

Gene Summary: This gene encodes an integral membrane protein which is located at tight junctions. This protein may be involved in the formation and maintenance of the tight junction. The possibility of several alternatively spliced products has been suggested but the full nature of these products has not been described. [provided by RefSeq]

Other [tight junction protein occludin TM4 minus](#)
Designations:

Interactome



Gene Pathway

[Cell adhesion molecules \(CAMs\) Leukocyte transendothelial migration](#)
[Pathogenic Escherichia coli infection - EHEC Tight junction](#)

