



SZABO SCANDIC

Part of Europa Biosite

Produktinformation



Forschungsprodukte & Biochemikalien



Zellkultur & Verbrauchsmaterial



Diagnostik & molekulare Diagnostik



Laborgeräte & Service

Weitere Information auf den folgenden Seiten!
See the following pages for more information!



Lieferung & Zahlungsart

siehe unsere [Liefer- und Versandbedingungen](#)

Zuschläge

- Mindermengenzuschlag
- Trockeneiszuschlag
- Gefahrgutzuschlag
- Expressversand

SZABO-SCANDIC HandelsgmbH

Quellenstraße 110, A-1100 Wien

T. +43(0)1 489 3961-0

F. +43(0)1 489 3961-7

mail@szabo-scandic.com

www.szabo-scandic.com

[linkedin.com/company/szaboscandic](https://www.linkedin.com/company/szaboscandic) 

ODC1 (Human) Matched Antibody Pair

Catalog # : H00004953-AP61

規格 : [1 Set]

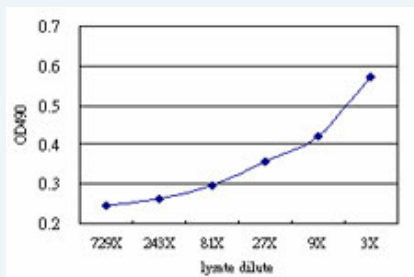
[List All](#)

Specification

Product Description: This antibody pair set comes with matched antibody pair to detect and quantify protein level of human ODC1.

Reactivity: Human

Quality Control Testing: Standard curve using ODC1 293T overexpression lysate (non-denatured) as an analyte.



Sandwich ELISA detection sensitivity ranging from approximately 27x to 3x dilution of the ODC1 293T overexpression lysate (non-denatured).

Supplied Product: Antibody pair set content:
 1. Capture antibody: mouse monoclonal anti-ODC1 (100 ug)
 2. Detection antibody: rabbit MaxPab® affinity purified polyclonal anti-ODC1 (50 ug)
 *Reagents are sufficient for at least 3-5 x 96 well plates using recommended protocols.

Storage Instruction: Store reagents of the antibody pair set at -20°C or lower. Please aliquot to avoid repeated freeze thaw cycle. Reagents should be returned to -20°C storage immediately after use.

MSDS:  [Download](#)

Applications

ELISA Pair (Transfected lysate)

 [Protocol Download](#)

Gene Information

Entrez GeneID: [4953](#)

Gene Name: ODC1

Gene Alias: ODC

Gene Description: ornithine decarboxylase 1

Omim ID: [114500](#), [165640](#)

Gene Ontology: [Hyperlink](#)

Application Image

ELISA Pair (Transfected lysate)

Gene Summary: This gene encodes the rate-limiting enzyme of the polyamine biosynthesis pathway which catalyzes ornithine to putrescine. The activity level for the enzyme varies in response to growth-promoting stimuli and exhibits a high turnover rate in comparison to other mammalian proteins. Originally localized to both chromosomes 2 and 7, the gene encoding this enzyme has been determined to be located on 2p25, with a pseudogene located on 7q31-qter. [provided by RefSeq]

Other Designations: -

Gene Pathway

[Arginine and proline metabolism](#)
[Biosynthesis of alkaloids derived from ornithine, lysine and nicotinic acid](#)
[Glutathione metabolism](#) [Metabolic pathways](#)

Related Disease

[Adenoma](#) [Adenomatous Polyposis Coli](#) [Breast cancer](#) [Breast Neoplasms](#) [Colon cancer](#)
[Colonic Neoplasms](#) [Colorectal Neoplasms](#) [Gastritis, Atrophic](#)
[Genetic Predisposition to Disease](#) [Neoplasm Recurrence, Local](#) [Precancerous Conditions](#)
[Recurrence](#) [Stomach Neoplasms](#)

[服務條款](#) | [隱私權政策](#) | [著作及商標](#) | [網站地圖](#)

©2016 亞諾法生技股份有限公司 Abnova Corporation. 版權所有.