



SZABO SCANDIC

Part of Europa Biosite

Produktinformation



Forschungsprodukte & Biochemikalien



Zellkultur & Verbrauchsmaterial



Diagnostik & molekulare Diagnostik



Laborgeräte & Service

Weitere Information auf den folgenden Seiten!
See the following pages for more information!



Lieferung & Zahlungsart

siehe unsere [Liefer- und Versandbedingungen](#)

Zuschläge

- Mindermengenzuschlag
- Trockeneiszuschlag
- Gefahrgutzuschlag
- Expressversand

SZABO-SCANDIC HandelsgmbH

Quellenstraße 110, A-1100 Wien

T. +43(0)1 489 3961-0

F. +43(0)1 489 3961-7

mail@szabo-scandic.com

www.szabo-scandic.com

[linkedin.com/company/szaboscandic](https://www.linkedin.com/company/szaboscandic) 

ODC1 293T Cell Transient Overexpression Lysate(Denatured)

Catalog # : H00004953-T01

規格 : [100 uL]

[List All](#)

Specification

Transfected Cell Line: 293T

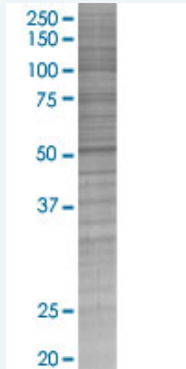
Plasmid: pCMV-ODC1 full-length

Host: Human

Theoretical MW (kDa): 51.1

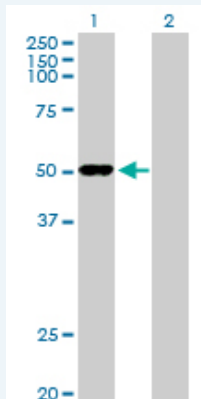
Quality Control Testing: Transient overexpression cell lysate was tested with Anti-ODC1 antibody ([H00004953-D01P](#)) by Western Blots.

SDS-PAGE Gel



ODC1 transfected lysate.

Western Blot



Lane 1: ODC1 transfected lysate (51.10 KDa)

Lane 2: Non-transfected lysate.

Storage Buffer: 1X Sample Buffer (50 mM Tris-HCl, 2% SDS, 10% glycerol, 300 mM 2-mercaptoethanol, 0.01% Bromophenol blue)

Storage Instruction: Store at -80°C. Aliquot to avoid repeated freezing and thawing.

MSDS:  [Download](#)

Applications

Western Blot

Gene Information

Entrez GeneID: [4953](#)

GeneBank [NM_002539.1](#)
Accession#:

Protein [NP_002530.1](#)
Accession#:

Gene Name: ODC1

Gene Alias: ODC

Gene Description: ornithine decarboxylase 1

Omim ID: [114500](#), [165640](#)

Gene Ontology: [Hyperlink](#)

Gene Summary: This gene encodes the rate-limiting enzyme of the polyamine biosynthesis pathway which catalyzes ornithine to putrescine. The activity level for the enzyme varies in response to growth-promoting stimuli and exhibits a high turnover rate in comparison to other mammalian proteins. Originally localized to both chromosomes 2 and 7, the gene encoding this enzyme has been determined to be located on 2p25, with a pseudogene located on 7q31-qter. [provided by RefSeq]

Other Designations: -

Gene Pathway

[Arginine and proline metabolism](#)
[Biosynthesis of alkaloids derived from ornithine, lysine and nicotinic acid](#)
[Glutathione metabolism](#) [Metabolic pathways](#)

Related Disease

[Adenoma](#) [Adenomatous Polyposis Coli](#) [Breast cancer](#) [Breast Neoplasms](#) [Colon cancer](#)
[Colonic Neoplasms](#) [Colorectal Neoplasms](#) [Gastritis, Atrophic](#)
[Genetic Predisposition to Disease](#) [Neoplasm Recurrence, Local](#) [Precancerous Conditions](#)
[Recurrence](#) [Stomach Neoplasms](#)