



# SZABO SCANDIC

Part of Europa Biosite

## Produktinformation



Forschungsprodukte & Biochemikalien



Zellkultur & Verbrauchsmaterial



Diagnostik & molekulare Diagnostik



Laborgeräte & Service

Weitere Information auf den folgenden Seiten!  
See the following pages for more information!



### Lieferung & Zahlungsart

siehe unsere [Liefer- und Versandbedingungen](#)

### Zuschläge

- Mindermengenzuschlag
- Trockeneiszuschlag
- Gefahrgutzuschlag
- Expressversand

### SZABO-SCANDIC HandelsgmbH

Quellenstraße 110, A-1100 Wien

T. +43(0)1 489 3961-0

F. +43(0)1 489 3961-7

[mail@szabo-scandic.com](mailto:mail@szabo-scandic.com)

[www.szabo-scandic.com](http://www.szabo-scandic.com)

[linkedin.com/company/szaboscandic](https://www.linkedin.com/company/szaboscandic) 

## ODF2 monoclonal antibody (M01), clone 1A1

Catalog # : H00004957-M01

規格 : [ 100 ug ]

[List All](#)

### Specification

**Product Description:** Mouse monoclonal antibody raised against a partial recombinant ODF2.

**Immunogen:** ODF2 (NP\_002531.3, 706 a.a. ~ 804 a.a) partial recombinant protein with GST tag. MW of the GST tag alone is 26 KDa.

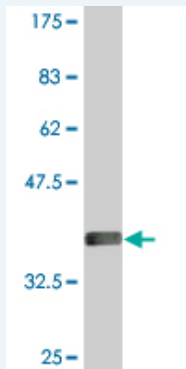
**Sequence:** KEHALSKERAAQNKILDLETQLSRTKTELSQLRRSRDDADRRYQSRLQD LKDRLEQSESTNRSMQNYVQFLKSSYANVFGDGPYSTFLTSSPIRSRSP P

**Host:** Mouse

**Reactivity:** Human

**Isotype:** IgG2a Kappa

**Quality Control Testing:** Antibody Reactive Against Recombinant Protein.



Western Blot detection against Immunogen (36.63 KDa) .

**Storage Buffer:** In 1x PBS, pH 7.4

**Storage Instruction:** Store at -20°C or lower. Aliquot to avoid repeated freezing and thawing.

**MSDS:** [Download](#)

**Datasheet:** [Download](#)

### Publication Reference

1. [Phosphatidylinositol phosphate kinase PIPKly and phosphatase INPP5E coordinate initiation of ciliogenesis.](#)  
Xu Q, Zhang Y, Wei Q, Huang Y, Hu J, Ling K. Nat Commun. 2016 Feb 26;7:10777.
2. [Type Iy phosphatidylinositol phosphate kinase targets to the centrosome and restrains centriole duplication.](#)  
Xu Q, Zhang Y, Xiong X, Huang Y, Salisbury JL, Hu J, Ling K. J Cell Sci. 2014 Jan 16.

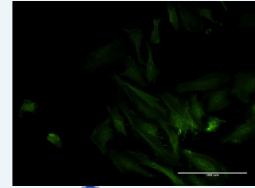
### Applications

Western Blot (Recombinant protein)

### Application Image

Western Blot (Recombinant protein)

Immunofluorescence

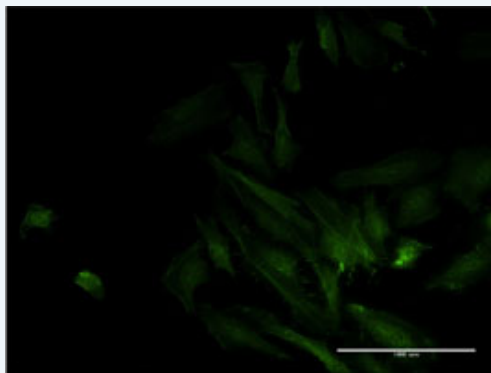



[enlarge](#)

Sandwich ELISA (Recombinant protein)

ELISA

### Immunofluorescence



 [enlarge this image](#)

Immunofluorescence of monoclonal antibody to ODF2 on HeLa cell . [antibody concentration 10 ug/ml]

 [Protocol Download](#)

### Sandwich ELISA (Recombinant protein)

Detection limit for recombinant GST tagged ODF2 is approximately 30ng/ml as a capture antibody.

 [Protocol Download](#)

### ELISA

### Gene Information

**Entrez GeneID:** [4957](#)

**GeneBank Accession#:** [NM\\_002540](#)

**Protein Accession#:** [NP\\_002531.3](#)

**Gene Name:** ODF2

**Gene Alias:** FLJ44866,MGC111096,MGC9034,ODF2/1,ODF2/2,ODF84

**Gene Description:** outer dense fiber of sperm tails 2

**Omim ID:** [602015](#)

**Gene Ontology:** [Hyperlink](#)

**Gene Summary:** The outer dense fibers are cytoskeletal structures that surround the axoneme in the middle piece and principal piece of the sperm tail. The fibers function in maintaining the elastic structure and recoil of the sperm tail as well as in protecting the tail from shear forces during epididymal transport and ejaculation. Defects in the outer dense fibers lead to abnormal sperm morphology and infertility. This gene encodes one of the major outer dense fiber proteins. Multiple protein isoforms are encoded by transcript variants of this gene; however, not all isoforms and variants have been fully described. [provided by RefSeq]

**Other Designations:** OTTHUMP00000022273,OTTHUMP00000022274,cenexin 1,outer dense fiber of sperm tails, 84-kD,outer dense fibre of sperm tails 2,sperm tail structural protein

### Related Disease

[Tobacco Use Disorder](#)

