



# SZABO SCANDIC

Part of Europa Biosite

## Produktinformation



Forschungsprodukte & Biochemikalien



Zellkultur & Verbrauchsmaterial



Diagnostik & molekulare Diagnostik



Laborgeräte & Service

Weitere Information auf den folgenden Seiten!  
See the following pages for more information!



### Lieferung & Zahlungsart

siehe unsere [Liefer- und Versandbedingungen](#)

### Zuschläge

- Mindermengenzuschlag
- Trockeneiszuschlag
- Gefahrgutzuschlag
- Expressversand

### SZABO-SCANDIC HandelsgmbH

Quellenstraße 110, A-1100 Wien

T. +43(0)1 489 3961-0

F. +43(0)1 489 3961-7

[mail@szabo-scandic.com](mailto:mail@szabo-scandic.com)

[www.szabo-scandic.com](http://www.szabo-scandic.com)

[linkedin.com/company/szaboscandic](https://www.linkedin.com/company/szaboscandic) 

## OLR1 MaxPab mouse polyclonal antibody (B01) MaxPab®

Catalog # : H00004973-B01

規格 : [ 50 uL ]

[List All](#)

### Specification

**Product Description:** Mouse polyclonal antibody raised against a full-length human OLR1 protein.

**Immunogen:** OLR1 (NP\_002534.1, 1 a.a. ~ 273 a.a) full-length human protein.

**Sequence:**  
 MTFDDLKIQTVKDQPDEKSNNGKKAKGLQFLYSPWWCLAATLGVLCLG  
 LVVTIMVLGMQLSQVSDLLTQEQLNLTHQKKLEGQISARQQAEEASQE  
 SENELKEMIETLARKLNEKSKEQMELHHQNLNLQETLKRVANCSAPCPQD  
 WIIWHGENCYLFSSGSFNWEKSQEKCLSLDAKLLKINSTADLDFIQQAISY  
 SSFPFWMGLSRRNPSYPWLWEDGSPLMPHLFRVRGAVSQTYPSTGCA  
 YIQRGAVYAENCILAAF SICQKKANLRAQ

**Host:** Mouse

**Reactivity:** Human

**Quality Control Testing:** Antibody reactive against mammalian transfected lysate.

**Storage Buffer:** No additive

**Storage Instruction:** Store at -20°C or lower. Aliquot to avoid repeated freezing and thawing.

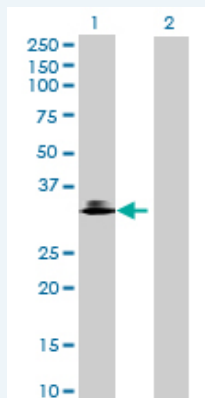
**Note:** For IHC and IF applications, antibody purification with Protein A will be needed prior to use.

**MSDS:**  [Download](#)

**Datasheet:**  [Download](#)

### Applications

#### Western Blot (Transfected lysate)



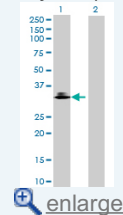
Western Blot analysis of OLR1 expression in transfected 293T cell line (H00004973-T01) by OLR1 MaxPab polyclonal antibody.


Lane1:OLR1 transfected lysate(30.03 KDa).

Lane2:Non-transfected lysate.

### Application Image

Western Blot (Transfected lysate)



 [enlarge](#)

## Gene Information

**Entrez GeneID:** [4973](#)

**GeneBank Accession#:** [NM\\_002543.2](#)

**Protein Accession#:** [NP\\_002534.1](#)

**Gene Name:** OLR1

**Gene Alias:** CLEC8A, LOX1, SCARE1

**Gene Description:** oxidized low density lipoprotein (lectin-like) receptor 1

**Omim ID:** [602601](#)

**Gene Ontology:** [Hyperlink](#)

**Gene Summary:** This gene encodes a receptor protein which belongs to the C-type lectin superfamily. This gene is regulated through the cyclic AMP signaling pathway. The encoded protein binds, internalizes and degrades oxidized low-density lipoprotein. This protein may be involved in the regulation of Fas-induced apoptosis. This protein may play a role as a scavenger receptor. Mutations of this gene have been associated with atherosclerosis, risk of myocardial infarction, and may modify the risk of Alzheimer's disease. Alternative transcript variants have been described but their full-length sequence has not been determined. [provided by RefSeq]

**Other Designations:** lectin-type oxidized LDL receptor 1, oxidised low density lipoprotein (lectin-like) receptor 1, scavenger receptor class E, member 1

## Gene Pathway

[PPAR signaling pathway](#)

## Related Disease

[Alzheimer Disease](#) [Alzheimer disease](#) [Atherosclerosis](#) [Atherosclerosis](#) [Brain Ischemia](#) [Calcinosis](#) [Cardiovascular Diseases](#) [Cerebral Amyloid Angiopathy](#) [Cerebrovascular Accident](#) [Cerebrovascular Disorders](#) [Constriction, Pathologic](#) [Coronary Artery Disease](#) [Coronary Stenosis](#) [Diabetes Complications](#) [Diabetes Mellitus, Type 2](#) [Disease Progression](#) [Drug Toxicity](#) [Edema](#) [Genetic Predisposition to Disease](#)

... see more