



# SZABO SCANDIC

Part of Europa Biosite

## Produktinformation



Forschungsprodukte & Biochemikalien



Zellkultur & Verbrauchsmaterial



Diagnostik & molekulare Diagnostik



Laborgeräte & Service

Weitere Information auf den folgenden Seiten!  
See the following pages for more information!



### Lieferung & Zahlungsart

siehe unsere [Liefer- und Versandbedingungen](#)

### Zuschläge

- Mindermengenzuschlag
- Trockeneiszuschlag
- Gefahrgutzuschlag
- Expressversand

### SZABO-SCANDIC HandelsgmbH

Quellenstraße 110, A-1100 Wien

T. +43(0)1 489 3961-0

F. +43(0)1 489 3961-7

[mail@szabo-scandic.com](mailto:mail@szabo-scandic.com)

[www.szabo-scandic.com](http://www.szabo-scandic.com)

[linkedin.com/company/szaboscandic](https://www.linkedin.com/company/szaboscandic) 

**OPA1 purified MaxPab rabbit polyclonal antibody (D01P)** MaxPab®

Catalog # : H00004976-D01P

規格 : [ 100 ug ]

[List All](#)

**Specification**

**Product Description:** Rabbit polyclonal antibody raised against a full-length human OPA1 protein.

**Immunogen:** OPA1 (NP\_056375.1, 1 a.a. ~ 960 a.a) full-length human protein.

**Sequence:**  
 MWRLRRAAVACEVCQSLVKHSSGIGKSLPLQKLHLVSRSIYHSHHPTLKL  
 QRPQLRTSFQQFSSLTNLPLRKLKFSPIKYGYQPRRNFWPARLATRLLK  
 LRYLILGSAVGGGYTAKKTFDQWKDMIPDLSEYKWVWPDIVWEIDEYIDFE  
 KIRKALPSSSEDLVKLAPDFDKIVESLSLLKDFFTSGSPEETAFRATDRGSE  
 SDKHFRKVS DKEIDQLQEELLHTQLKYQRILERLEKENKELRKLVLQKD  
 DKGIIHRKLLKSLIDMYSEVLDVLSYDASYNTQDHLPRVWVGDQSAGK  
 TSVLEMAQARIFPRGSGEMMTRSPVKVLTSEGP HHVALFKDSSREFDLT  
 KEEDLAALRHEIELRMRKNVKEGCTVSPETISLNVKGPGLQRMVLDLPG  
 VINTVTS GMAPDTKETIF SISKAYMQNPNAIILCIQDGSVDAERSIVTDLVSQ  
 MDPHGRRTIFVLT KVDLAEKNVASPSRIQQIIEGKLFPMKALGYFAVVTGK  
 GNSSIESIAIREYEEFFQNSKLLKTSMLKAHQVTRNLSLAVSDCFWKM  
 VRESVEQQADSFKATRFNLET EWKNYPRLRELD RNELFEKAKNEILDE  
 VISLSQVTPKHWEELQQSLWERVSTHVIENIYLPAAQTMNSGTFNTTVDI  
 KLKQWTDKQLPNKAVEVAWETLQEEFSRFMTEPKGKEHDDIFDKLKEAV  
 KEESIKRHKW NDF AEDSLRVIQHNALED RSISDKQWDAAYFMEEALQA  
 RLKDTENAIENMVGPDWKKRWLYWKNRTQEQC VHNETKNELEKMLKCN  
 EEHPAYLASDEITVRKNLESRGVEVDPSLIKDTWHQVYRRHFLK TALNH  
 CNLCRRGFYYYQRHFV DSELECNDVLFWRIQRMLAITANTLRQQLTNT  
 EVRRLEKNVKEVLEDF AEDGEKKIKLLTGKRVQLAEDLKKVREIQEKLDA  
 FIEALHQEK

**Host:** Rabbit

**Reactivity:** Human

**Quality Control Testing:** Antibody reactive against mammalian transfected lysate.

**Storage Buffer:** In 1x PBS, pH 7.4

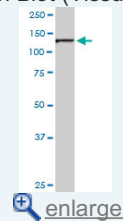
**Storage Instruction:** Store at -20°C or lower. Aliquot to avoid repeated freezing and thawing.

**MSDS:**  [Download](#)

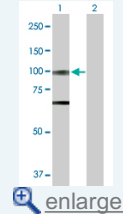
**Datasheet:**  [Download](#)

**Application Image**

Western Blot (Tissue lysate)

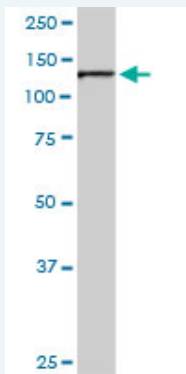


Western Blot (Transfected lysate)



**Applications**

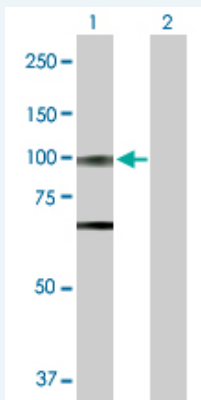
Western Blot (Tissue lysate)



OPA1 MaxPab rabbit polyclonal antibody. Western Blot analysis of OPA1 expression in human colon.

 [Protocol Download](#)

#### Western Blot (Transfected lysate)



Western Blot analysis of OPA1 expression in transfected 293T cell line ([H00004976-T01](#)) by OPA1 MaxPab polyclonal antibody.

Lane 1: OPA1 transfected lysate(111.60 KDa).

Lane 2: Non-transfected lysate.

 [Protocol Download](#)

#### Gene Information

**Entrez GeneID:** [4976](#)

**GeneBank Accession#:** [NM\\_015560](#)

**Protein Accession#:** [NP\\_056375.1](#)

**Gene Name:** OPA1

**Gene Alias:** FLJ12460, KIAA0567, MGM1, NPG, NTG, largeG

**Gene Description:** optic atrophy 1 (autosomal dominant)

**Omim ID:** [125250](#), [165500](#), [605290](#), [606657](#)

**Gene Ontology:** [Hyperlink](#)

**Gene Summary:** This gene product is a nuclear-encoded mitochondrial protein with similarity to dynamin-related GTPases. It is a component of the mitochondrial network. Mutations in this gene have been associated with optic atrophy type 1, which is a dominantly inherited optic neuropathy resulting in progressive loss of visual acuity, leading in many cases to legal blindness. Multiple transcript variants encoding different isoforms have been found for this gene. [provided by RefSeq]

**Other** OTTHUMP00000195065,mitochondrial dynamin-like GTPase,optic  
**Designations:** atrophy 1

---

### **Related Disease**

---

[Genetic Predisposition to Disease](#) [Glaucoma](#) [Glaucoma](#) [Glaucoma, Open-Angle](#)  
[Leber hereditary optic neuropathy](#) [Low Tension Glaucoma](#) [Ocular Hypertension](#)  
[Optic Atrophies, Hereditary](#) [Optic Atrophy](#) [Optic Atrophy, Autosomal Dominant](#)  
[Optic Atrophy, Hereditary, Leber](#)

---

[服務條款](#) | [隱私權政策](#) | [著作及商標](#) | [網站地圖](#)

©2016 亞諾法生技股份有限公司 Abnova Corporation. 版權所有.