



SZABO SCANDIC

Part of Europa Biosite

Produktinformation



Forschungsprodukte & Biochemikalien



Zellkultur & Verbrauchsmaterial



Diagnostik & molekulare Diagnostik



Laborgeräte & Service

Weitere Information auf den folgenden Seiten!
See the following pages for more information!



Lieferung & Zahlungsart

siehe unsere [Liefer- und Versandbedingungen](#)

Zuschläge

- Mindermengenzuschlag
- Trockeneiszuschlag
- Gefahrgutzuschlag
- Expressversand

SZABO-SCANDIC HandelsgmbH

Quellenstraße 110, A-1100 Wien

T. +43(0)1 489 3961-0

F. +43(0)1 489 3961-7

mail@szabo-scandic.com

www.szabo-scandic.com

[linkedin.com/company/szaboscandic](https://www.linkedin.com/company/szaboscandic) 

OPA1 monoclonal antibody (M06), clone 8A32

Catalog # : H00004976-M06

規格 : [100 ug]

List All

Specification

Product Description: Mouse monoclonal antibody raised against a partial recombinant OPA1.

Immunogen: OPA1 (NP_056375, 851 a.a. ~ 960 a.a) partial recombinant protein with GST tag. MW of the GST tag alone is 26 KDa.

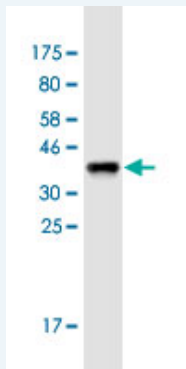
Sequence: NHCNLCRRGFYYYQRHFVDSELECNDVWLFWRQRLAITANTLRQQLT
NTEVRRLEKNVKEVLEDFAEEDGEKKIKLLTGKRVQLAEDLKKVREIQEKL
DAFIEALHQEK

Host: Mouse

Reactivity: Human, Rat

Isotype: IgG2a Kappa

Quality Control Testing: Antibody Reactive Against Recombinant Protein.



Western Blot detection against Immunogen (37.84 KDa) .

Storage Buffer: In 1x PBS, pH 7.4

Storage Instruction: Store at -20°C or lower. Aliquot to avoid repeated freezing and thawing.

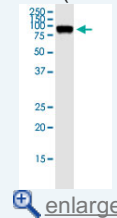
Datasheet: [Download](#)

Applications

Western Blot (Tissue lysate)

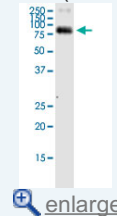
Application Image

Western Blot (Tissue lysate)



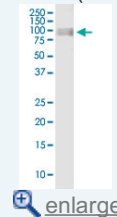
[enlarge](#)

Western Blot (Tissue lysate)



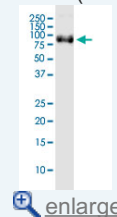
[enlarge](#)

Western Blot (Cell lysate)



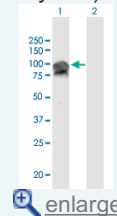
[enlarge](#)

Western Blot (Cell lysate)



[enlarge](#)

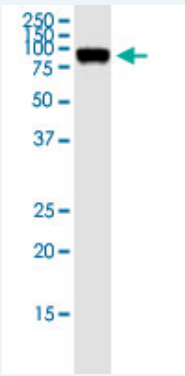
Western Blot (Transfected lysate)




[enlarge](#)

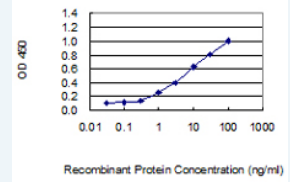
Western Blot (Recombinant protein)


Sandwich ELISA (Recombinant protein)



OPA1 monoclonal antibody (M06), clone 8A32. Western Blot analysis of OPA1 expression in human ovarian cancer.

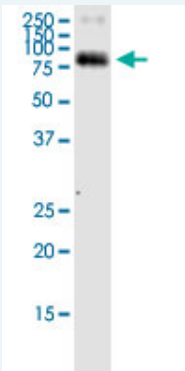
 [Protocol Download](#)



 [enlarge](#)

ELISA

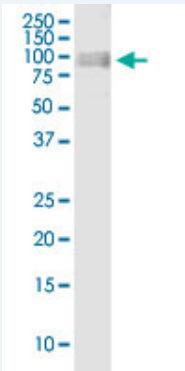
Western Blot (Tissue lysate)



OPA1 monoclonal antibody (M06), clone 8A32. Western Blot analysis of OPA1 expression in rat brain.

 [Protocol Download](#)

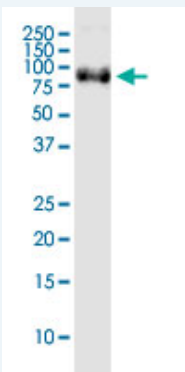
Western Blot (Cell lysate)



OPA1 monoclonal antibody (M06), clone 8A32. Western Blot analysis of OPA1 expression in PC-12.

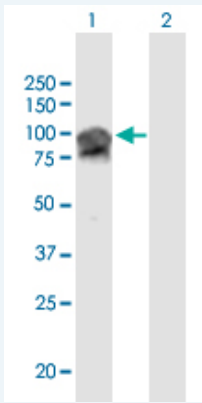
 [Protocol Download](#)

Western Blot (Cell lysate)



OPA1 monoclonal antibody (M06), clone 8A32. Western Blot analysis of OPA1 expression in Daoy.

Western Blot (Transfected lysate)

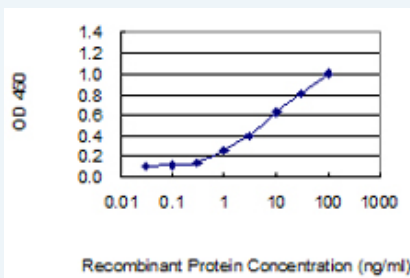


Western Blot analysis of OPA1 expression in transfected 293T cell line by OPA1 monoclonal antibody (M06), clone 8A32.

Lane 1: OPA1 transfected lysate (Predicted MW: 111.6 KDa).
Lane 2: Non-transfected lysate.

Western Blot (Recombinant protein)

Sandwich ELISA (Recombinant protein)



Detection limit for recombinant GST tagged OPA1 is 0.1 ng/ml as a capture antibody.

ELISA

Gene Information

Entrez GeneID: [4976](#)

GeneBank [NM_015560](#)

Accession#:

Protein [NP_056375](#)

Accession#:

Gene Name: OPA1

Gene Alias: FLJ12460, KIAA0567, MGM1, NPG, NTG, largeG

Gene Description: optic atrophy 1 (autosomal dominant)

Description:

Omim ID: [125250](#), [165500](#), [605290](#), [606657](#)

Gene Ontology: [Hyperlink](#)

Gene Summary: This gene product is a nuclear-encoded mitochondrial protein with similarity to dynamin-related GTPases. It is a component of the mitochondrial network. Mutations in this gene have been associated with

optic atrophy type 1, which is a dominantly inherited optic neuropathy resulting in progressive loss of visual acuity, leading in many cases to legal blindness. Multiple transcript variants encoding different isoforms have been found for this gene. [provided by RefSeq]

Other Designations: OTTHUMP00000195065,mitochondrial dynamin-like GTPase,optic atrophy 1

Related Disease

[Genetic Predisposition to Disease](#) [Glaucoma](#) [Glaucoma](#) [Glaucoma, Open-Angle](#) [Leber hereditary optic neuropathy](#) [Low Tension Glaucoma](#) [Ocular Hypertension](#) [Optic Atrophies, Hereditary](#) [Optic Atrophy](#) [Optic Atrophy, Autosomal Dominant](#) [Optic Atrophy, Hereditary](#) [Leber](#)

[服務條款](#) | [隱私權政策](#) | [著作及商標](#) | [網站地圖](#)

©2016 亞諾法生技股份有限公司 Abnova Corporation. 版權所有.