



SZABO SCANDIC

Part of Europa Biosite

Produktinformation



Forschungsprodukte & Biochemikalien



Zellkultur & Verbrauchsmaterial



Diagnostik & molekulare Diagnostik



Laborgeräte & Service

Weitere Information auf den folgenden Seiten!
See the following pages for more information!



Lieferung & Zahlungsart

siehe unsere [Liefer- und Versandbedingungen](#)

Zuschläge

- Mindermengenzuschlag
- Trockeneiszuschlag
- Gefahrgutzuschlag
- Expressversand

SZABO-SCANDIC HandelsgmbH

Quellenstraße 110, A-1100 Wien

T. +43(0)1 489 3961-0

F. +43(0)1 489 3961-7

mail@szabo-scandic.com

www.szabo-scandic.com

[linkedin.com/company/szaboscandic](https://www.linkedin.com/company/szaboscandic) 



ORC1L monoclonal antibody (M01), clone 3H1

Catalog # : H00004998-M01

規格 : [100 ug]

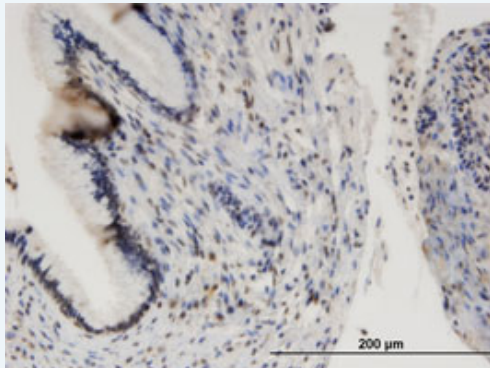
[List All](#)


Specification

Product Description:	Mouse monoclonal antibody raised against a partial recombinant ORC1L.
Immunogen:	ORC1L (AAH11539, 1 a.a. ~ 110 a.a) partial recombinant protein with GST tag. MW of the GST tag alone is 26 KDa.
Sequence:	MAHYPTRLKTRKTYSWGRPLLDRKLHYQTYREMCVKTEGCSTEIHIQI GQFVLIEGDDDENPYVAKLLELFEDDSDPPPKKRARVQWFVRFCEVPAC KRHLLGRKPGAQ
Host:	Mouse
Reactivity:	Human
Isotype:	IgG2b Kappa
Quality Control Testing:	Antibody Reactive Against Recombinant Protein.
Storage Buffer:	In 1x PBS, pH 7.4
Storage Instruction:	Store at -20°C or lower. Aliquot to avoid repeated freezing and thawing.
MSDS:	 Download
Datasheet:	 Download


Applications

Immunohistochemistry (Formalin/PFA-fixed paraffin-embedded sections)



 [enlarge this image](#)

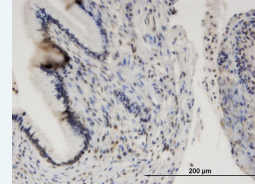
Immunoperoxidase of monoclonal antibody to ORC1L on formalin-fixed paraffin-embedded human uterine cervix. [antibody concentration 3 ug/ml]


 [Protocol Download](#)

Sandwich ELISA (Recombinant protein)

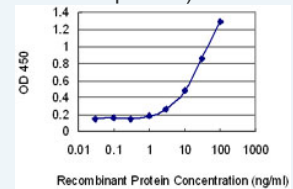
Application Image


Immunohistochemistry
(Formalin/PFA-fixed paraffin-embedded sections)



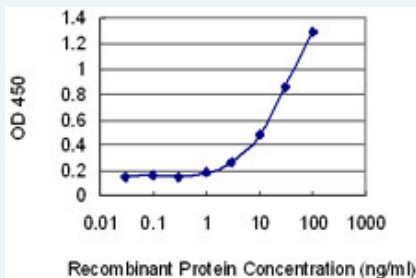
 [enlarge](#)

Sandwich ELISA (Recombinant protein)




 [enlarge](#)

ELISA



Detection limit for recombinant GST tagged ORC1L is 0.3 ng/ml as a capture antibody.

 [Protocol Download](#)

ELISA

Gene Information

Entrez GeneID: [4998](#)

GeneBank [BC011539](#)

Accession#:

Protein [AAH11539](#)

Accession#:

Gene Name: ORC1L

Gene Alias: HSORC1,ORC1,PARC1

Gene description: origin recognition complex, subunit 1-like (yeast)

Description:

Omim ID: [601902](#)

Gene Ontology: [Hyperlink](#)

Gene Summary: The origin recognition complex (ORC) is a highly conserved six subunits protein complex essential for the initiation of the DNA replication in eukaryotic cells. Studies in yeast demonstrated that ORC binds specifically to origins of replication and serves as a platform for the assembly of additional initiation factors such as Cdc6 and Mcm proteins. The protein encoded by this gene is the largest subunit of the ORC complex. While other ORC subunits are stable throughout the cell cycle, the levels of this protein vary during the cell cycle, which has been shown to be controlled by ubiquitin-mediated proteolysis after initiation of DNA replication. This protein is found to be selectively phosphorylated during mitosis. It is also reported to interact with MYST histone acetyltransferase 2 (MyST2/HBO1), a protein involved in control of transcription silencing. [provided by RefSeq]

Other Designations: OTTHUMP00000009797,OTTHUMP00000009798,origin recognition complex 1,origin recognition complex, subunit 1,origin recognition complex, subunit 1, S. cerevisiae, homolog-like,replication control protein 1

Gene Pathway

[Cell cycle](#)