



# SZABO SCANDIC

Part of Europa Biosite

## Produktinformation



Forschungsprodukte & Biochemikalien



Zellkultur & Verbrauchsmaterial



Diagnostik & molekulare Diagnostik



Laborgeräte & Service

Weitere Information auf den folgenden Seiten!  
See the following pages for more information!



### Lieferung & Zahlungsart

siehe unsere [Liefer- und Versandbedingungen](#)

### Zuschläge

- Mindermengenzuschlag
- Trockeneiszuschlag
- Gefahrgutzuschlag
- Expressversand

### SZABO-SCANDIC HandelsgmbH

Quellenstraße 110, A-1100 Wien

T. +43(0)1 489 3961-0

F. +43(0)1 489 3961-7

[mail@szabo-scandic.com](mailto:mail@szabo-scandic.com)

[www.szabo-scandic.com](http://www.szabo-scandic.com)

[linkedin.com/company/szaboscandic](https://www.linkedin.com/company/szaboscandic) 

## ORC2L monoclonal antibody (M01), clone 3E11-1G5

Catalog # : H00004999-M01

規格 : [ 100 ug ]

[List All](#)

### Specification

**Product Description:** Mouse monoclonal antibody raised against a full length recombinant ORC2L.

**Immunogen:** ORC2L (AAH14834, 1 a.a. ~ 577 a.a) full-length recombinant protein with GST tag. MW of the GST tag alone is 26 KDa.

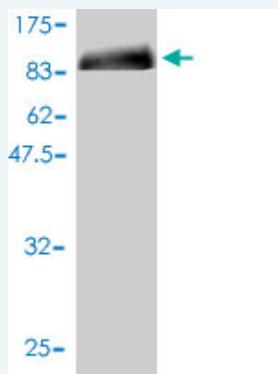
**Sequence:** MSKPELKEDKMLEVHFVGGDDVNLNHLIDREGGAKLKKERAQLLVNPKKIIK  
 KPEYDLEEDDQEVLDQNYVEIMGRDVQESLKNGSATGGGNKVYSFQN  
 RKHSEKMAKLASELAKTPQKSVSFSLKNDPEITINVPQSSKGHSASDKVQ  
 PKNNDKSEFLSTAPRSLRKRLIVPRSHSDSESEYSASNSEDDEGVAQEHE  
 EDTNAVIFSQKIQANRVSAPVGKETPSKRMKRDKTSDLVEEYFEAHSS  
 SKVLTSDRTLQKLKRAKLDQQLRNLKSVSPSFSAEKQLNQYKELF  
 HKWMLQLHLGFNIVLYGLGSKRDLLERFRTTMLQDSIHVINGFFPGISVK  
 SVLNSITEEVLDMGTFRSILDQLDWVWVNFKEDSSLELFLLIHNLDSQML  
 RGEKSQQIIGQLSSLHNIYLIASIDHLNAPLMWDHAKQSLFNWLWYETTTY  
 SPYTEETSYENSLLVKQSGSLPLSSLTHVLRSLTPNARGIFRLLIKYQLDN  
 QDNPSYIGLSFQDFYQQCREAFLVNSDLTLRAQLTEFRDHKLIIRTKKGT  
 DGVEYLLIPVDNGTLTDFLEKEEEEEA

**Host:** Mouse

**Reactivity:** Human

**Isotype:** IgG1 kappa

**Quality Control Testing:** Antibody Reactive Against Recombinant Protein.



Western Blot detection against Immunogen (89.21 KDa) .

**Storage Buffer:** In 1x PBS, pH 7.4

**Storage Instruction:** Store at -20°C or lower. Aliquot to avoid repeated freezing and thawing.

**MSDS:** [Download](#)

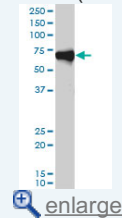
**Datasheet:** [Download](#)

### Publication Reference

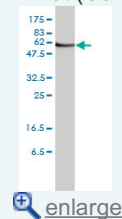
1. [RBM3-regulated genes promote DNA integrity and affect clinical outcome in epithelial ovarian cancer.](#)

### Application Image

Western Blot (Cell lysate)

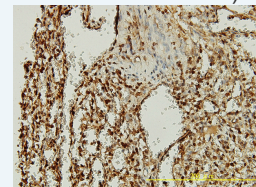


Western Blot (Cell lysate)

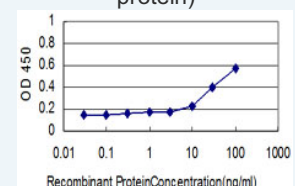


Western Blot (Recombinant protein)

Immunohistochemistry (Formalin/PFA-fixed paraffin-embedded sections)



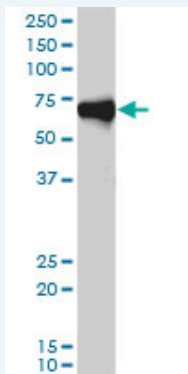
Sandwich ELISA (Recombinant protein)




ELISA

## Applications

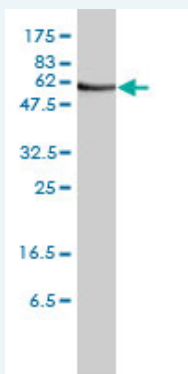
### Western Blot (Cell lysate)




ORC2L monoclonal antibody (M01), clone 3E11-1G5. Western Blot analysis of ORC2L expression in HeLa S3 NE ( Cat # L013V3 ).

 [Protocol Download](#)

### Western Blot (Cell lysate)



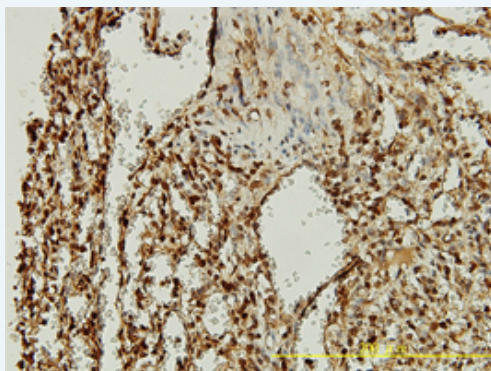
ORC2L monoclonal antibody (M01), clone 3E11-1G5 Western Blot analysis of ORC2L expression in Jurkat ( Cat # L017V1 ).


 [Protocol Download](#)

### Western Blot (Recombinant protein)

 [Protocol Download](#)

### Immunohistochemistry (Formalin/PFA-fixed paraffin-embedded sections)

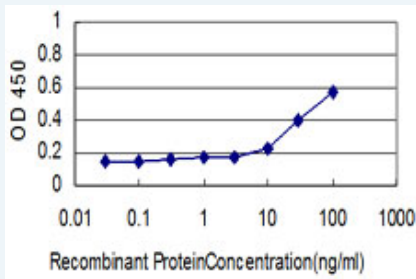


 enlarge this image


Immunoperoxidase of monoclonal antibody to ORC2L on formalin-fixed paraffin-embedded human spleen tissue. [antibody concentration 5 ug/ml]

 [Protocol Download](#)

### Sandwich ELISA (Recombinant protein)



Detection limit for recombinant GST tagged ORC2L is approximately 0.3ng/ml as a capture antibody.

 [Protocol Download](#)

## ELISA

### Gene Information

**Entrez GeneID:** [4999](#)

**GeneBank** [BC014834](#)

**Accession#:**

**Protein** [AAH14834](#)

**Accession#:**

**Gene Name:** ORC2L

**Gene Alias:** ORC2

**Gene Description:** origin recognition complex, subunit 2-like (yeast)

**Omim ID:** [601182](#)

**Gene Ontology:** [Hyperlink](#)

**Gene Summary:** The origin recognition complex (ORC) is a highly conserved six subunits protein complex essential for the initiation of the DNA replication in eukaryotic cells. Studies in yeast demonstrated that ORC binds specifically to origins of replication and serves as a platform for the assembly of additional initiation factors such as Cdc6 and Mcm proteins. The protein encoded by this gene is a subunit of the ORC complex. This protein forms a core complex with ORC3L, -4L, and -5L. It also interacts with CDC45L and MCM10, which are proteins known to be important for the initiation of DNA replication. This protein has been demonstrated to specifically associate with the origin of replication of Epstein-Barr virus in human cells, and is thought to be required for DNA replication from viral origin of replication. [provided by RefSeq]

**Other Designations:** origin of replication 2-like, origin recognition complex protein 2 homolog, origin recognition complex, subunit 2

### Gene Pathway

[Cell cycle](#)