



# SZABO SCANDIC

Part of Europa Biosite

## Produktinformation



Forschungsprodukte & Biochemikalien



Zellkultur & Verbrauchsmaterial



Diagnostik & molekulare Diagnostik



Laborgeräte & Service

Weitere Information auf den folgenden Seiten!  
See the following pages for more information!



### Lieferung & Zahlungsart

siehe unsere [Liefer- und Versandbedingungen](#)

### Zuschläge

- Mindermengenzuschlag
- Trockeneiszuschlag
- Gefahrgutzuschlag
- Expressversand

### SZABO-SCANDIC HandelsgmbH

Quellenstraße 110, A-1100 Wien

T. +43(0)1 489 3961-0

F. +43(0)1 489 3961-7

[mail@szabo-scandic.com](mailto:mail@szabo-scandic.com)

[www.szabo-scandic.com](http://www.szabo-scandic.com)

[linkedin.com/company/szaboscandic](https://www.linkedin.com/company/szaboscandic) 



## SLC22A18 purified MaxPab mouse polyclonal antibody (B01P) MaxPab®

Catalog # : H00005002-B01P

規格 : [ 50 ug ]

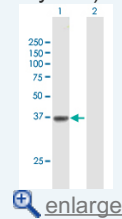
[List All](#)

### Specification

<b>Product Description:</b>	Mouse polyclonal antibody raised against a full-length human SLC22A18 protein.
<b>Immunogen:</b>	SLC22A18 (NP_002546.2, 1 a.a. ~ 424 a.a) full-length human protein.
<b>Sequence:</b>	MQGARAPRDQQSPGRMSALGRSSVILLTYVLAATELTCLFMQFSIVPY LSRKLGLDSIAFGYLQTTFGVLQLLGGPVFGRFADQRGARAALTSFLA ALALYLLAAASSPALPGVYLLFASRLPGALMHTLPAAQMVIDLSAPEER PAALGRLGLCFGVGVILGSLGGTLVSAYGIQCPAILAALATLLGAVLSFT CIPASTKGAKTDAQAPLPGGPRASVFDLKAIASLLRLPDVPRIFLVKVASN CPTGLFMVMFSIISMDFQLEAAQAGYLMSSFGLLQMVTQGLVIGQLSS HFSEEVLLRASLVFIVGLAMAWMSSVFHFCLLVPGLVFSLCTLNWTD SMLIKAVSTSDTGTMLGLCASVQPLLRTLGPVGGLLYRSFGVPVFGHV QVAINTLVLLVLRKMPQRKDKVR
<b>Host:</b>	Mouse
<b>Reactivity:</b>	Human
<b>Quality Control Testing:</b>	Antibody reactive against mammalian transfected lysate.
<b>Storage Buffer:</b>	In 1x PBS, pH 7.4
<b>Storage Instruction:</b>	Store at -20°C or lower. Aliquot to avoid repeated freezing and thawing.
<b>MSDS:</b>	 <a href="#">Download</a>
<b>Datasheet:</b>	 <a href="#">Download</a>

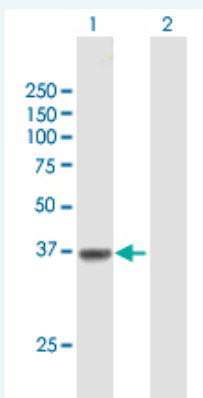
### Application Image

Western Blot (Transfected lysate)



### Applications

#### Western Blot (Transfected lysate)



Western Blot analysis of SLC22A18 expression in transfected 293T cell line (H00005002-T01) by SLC22A18 MaxPab polyclonal antibody.

Lane 1: SLC22A18 transfected lysate(46.64 KDa).

Lane 2: Non-transfected lysate.

## Gene Information

**Entrez GeneID:** [5002](#)

**GeneBank Accession#:** [NM\\_002555.3](#)

**Protein Accession#:** [NP\\_002546.2](#)

**Gene Name:** SLC22A18

**Gene Alias:** BWR1A,BWSCR1A,DKFZp667A184,HET,IMPT1,ITM,ORCTL2,SLC22A1L,TSSC5,p45-BWR1A

**Gene Description:** solute carrier family 22, member 18

**Omim ID:** [114480](#), [211980](#), [268210](#), [602631](#)

**Gene Ontology:** [Hyperlink](#)

**Gene Summary:** This gene is one of several tumor-suppressing subtransferable fragments located in the imprinted gene domain of 11p15.5, an important tumor-suppressor gene region. Alterations in this region have been associated with the Beckwith-Wiedemann syndrome, Wilms tumor, rhabdomyosarcoma, adrenocortical carcinoma, and lung, ovarian, and breast cancer. This gene may play a role in malignancies and disease that involve this region as well as the transport of chloroquine- and quinidine-related compounds in the kidney. Two alternative transcripts encoding the same isoform have been described. [provided by RefSeq]

**Other Designations:** Beckwith-Wiedemann syndrome chromosome region 1, candidate A,OTTHUMP00000011732,OTTHUMP00000011733,efflux transporter-like protein,imprinted multi-membrane spanning polyspecific transporter-related protein,organic cation transporter-like 2,p45 Beckwith-Wi