



# SZABO SCANDIC

Part of Europa Biosite

## Produktinformation



Forschungsprodukte & Biochemikalien



Zellkultur & Verbrauchsmaterial



Diagnostik & molekulare Diagnostik



Laborgeräte & Service

Weitere Information auf den folgenden Seiten!  
See the following pages for more information!



### Lieferung & Zahlungsart

siehe unsere [Liefer- und Versandbedingungen](#)

### Zuschläge

- Mindermengenzuschlag
- Trockeneiszuschlag
- Gefahrgutzuschlag
- Expressversand

### SZABO-SCANDIC HandelsgmbH

Quellenstraße 110, A-1100 Wien

T. +43(0)1 489 3961-0

F. +43(0)1 489 3961-7

[mail@szabo-scandic.com](mailto:mail@szabo-scandic.com)

[www.szabo-scandic.com](http://www.szabo-scandic.com)

[linkedin.com/company/szaboscandic](https://www.linkedin.com/company/szaboscandic) 

## SLC22A18AS polyclonal antibody (A01)

Catalog # : H00005003-A01

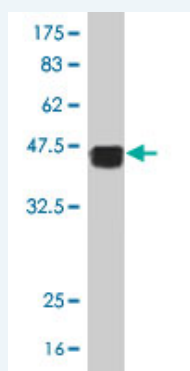
規格 : [ 50 uL ]

[List All](#)

### Specification

<b>Product Description:</b>	Mouse polyclonal antibody raised against a partial recombinant SLC22A18AS.
<b>Immunogen:</b>	SLC22A18AS (NP_009036, 144 a.a. ~ 253 a.a) partial recombinant protein with GST tag.
<b>Sequence:</b>	EWYVSVPDNPVPGQNGSRRRPLVCKITGKCLSVCSEENAKAGGCSAFPLLL SQLGARMYGREHAHKGPELTPDPSGLPRPPNPALAGFRALAQHSPPLG TSTPSAVLLSAAT
<b>Host:</b>	Mouse
<b>Reactivity:</b>	Human

**Quality Control Testing:** Antibody Reactive Against Recombinant Protein.



Western Blot detection against Immunogen (38.21 kDa) .

**Storage Buffer:** 50 % glycerol

**Storage Instruction:** Store at -20°C or lower. Aliquot to avoid repeated freezing and thawing.

**MSDS:** [Download](#)

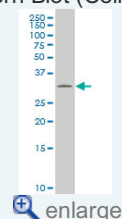
**Datasheet:** [Download](#)

### Applications

Western Blot (Cell lysate)

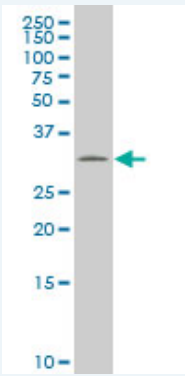
### Application Image

Western Blot (Cell lysate)



Western Blot (Recombinant protein)

ELISA



SLC22A18AS polyclonal antibody (A01), Lot # 061025JCS1 Western Blot analysis of SLC22A18AS expression in SJCRH30 ( Cat # L027V1 ).

 [Protocol Download](#)

#### Western Blot (Recombinant protein)

 [Protocol Download](#)

#### ELISA

#### Gene Information

**Entrez GeneID:** [5003](#)

**GeneBank Accession#:** [NM\\_007105](#)

**Protein Accession#:** [NP\\_009036](#)

**Gene Name:** SLC22A18AS

**Gene Alias:** BWR1B,BWSCR1B,ORCTL2S,SLC22A1LS,p27-BWR1B

**Gene Description:** solute carrier family 22 (organic cation transporter), member 18 antisense

**Omim ID:** [603240](#)

**Gene Ontology:** [Hyperlink](#)

**Other Designations:** Beckwith-Wiedemann region 1B,Beckwith-Wiedemann syndrome chromosome region 1, candidate b,organic cation transporter-like 2 antisense,solute carrier family 22 (organic cation transporter), member 1-like antisense