



SZABO SCANDIC

Part of Europa Biosite

Produktinformation



Forschungsprodukte & Biochemikalien



Zellkultur & Verbrauchsmaterial



Diagnostik & molekulare Diagnostik



Laborgeräte & Service

Weitere Information auf den folgenden Seiten!
See the following pages for more information!



Lieferung & Zahlungsart

siehe unsere [Liefer- und Versandbedingungen](#)

Zuschläge

- Mindermengenzuschlag
- Trockeneiszuschlag
- Gefahrgutzuschlag
- Expressversand

SZABO-SCANDIC HandelsgmbH

Quellenstraße 110, A-1100 Wien

T. +43(0)1 489 3961-0

F. +43(0)1 489 3961-7

mail@szabo-scandic.com

www.szabo-scandic.com

[linkedin.com/company/szaboscandic](https://www.linkedin.com/company/szaboscandic) 

SLC22A18AS monoclonal antibody (M05), clone 4B1

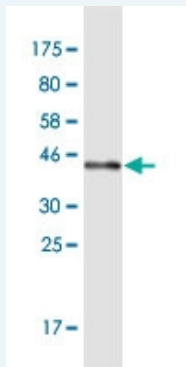
Catalog # : H00005003-M05

規格 : [100 ug]

[List All](#)

Specification

Product Description:	Mouse monoclonal antibody raised against a full-length recombinant SLC22A18AS.
Immunogen:	SLC22A18AS (AAH30237.1, 1 a.a. ~ 150 a.a) full-length recombinant protein with GST tag. MW of the GST tag alone is 26 KDa.
Sequence:	MRC AEGAWWFSPDGPAGSAASIWPAEAGAEGLPGQLGRDRLEWVYSVP DNVPGQNGSRRPLVCKITGKCLSVCSEENAKAGGCSAFPLLLSQLGAR MTGREHAHKPELTPD SGLPRPPNPALAGFRALAQHSPPLGTSTPSAV LLSAAT
Host:	Mouse
Reactivity:	Human
Isotype:	IgG2a Kappa
Quality Control Testing:	Antibody Reactive Against Recombinant Protein.



Western Blot detection against Immunogen (41.8 KDa) .

Storage Buffer: In 1x PBS, pH 7.4

Storage Instruction: Store at -20°C or lower. Aliquot to avoid repeated freezing and thawing.

MSDS: [Download](#)

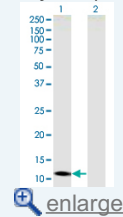
Datasheet: [Download](#)

Applications

Western Blot (Transfected lysate)

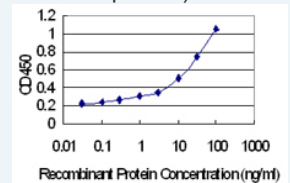
Application Image

Western Blot (Transfected lysate)



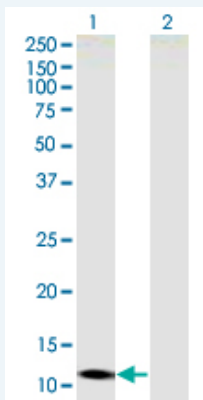
Western Blot (Recombinant protein)

Sandwich ELISA (Recombinant protein)



[enlarge](#)

ELISA



Western Blot analysis of SLC22A18AS expression in transfected 293T cell line by SLC22A18AS monoclonal antibody (M05), clone 4B1.

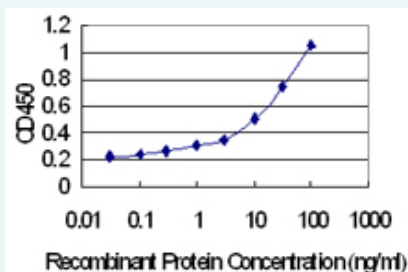
Lane 1: SLC22A18AS transfected lysate (Predicted MW: 15.4 kDa).
Lane 2: Non-transfected lysate.

[Protocol Download](#)

Western Blot (Recombinant protein)

[Protocol Download](#)

Sandwich ELISA (Recombinant protein)



Detection limit for recombinant GST tagged SLC22A18AS is 0.3 ng/ml as a capture antibody.

[Protocol Download](#)

ELISA

Gene Information

Entrez GeneID: [5003](#)

GeneBank [BC030237.1](#)
Accession#:

Protein [AAH30237.1](#)
Accession#:

Gene Name: SLC22A18AS

Gene Alias: BWR1B,BWSCR1B,ORCTL2S,SLC22A1LS,p27-BWR1B

Gene Description: solute carrier family 22 (organic cation transporter), member 18 antisense

Omim ID: [603240](#)

Gene Ontology: [Hyperlink](#)

Other Designations: Beckwith-Wiedemann region 1B,Beckwith-Wiedemann syndrome chromosome region 1, candidate b,organic cation transporter-like 2 antisense,solute carrier family 22 (organic cation transporter), member 1-like antisense

[服務條款](#) | [隱私權政策](#) | [著作及商標](#) | [網站地圖](#)

©2016 亞諾法生技股份有限公司 Abnova Corporation. 版權所有.