



SZABO SCANDIC

Part of Europa Biosite

Produktinformation



Forschungsprodukte & Biochemikalien



Zellkultur & Verbrauchsmaterial



Diagnostik & molekulare Diagnostik



Laborgeräte & Service

Weitere Information auf den folgenden Seiten!
See the following pages for more information!



Lieferung & Zahlungsart

siehe unsere [Liefer- und Versandbedingungen](#)

Zuschläge

- Mindermengenzuschlag
- Trockeneiszuschlag
- Gefahrgutzuschlag
- Expressversand

SZABO-SCANDIC HandelsgmbH

Quellenstraße 110, A-1100 Wien

T. +43(0)1 489 3961-0

F. +43(0)1 489 3961-7

mail@szabo-scandic.com

www.szabo-scandic.com

[linkedin.com/company/szaboscandic](https://www.linkedin.com/company/szaboscandic) 

ORM1 (Human) Matched Antibody Pair

Catalog # : H00005004-AP61

規格 : [1 Set]

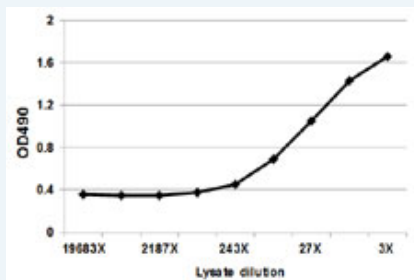
[List All](#)

Specification

Product Description: This antibody pair set comes with matched antibody pair to detect and quantify protein level of human ORM1.

Reactivity: Human

Quality Control Testing: Standard curve using ORM1 293T overexpression lysate (non-denatured) as an analyte.



Sandwich ELISA detection sensitivity ranging from approximately 243x to 9x dilution of the ORM1 293T overexpression lysate (non-denatured).

Supplied Product: Antibody pair set content:
 1. Capture antibody: mouse monoclonal anti-ORM1, IgG1 Kappa (100 ug)
 2. Detection antibody: rabbit MaxPab® affinity purified polyclonal anti-ORM1 (50 ug)
 *Reagents are sufficient for at least 3-5 x 96 well plates using recommended protocols.

Storage Instruction: Store reagents of the antibody pair set at -20°C or lower. Please aliquot to avoid repeated freeze thaw cycle. Reagents should be returned to -20°C storage immediately after use.

MSDS:  [Download](#)

Applications

ELISA Pair (Transfected lysate)

 [Protocol Download](#)

Gene Information

Entrez GeneID: [5004](#)

Gene Name: ORM1

Gene Alias: AGP-A,AGP1,ORM

Gene Description: orosomuroid 1

Omim ID: [138600](#)

Gene Ontology: [Hyperlink](#)

Application Image

ELISA Pair (Transfected lysate)

Gene Summary: This gene encodes a key acute phase plasma protein. Because of its increase due to acute inflammation, this protein is classified as an acute-phase reactant. The specific function of this protein has not yet been determined; however, it may be involved in aspects of immunosuppression. [provided by RefSeq]

Other Designations: OTTHUMP00000022741,Orosomucoid-1 (alpha-1-acid glycoprotein-1),alpha-1-acid glycoprotein 1

Related Disease

[Depressive Disorder](#), [Major Gastrointestinal Stromal Tumors](#)
[Genetic Predisposition to Disease](#) [Leukemia, chronic myeloid](#)
[Leukemia, Myelogenous, Chronic, BCR-ABL Positive](#) [Neovascularization, Pathologic](#)
[Psychiatric Status Rating Scales](#) [Thrombosis](#)

[服務條款](#) | [隱私權政策](#) | [著作及商標](#) | [網站地圖](#)

©2016 亞諾法生技股份有限公司 Abnova Corporation. 版權所有.