



SZABO SCANDIC

Part of Europa Biosite

Produktinformation



Forschungsprodukte & Biochemikalien



Zellkultur & Verbrauchsmaterial



Diagnostik & molekulare Diagnostik



Laborgeräte & Service

Weitere Information auf den folgenden Seiten!
See the following pages for more information!



Lieferung & Zahlungsart

siehe unsere [Liefer- und Versandbedingungen](#)

Zuschläge

- Mindermengenzuschlag
- Trockeneiszuschlag
- Gefahrgutzuschlag
- Expressversand

SZABO-SCANDIC HandelsgmbH

Quellenstraße 110, A-1100 Wien

T. +43(0)1 489 3961-0

F. +43(0)1 489 3961-7

mail@szabo-scandic.com

www.szabo-scandic.com

[linkedin.com/company/szaboscandic](https://www.linkedin.com/company/szaboscandic) 



OSM purified MaxPab rabbit polyclonal antibody (D01P) MaxPab®

Catalog # : H00005008-D01P

規格 : [100 ug]

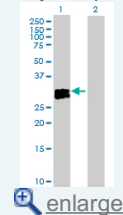
[List All](#)

Specification

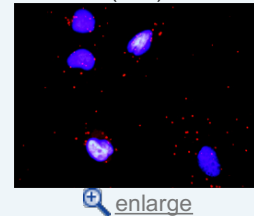
| | |
|---------------------------------|--|
| Product Description: | Rabbit polyclonal antibody raised against a full-length human OSM protein. |
| Immunogen: | OSM (NP_065391.1, 1 a.a. ~ 252 a.a) full-length human protein. |
| Sequence: | MGVLLTQRTLLSLVLALLFPSMASMAAIGSCSKEYRVLLGQLKQTDLM QDTSRLDPYIRIQGLDVPKLRHCRERPGAFPSEETLRGLGRRGFLQT LNATLGCVLHRLADLEQRLPKAQLDRLSGLNIEDLEKLQMARPNILGLRN NIYCMQALLDNSDTAEPTKAGRGASQPPTPTPASDAFQRKLEGCRFLH GYHRFMHSVGRVFSKWGESPNRSRRHSPHQALRKGVRRTTRPSRKGKR LMTRGQLPR |
| Host: | Rabbit |
| Reactivity: | Human |
| Quality Control Testing: | Antibody reactive against mammalian transfected lysate. |
| Storage Buffer: | In 1x PBS, pH 7.4 |
| Storage Instruction: | Store at -20°C or lower. Aliquot to avoid repeated freezing and thawing. |
| MSDS: |  Download |
| Datasheet: |  Download |

Application Image

Western Blot (Transfected lysate)

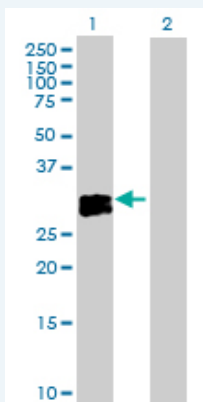


In situ Proximity Ligation Assay (Cell)



Applications

Western Blot (Transfected lysate)

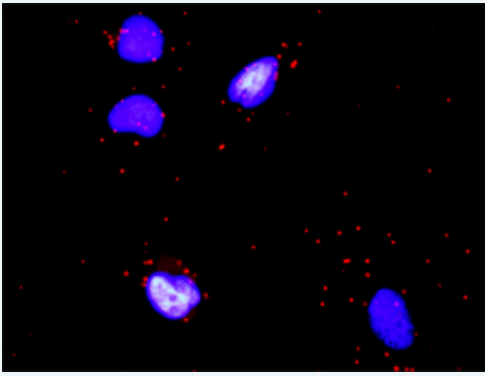


Western Blot analysis of OSM expression in transfected 293T cell line ([H00005008-T02](#)) by OSM MaxPab polyclonal antibody.

Lane 1: OSM transfected lysate(28.50 KDa).
Lane 2: Non-transfected lysate.

 [Protocol Download](#)

In situ Proximity Ligation Assay (Cell)



Proximity Ligation Analysis of protein-protein interactions between OSM and COL4A6. HeLa cells were stained with anti-OSM rabbit purified polyclonal 1:1200 and anti-COL4A6 mouse monoclonal antibody 1:50. Each red dot represents the detection of protein-protein interaction complex, and nuclei were counterstained with DAPI (blue).

Gene Information

Entrez GeneID: [5008](#)

**GeneBank
Accession#:** [NM_020530](#)

**Protein
Accession#:** [NP_065391.1](#)

Gene Name: OSM

Gene Alias: MGC20461

**Gene
Description:** oncostatin M

Omim ID: [165095](#)

Gene Ontology: [Hyperlink](#)

Gene Summary: Oncostatin M is a member of a cytokine family that includes leukemia-inhibitory factor, granulocyte colony-stimulating factor, and interleukin 6. This gene encodes a growth regulator which inhibits the proliferation of a number of tumor cell lines. It regulates cytokine production, including IL-6, G-CSF and GM-CSF from endothelial cells. [provided by RefSeq]

**Other
Designations:** -

Interactome



Gene Pathway

[Cytokine-cytokine receptor interaction](#) [Jak-STAT signaling pathway](#)

Related Disease

[Cardiovascular Diseases](#) [Diabetes Mellitus, Type 2](#) [Edema](#)
[Genetic Predisposition to Disease](#) [Mental Disorders](#)

[服務條款](#) | [隱私權政策](#) | [著作及商標](#) | [網站地圖](#)

©2016 亞諾法生技股份有限公司 Abnova Corporation. 版權所有.