



SZABO SCANDIC

Part of Europa Biosite

Produktinformation



Forschungsprodukte & Biochemikalien



Zellkultur & Verbrauchsmaterial



Diagnostik & molekulare Diagnostik



Laborgeräte & Service

Weitere Information auf den folgenden Seiten!
See the following pages for more information!



Lieferung & Zahlungsart

siehe unsere [Liefer- und Versandbedingungen](#)

Zuschläge

- Mindermengenzuschlag
- Trockeneiszuschlag
- Gefahrgutzuschlag
- Expressversand

SZABO-SCANDIC HandelsgmbH

Quellenstraße 110, A-1100 Wien

T. +43(0)1 489 3961-0

F. +43(0)1 489 3961-7

mail@szabo-scandic.com

www.szabo-scandic.com

[linkedin.com/company/szaboscandic](https://www.linkedin.com/company/szaboscandic) 

OTX1 polyclonal antibody (A01)

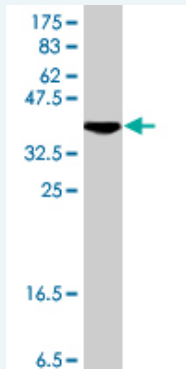
Catalog # : H00005013-A01

規格 : [50 uL]

[List All](#)

Specification

Product Description:	Mouse polyclonal antibody raised against a partial recombinant OTX1.
Immunogen:	OTX1 (NP_055377, 10 a.a. ~ 116 a.a) partial recombinant protein with GST tag.
Sequence:	YGMNGLGLAGPAMDLLHPSVGYPATPRKQRRERTTFTRSQLDVLEALF AKTRYPDIFMREEVALKINLPESRVQWFKNRRRAKCRQQQSGSGTKS RPAKKKSSPVR
Host:	Mouse
Reactivity:	Human, Mouse
Quality Control Testing:	Antibody Reactive Against Recombinant Protein.



Western Blot detection against Immunogen (37.88 kDa) .

Storage Buffer: 50 % glycerol

Storage Instruction: Store at -20°C or lower. Aliquot to avoid repeated freezing and thawing.

MSDS: [Download](#)

Datasheet: [Download](#)

Publication Reference

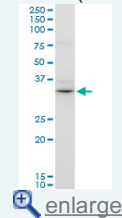
- [Murine Embryonic Stem Cell-Derived Pyramidal Neurons Integrate into the Cerebral Cortex and Appropriately Project Axons to Subcortical Targets.](#)
Ideguchi M, Palmer TD, Recht LD, Weimann JM. J Neurosci. 2010 Jan 20;30(3):894-904.
- [Expression of the homeobox genes PAX6, OTX2, and OTX1 in the early human fetal Retina.](#)
Larsen KB, Lutterodt M, Rath MF, Moller M. Int J Dev Neurosci. 2009 Aug;27(5):485-92. Epub 2009 May 3.

Applications

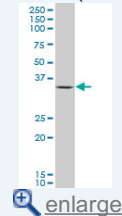
Western Blot (Cell lysate)

Application Image

Western Blot (Cell lysate)

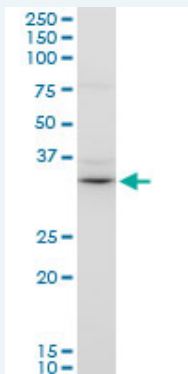


Western Blot (Cell lysate)



Western Blot (Recombinant protein)

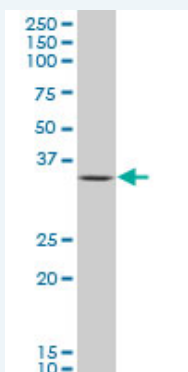
ELISA




OTX1 polyclonal antibody (A01), Lot # MAI0060316QCS1. Western Blot analysis of OTX1 expression in Raw 264.7.

 [Protocol Download](#)

Western Blot (Cell lysate)



OTX1 polyclonal antibody (A01), Lot # MAI0060316QCS1 Western Blot analysis of OTX1 expression in Jurkat (Cat # L017V1).

 [Protocol Download](#)

Western Blot (Recombinant protein)

 [Protocol Download](#)

ELISA

Gene Information

Entrez GeneID: [5013](#)

GeneBank Accession#: [NM_014562](#)

Protein Accession#: [NP_055377](#)

Gene Name: OTX1

Gene Alias: FLJ38361,MGC15736

Gene Description: orthodenticle homeobox 1

Omim ID: [600036](#)

Gene Ontology: [Hyperlink](#)

Gene Summary: This gene encodes a member of the bicoid sub-family of homeodomain-containing transcription factors. The encoded protein acts as a transcription factor and may play a role in brain and sensory organ development. A similar protein in mice is required for proper brain and sensory organ development and can cause epilepsy. [provided by RefSeq]

Other homeobox protein OTX1,orthodenticle homolog 1
Designations:

Related Disease

Mental Disorders Schizophrenia

[服務條款](#) | [隱私權政策](#) | [著作及商標](#) | [網站地圖](#)

©2016 亞諾法生技股份有限公司 Abnova Corporation. 版權所有.