



SZABO SCANDIC

Part of Europa Biosite

Produktinformation



Forschungsprodukte & Biochemikalien



Zellkultur & Verbrauchsmaterial



Diagnostik & molekulare Diagnostik



Laborgeräte & Service

Weitere Information auf den folgenden Seiten!
See the following pages for more information!



Lieferung & Zahlungsart

siehe unsere [Liefer- und Versandbedingungen](#)

Zuschläge

- Mindermengenzuschlag
- Trockeneiszuschlag
- Gefahrgutzuschlag
- Expressversand

SZABO-SCANDIC HandelsgmbH

Quellenstraße 110, A-1100 Wien

T. +43(0)1 489 3961-0

F. +43(0)1 489 3961-7

mail@szabo-scandic.com

www.szabo-scandic.com

[linkedin.com/company/szaboscandic](https://www.linkedin.com/company/szaboscandic) 

OTX1 monoclonal antibody (M01), clone 1F2

Catalog # : H00005013-M01

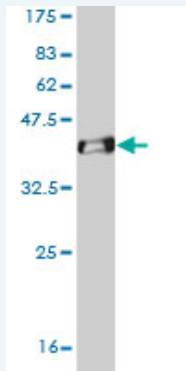
規格 : [100 ug]

[List All](#)

Specification

Product Description:	Mouse monoclonal antibody raised against a partial recombinant OTX1.
Immunogen:	OTX1 (NP_055377, 10 a.a. ~ 116 a.a) partial recombinant protein with GST tag. MW of the GST tag alone is 26 KDa.
Sequence:	YGMNGLGLAGPAMDLLHPSVGYPATPRKQRRERTTFTRSQLDVLEALF AKTRYPDIFMREEVALKINLPESRVQWFKNRRRAKCRQQQSGSGTKS RPAKKKSSPVR
Host:	Mouse
Reactivity:	Human
Isotype:	IgG2a Kappa

Quality Control Testing: Antibody Reactive Against Recombinant Protein.



Western Blot detection against Immunogen (37.51 KDa) .

Storage Buffer: In 1x PBS, pH 7.4

Storage Instruction: Store at -20°C or lower. Aliquot to avoid repeated freezing and thawing.

MSDS: [Download](#)

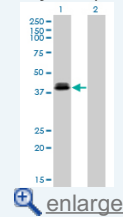
Datasheet: [Download](#)

Applications

Western Blot (Transfected lysate)

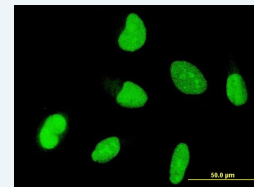
Application Image

Western Blot (Transfected lysate)

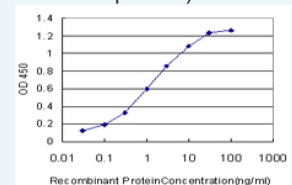


Western Blot (Recombinant protein)

Immunofluorescence

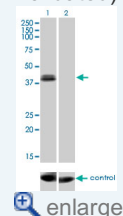


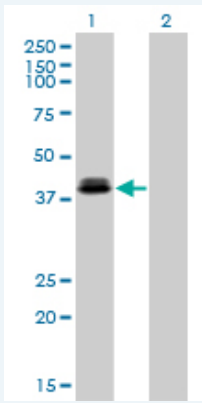
Sandwich ELISA (Recombinant protein)



ELISA

RNAi Knockdown (Antibody validated)





Western Blot analysis of OTX1 expression in transfected 293T cell line by OTX1 monoclonal antibody (M01), clone 1F2.

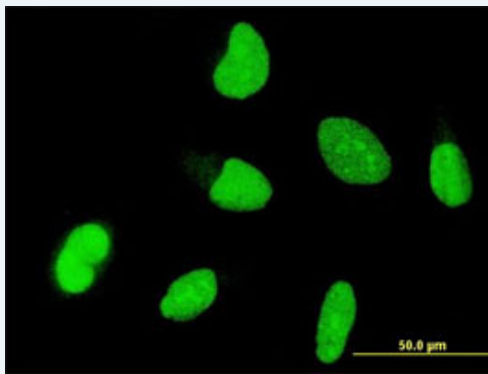
Lane 1: OTX1 transfected lysate (37.3 KDa).
Lane 2: Non-transfected lysate.

[Protocol Download](#)

Western Blot (Recombinant protein)

[Protocol Download](#)

Immunofluorescence

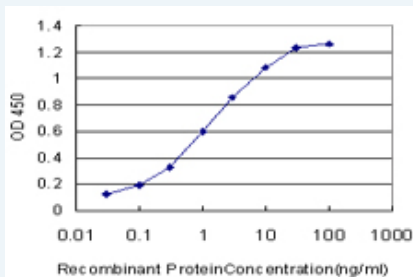


[enlarge this image](#)

Immunofluorescence of monoclonal antibody to OTX1 on HeLa cell . [antibody concentration 10 ug/ml]

[Protocol Download](#)

Sandwich ELISA (Recombinant protein)

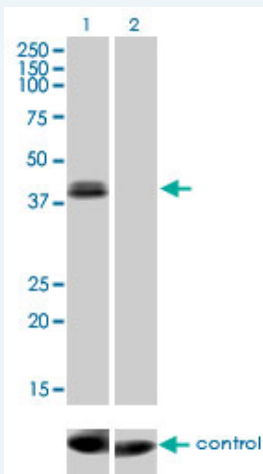


Detection limit for recombinant GST tagged OTX1 is approximately 0.03ng/ml as a capture antibody.


[Protocol Download](#)

ELISA

RNAi Knockdown (Antibody validated)



Western blot analysis of OTX1 over-expressed 293 cell line, cotransfected with OTX1 Validated Chimera RNAi (Cat # H00005013-R01V) (Lane 2) or non-transfected control (Lane 1). Blot probed with OTX1 monoclonal antibody (M01), clone 1F2 (Cat # H00005013-M01). GAPDH (36.1 kDa) used as specificity and loading control.

 [Protocol Download](#)

Gene Information

Entrez GeneID: [5013](#)

GeneBank [NM_014562](#)

Accession#:

Protein [NP_055377](#)

Accession#:

Gene Name: OTX1

Gene Alias: FLJ38361,MGC15736

Gene orthodenticle homeobox 1

Description:

Omim ID: [600036](#)

Gene Ontology: [Hyperlink](#)

Gene Summary: This gene encodes a member of the bicoid sub-family of homeodomain-containing transcription factors. The encoded protein acts as a transcription factor and may play a role in brain and sensory organ development. A similar protein in mice is required for proper brain and sensory organ development and can cause epilepsy. [provided by RefSeq]

Other homeobox protein OTX1,orthodenticle homolog 1

Designations:

Related Disease

[Mental Disorders](#) [Schizophrenia](#)