



SZABO SCANDIC

Part of Europa Biosite

Produktinformation



Forschungsprodukte & Biochemikalien



Zellkultur & Verbrauchsmaterial



Diagnostik & molekulare Diagnostik



Laborgeräte & Service

Weitere Information auf den folgenden Seiten!
See the following pages for more information!



Lieferung & Zahlungsart

siehe unsere [Liefer- und Versandbedingungen](#)

Zuschläge

- Mindermengenzuschlag
- Trockeneiszuschlag
- Gefahrgutzuschlag
- Expressversand

SZABO-SCANDIC HandelsgmbH

Quellenstraße 110, A-1100 Wien

T. +43(0)1 489 3961-0

F. +43(0)1 489 3961-7

mail@szabo-scandic.com

www.szabo-scandic.com

[linkedin.com/company/szaboscandic](https://www.linkedin.com/company/szaboscandic) 

P2RY1 polyclonal antibody (A01)

Catalog # : H00005028-A01

規格 : [50 uL]

List All

Specification

Product Description: Mouse polyclonal antibody raised against a partial recombinant P2RY1.

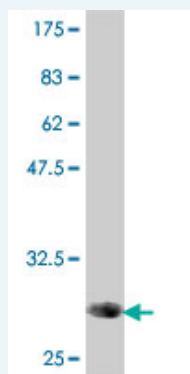
Immunogen: P2RY1 (NP_002554, 1 a.a. ~ 52 a.a) partial recombinant protein with GST tag.

Sequence: MTEVLWPAVPNGTDA AFLAGPGSSWGNSTVASTAAVSSSFKCALTKTG FQFY

Host: Mouse

Reactivity: Human

Quality Control Testing: Antibody Reactive Against Recombinant Protein.



Western Blot detection against Immunogen (31.83 KDa) .

Storage Buffer: 50 % glycerol

Storage Instruction: Store at -20°C or lower. Aliquot to avoid repeated freezing and thawing.

MSDS:  [Download](#)

Datasheet:  [Download](#)

Applications

Western Blot (Recombinant protein)

 [Protocol Download](#)

ELISA

Gene Information

Entrez GeneID: [5028](#)

GeneBank Accession#: [NM_002563](#)

Protein [NP_002554](#)

Accession#:

Gene Name: P2RY1

Gene Alias: P2Y1

Gene Description: purinergic receptor P2Y, G-protein coupled, 1

Omim ID: [601167](#)

Gene Ontology: [Hyperlink](#)

Gene Summary: The product of this gene belongs to the family of G-protein coupled receptors. This family has several receptor subtypes with different pharmacological selectivity, which overlaps in some cases, for various adenosine and uridine nucleotides. This receptor functions as a receptor for extracellular ATP and ADP. In platelets binding to ADP leads to mobilization of intracellular calcium ions via activation of phospholipase C, a change in platelet shape, and probably to platelet aggregation. [provided by RefSeq]

Other Designations: ATP receptor,P2 purinoceptor subtype Y1,P2Y purinoceptor 1,platelet ADP receptor,purinergic receptor P2Y1

Gene Pathway

[Neuroactive ligand-receptor interaction](#)

Related Disease

[Atherosclerosis](#) [Cardiovascular Diseases](#) [Coronary Disease](#) [Diabetes Mellitus, Type 2](#)
[Edema](#) [HIV Infections](#) [Vascular Diseases](#)

[服務條款](#) | [隱私權政策](#) | [著作及商標](#) | [網站地圖](#)

©2016 亞諾法生技股份有限公司 Abnova Corporation. 版權所有.