



# SZABO SCANDIC

Part of Europa Biosite

## Produktinformation



Forschungsprodukte & Biochemikalien



Zellkultur & Verbrauchsmaterial



Diagnostik & molekulare Diagnostik



Laborgeräte & Service

Weitere Information auf den folgenden Seiten!  
See the following pages for more information!



### Lieferung & Zahlungsart

siehe unsere [Liefer- und Versandbedingungen](#)

### Zuschläge

- Mindermengenzuschlag
- Trockeneiszuschlag
- Gefahrgutzuschlag
- Expressversand

### SZABO-SCANDIC HandelsgmbH

Quellenstraße 110, A-1100 Wien

T. +43(0)1 489 3961-0

F. +43(0)1 489 3961-7

[mail@szabo-scandic.com](mailto:mail@szabo-scandic.com)

[www.szabo-scandic.com](http://www.szabo-scandic.com)

[linkedin.com/company/szaboscandic](https://www.linkedin.com/company/szaboscandic) 

## P2RY1 monoclonal antibody (M01), clone 4C2

Catalog # : H00005028-M01

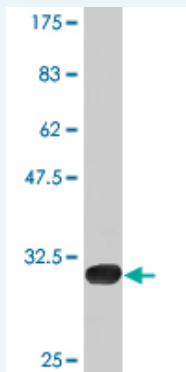
規格 : [ 100 ug ]

[List All](#)

### Specification

<b>Product Description:</b>	Mouse monoclonal antibody raised against a partial recombinant P2RY1.
<b>Immunogen:</b>	P2RY1 (NP_002554, 1 a.a. ~ 52 a.a) partial recombinant protein with GST tag. MW of the GST tag alone is 26 KDa.
<b>Sequence:</b>	MTEVLWPAVPNGTDAFLAGPGSSWGNSTVASTAAVSSSFKCALTKTG FQFY
<b>Host:</b>	Mouse
<b>Reactivity:</b>	Human
<b>Isotype:</b>	IgG2a Kappa

**Quality Control Testing:** Antibody Reactive Against Recombinant Protein.



Western Blot detection against Immunogen (31.46 KDa) .

**Storage Buffer:** In 1x PBS, pH 7.4

**Storage Instruction:** Store at -20°C or lower. Aliquot to avoid repeated freezing and thawing.

**MSDS:** [Download](#)

**Datasheet:** [Download](#)

### Publication Reference

1. [Altered Distribution of Small-Conductance Calcium-Activated Potassium Channel Sk3 In Hirschsprung's Disease.](#)  
Coyle D, O'Donnell AM, Puri P. Journal of Pediatric Surgery  
doi:10.1016/j.jpedsurg.2015.01.013

### Applications

**Western Blot (Recombinant protein)**

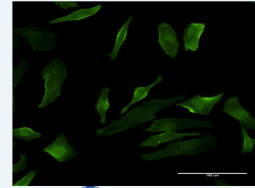
[Protocol Download](#)

**Immunofluorescence**

### Application Image

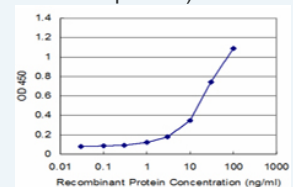
Western Blot (Recombinant protein)

Immunofluorescence



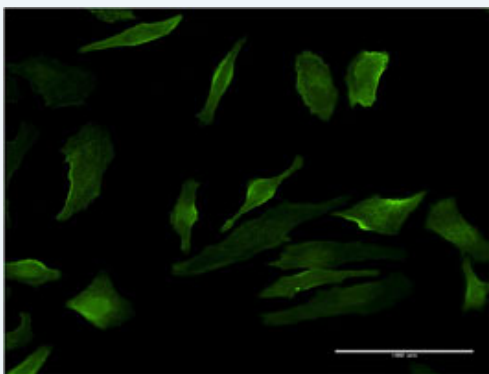
[enlarge](#)

Sandwich ELISA (Recombinant protein)



[enlarge](#)

ELISA

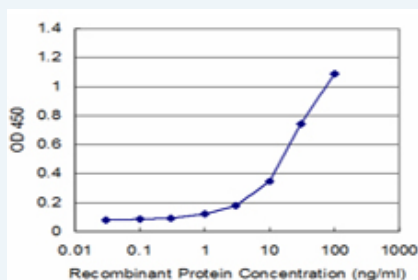


[enlarge this image](#)

Immunofluorescence of monoclonal antibody to P2RY1 on HeLa cell . [antibody concentration 10 ug/ml]

[Protocol Download](#)

### Sandwich ELISA (Recombinant protein)



Detection limit for recombinant GST tagged P2RY1 is approximately 1ng/ml as a capture antibody.

[Protocol Download](#)

### ELISA

### Gene Information

Entrez GeneID: [5028](#)

GeneBank Accession#: [NM\\_002563](#)

Protein Accession#: [NP\\_002554](#)

Gene Name: P2RY1

Gene Alias: P2Y1

Gene Description: purinergic receptor P2Y, G-protein coupled, 1

Omim ID: [601167](#)

Gene Ontology: [Hyperlink](#)

**Gene Summary:** The product of this gene belongs to the family of G-protein coupled receptors. This family has several receptor subtypes with different pharmacological selectivity, which overlaps in some cases, for various adenosine and uridine nucleotides. This receptor functions as a receptor for extracellular ATP and ADP. In platelets binding to ADP leads to mobilization of intracellular calcium ions via activation of phospholipase C, a change in platelet shape, and probably to platelet aggregation. [provided by RefSeq]

**Other Designations:** ATP receptor,P2 purinoceptor subtype Y1,P2Y purinoceptor 1,platelet ADP receptor,purinergic receptor P2Y1

## Gene Pathway

---

[Neuroactive ligand-receptor interaction](#)

## Related Disease

---

[Atherosclerosis](#) [Cardiovascular Diseases](#) [Coronary Disease](#) [Diabetes Mellitus, Type 2](#)  
[Edema](#) [HIV Infections](#) [Vascular Diseases](#)

---

[服務條款](#) | [隱私權政策](#) | [著作及商標](#) | [網站地圖](#)

©2016 亞諾法生技股份有限公司 Abnova Corporation. 版權所有.