



# SZABO SCANDIC

Part of Europa Biosite

## Produktinformation



Forschungsprodukte & Biochemikalien



Zellkultur & Verbrauchsmaterial



Diagnostik & molekulare Diagnostik



Laborgeräte & Service

Weitere Information auf den folgenden Seiten!  
See the following pages for more information!



### Lieferung & Zahlungsart

siehe unsere [Liefer- und Versandbedingungen](#)

### Zuschläge

- Mindermengenzuschlag
- Trockeneiszuschlag
- Gefahrgutzuschlag
- Expressversand

### SZABO-SCANDIC HandelsgmbH

Quellenstraße 110, A-1100 Wien

T. +43(0)1 489 3961-0

F. +43(0)1 489 3961-7

[mail@szabo-scandic.com](mailto:mail@szabo-scandic.com)

[www.szabo-scandic.com](http://www.szabo-scandic.com)

[linkedin.com/company/szaboscandic](https://www.linkedin.com/company/szaboscandic) 

## PCSK6 polyclonal antibody (A01)

Catalog # : H00005046-A01

規格 : [ 50 uL ]

[List All](#)

### Specification

**Product Description:** Mouse polyclonal antibody raised against a partial recombinant PCSK6.

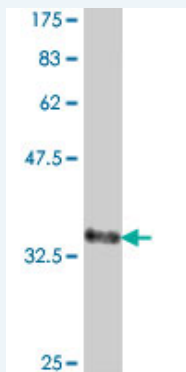
**Immunogen:** PCSK6 (NP\_002561, 860 a.a. ~ 969 a.a) partial recombinant protein with GST tag.

**Sequence:** REECIHCAKNFHFHDWKCVACGEGFYPEEMPGLPHKVCRRCDENCLS  
CAGSSRNCSRCKTGFTQLGTSCITNHTCSNADETFCEMVKSNRLCERKL  
FIQFCRTCLLAG

**Host:** Mouse

**Reactivity:** Human, Mouse, Rat

**Quality Control Testing:** Antibody Reactive Against Recombinant Protein.



Western Blot detection against Immunogen (38.21 kDa) .

**Storage Buffer:** 50 % glycerol

**Storage Instruction:** Store at -20°C or lower. Aliquot to avoid repeated freezing and thawing.

**MSDS:** [Download](#)

**Datasheet:** [Download](#)

### Publication Reference

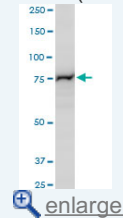
1. EXTRACELLULAR AND MEMBRANE-ASSOCIATED PROSTATE CANCER MARKERS  
Klee, George G. ;Vasmatzis, George;Kosari, Farhad;Klee, Eric W.FreshPatents.com

### Applications

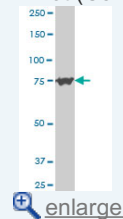
Western Blot (Cell lysate)

### Application Image

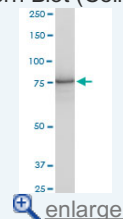
Western Blot (Cell lysate)



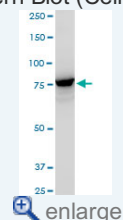
Western Blot (Cell lysate)



Western Blot (Cell lysate)

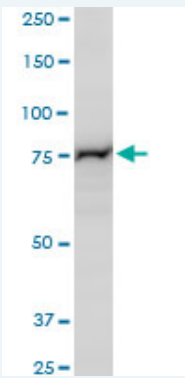


Western Blot (Cell lysate)



Western Blot (Recombinant protein)

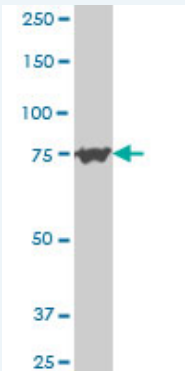
ELISA



PCSK6 polyclonal antibody (A01), Lot # FIS28060515QCS1. Western Blot analysis of PCSK6 expression in PC-12.

 [Protocol Download](#)

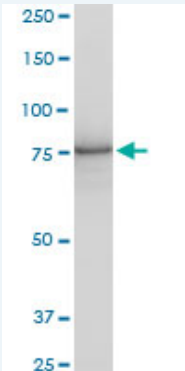
**Western Blot (Cell lysate)**



PCSK6 polyclonal antibody (A01), Lot # FIS28060515QCS1 Western Blot analysis of PCSK6 expression in HeLa S3 NE ( Cat # L013V3 ).

 [Protocol Download](#)

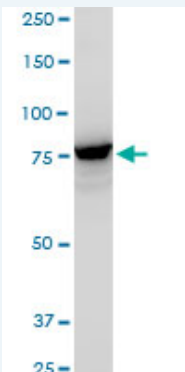
**Western Blot (Cell lysate)**




PCSK6 polyclonal antibody (A01), Lot # FIS28060515QCS1. Western Blot analysis of PCSK6 expression in Raw 264.7.

 [Protocol Download](#)

**Western Blot (Cell lysate)**



PCSK6 polyclonal antibody (A01), Lot # FIS28060515QCS1. Western Blot analysis of PCSK6 expression in NIH/3T3.

 [Protocol Download](#)

---

**Western Blot (Recombinant protein)**

 [Protocol Download](#)

---

**ELISA**

---

**Gene Information**

---

**Entrez GeneID:** [5046](#)

---

**GeneBank Accession#:** [NM\\_002570](#)

---

**Protein Accession#:** [NP\\_002561](#)

---

**Gene Name:** PCSK6

---

**Gene Alias:** PACE4,SPC4

---

**Gene Description:** proprotein convertase subtilisin/kexin type 6

---

**Omim ID:** [167405](#)

---

**Gene Ontology:** [Hyperlink](#)

---

**Gene Summary:** The protein encoded by this gene belongs to the subtilisin-like proprotein convertase family. The members of this family are proprotein convertases that process latent precursor proteins into their biologically active products. This encoded protein is a calcium-dependent serine endoprotease that can cleave precursor protein at their paired basic amino acid processing sites. Some of its substrates are - transforming growth factor beta related proteins, proalbumin, and von Willebrand factor. This gene is thought to play a role in tumor progression. Alternatively spliced transcript variants encoding different isoforms have been identified. [provided by RefSeq]

---

**Other Designations:** paired basic amino acid cleaving system 4,subtilisin-like proprotein convertase 4,subtilisin-like protease,subtilisin/kexin-like protease PACE4

---

**Related Disease**

---

[Cardiovascular Diseases](#) [Diabetes Mellitus, Type 2](#) [Edema](#) [Tobacco Use Disorder](#)

---

[服務條款](#) | [隱私權政策](#) | [著作及商標](#) | [網站地圖](#)

©2016 亞諾法生技股份有限公司 Abnova Corporation. 版權所有.