



SZABO SCANDIC

Part of Europa Biosite

Produktinformation



Forschungsprodukte & Biochemikalien



Zellkultur & Verbrauchsmaterial



Diagnostik & molekulare Diagnostik



Laborgeräte & Service

Weitere Information auf den folgenden Seiten!
See the following pages for more information!



Lieferung & Zahlungsart

siehe unsere [Liefer- und Versandbedingungen](#)

Zuschläge

- Mindermengenzuschlag
- Trockeneiszuschlag
- Gefahrgutzuschlag
- Expressversand

SZABO-SCANDIC HandelsgmbH

Quellenstraße 110, A-1100 Wien

T. +43(0)1 489 3961-0

F. +43(0)1 489 3961-7

mail@szabo-scandic.com

www.szabo-scandic.com

[linkedin.com/company/szaboscandic](https://www.linkedin.com/company/szaboscandic) 



PAEP MaxPab mouse polyclonal antibody (B01) MaxPab®

Catalog # : H00005047-B01

規格 : [50 uL]

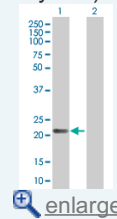
[List All](#)

Specification

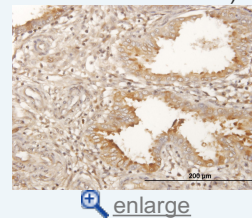
Product Description:	Mouse polyclonal antibody raised against a full-length human PAEP protein.
Immunogen:	PAEP (NP_002562.2, 1 a.a. ~ 180 a.a) full-length human protein.
Sequence:	MLCLLLTLGVALVCGVPAMDIPQTKQDLELPKLAGTWHSMAMATNNISL MATLKAPLRVHITSLLPEDNLEIVLHRWENNNSCVEKKVLGEKTENPKKF KINYTVANEATLLD TDYDNFLFLCLQDTTTPIQSMQCQYLARVLVEDDEI MQGFIRAFRPLPRHLWYLLDLKQMEEPCRF
Host:	Mouse
Reactivity:	Human
Quality Control Testing:	Antibody reactive against mammalian transfected lysate.
Storage Buffer:	No additive
Storage Instruction:	Store at -20°C or lower. Aliquot to avoid repeated freezing and thawing.
Note:	For IHC and IF applications, antibody purification with Protein A will be needed prior to use.
MSDS:	 Download
Datasheet:	 Download

Application Image

Western Blot (Transfected lysate)

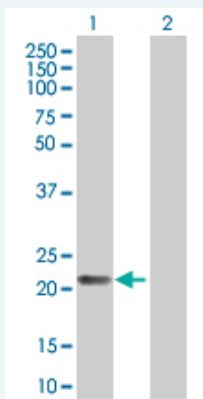


Immunohistochemistry (Formalin/PFA-fixed paraffin-embedded sections)




Applications

Western Blot (Transfected lysate)

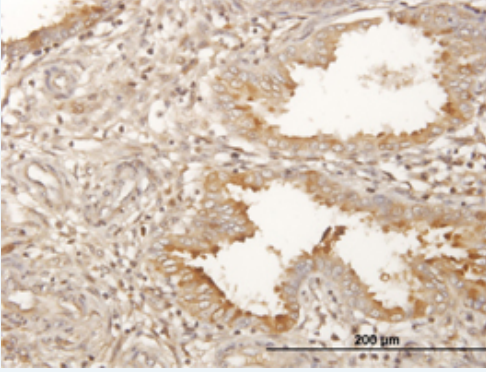


Western Blot analysis of PAEP expression in transfected 293T cell line (H00005047-T01) by PAEP MaxPab polyclonal antibody.

Lane 1: PAEP transfected lysate(19.8 KDa).
Lane 2: Non-transfected lysate.

 [Protocol Download](#)

Immunohistochemistry (Formalin/PFA-fixed paraffin-embedded sections)



[enlarge this image](#)

Immunoperoxidase of purified MaxPab antibody to PAEP on formalin-fixed paraffin-embedded human endometrium. [antibody concentration 3 ug/ml]

[Protocol Download](#)

Gene Information

Entrez GeneID: [5047](#)

GeneBank Accession#: [NM_002571.2](#)

Protein Accession#: [NP_002562.2](#)

Gene Name: PAEP

Gene Alias: GD,GdA,GdF,GdS,MGC138509,MGC142288,PAEG,PEP,PP14

Gene Description: progestagen-associated endometrial protein

Omim ID: [173310](#)

Gene Ontology: [Hyperlink](#)

Gene Summary: This gene is a member of the kernel lipocalin superfamily whose members share relatively low sequence similarity but have highly conserved exon/intron structure and three-dimensional protein folding. Most lipocalins are clustered on the long arm of chromosome 9. The encoded glycoprotein has been previously referred to as pregnancy-associated endometrial alpha-2-globulin, placental protein 14, and glycodelin, but has been officially named progestagen-associated endometrial protein. Three distinct forms, with identical protein backbones but different glycosylation profiles, are found in amniotic fluid, follicular fluid and seminal plasma of the reproductive system. These glycoproteins have distinct and essential roles in regulating a uterine environment suitable for pregnancy and in the timing and occurrence of the appropriate sequence of events in the fertilization process. A number of alternatively spliced transcript variants have been observed at this locus, but the full-length nature of only two, each encoding the same protein, has been determined. [provided by RefSeq]

Other Designations: OTTHUMP00000022548,OTTHUMP00000022549,OTTHUMP00000022550,PP14 protein (placental protein 14),alpha uterine protein,glycodelin,glycodelin-A,glycodelin-F,glycodelin-S,pregnancy-associated endometrial alpha-2-globulin,progesterone-associated endometrial prot