



# SZABO SCANDIC

Part of Europa Biosite

## Produktinformation



Forschungsprodukte & Biochemikalien



Zellkultur & Verbrauchsmaterial



Diagnostik & molekulare Diagnostik



Laborgeräte & Service

Weitere Information auf den folgenden Seiten!  
See the following pages for more information!



### Lieferung & Zahlungsart

siehe unsere [Liefer- und Versandbedingungen](#)

### Zuschläge

- Mindermengenzuschlag
- Trockeneiszuschlag
- Gefahrgutzuschlag
- Expressversand

### SZABO-SCANDIC HandelsgmbH

Quellenstraße 110, A-1100 Wien

T. +43(0)1 489 3961-0

F. +43(0)1 489 3961-7

[mail@szabo-scandic.com](mailto:mail@szabo-scandic.com)

[www.szabo-scandic.com](http://www.szabo-scandic.com)

[linkedin.com/company/szaboscandic](https://www.linkedin.com/company/szaboscandic) 



**PAEP purified MaxPab rabbit polyclonal antibody (D01P)** MaxPab®

Catalog # : H00005047-D01P

規格 : [ 100 ug ]

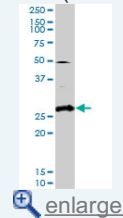
[List All](#)

**Specification**

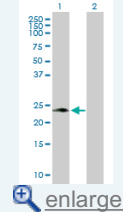
<b>Product Description:</b>	Rabbit polyclonal antibody raised against a full-length human PAEP protein.
<b>Immunogen:</b>	PAEP (NP_002562.2, 1 a.a. ~ 180 a.a) full-length human protein.
<b>Sequence:</b>	MLCLLLTLGVALVCGVPAMDIPQTKQDLELPKLAGTWHSMAMATNNISL MATLKAPLRVHITSLLPEDNLEIVLHRWENNNSCVEKKVLGEKTENPKKF KINYTVANEATLLD TDYDNFLFLCLQD TTTPIQSM MCQYLARVLVEDDEI MQGFIRAFRPLPRHLWYLLDLKQMEEPCRF
<b>Host:</b>	Rabbit
<b>Reactivity:</b>	Human
<b>Quality Control Testing:</b>	Antibody reactive against mammalian transfected lysate.
<b>Storage Buffer:</b>	In 1x PBS, pH 7.4
<b>Storage Instruction:</b>	Store at -20°C or lower. Aliquot to avoid repeated freezing and thawing.
<b>MSDS:</b>	 <a href="#">Download</a>
<b>Datasheet:</b>	 <a href="#">Download</a>

**Application Image**

Western Blot (Tissue lysate)

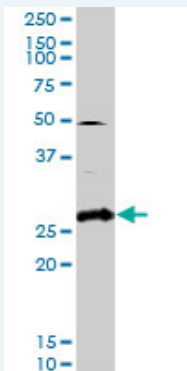


Western Blot (Transfected lysate)



**Applications**

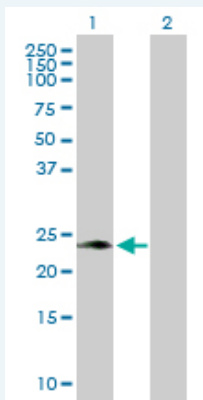
Western Blot (Tissue lysate)



PAEP MaxPab rabbit polyclonal antibody. Western Blot analysis of PAEP expression in human placenta.

 [Protocol Download](#)

Western Blot (Transfected lysate)



Western Blot analysis of PAEP expression in transfected 293T cell line ([H00005047-T02](#)) by PAEP MaxPab polyclonal antibody.

Lane 1: PAEP transfected lysate(20.60 KDa).  
Lane 2: Non-transfected lysate.

 [Protocol Download](#)

### Gene Information

**Entrez GeneID:** [5047](#)

**GeneBank Accession#:** [NM\\_002571.2](#)

**Protein Accession#:** [NP\\_002562.2](#)

**Gene Name:** PAEP

**Gene Alias:** GD,GdA,GdF,GdS,MGC138509,MGC142288,PAEG,PEP,PP14

**Gene Description:** progestagen-associated endometrial protein

**Omim ID:** [173310](#)

**Gene Ontology:** [Hyperlink](#)

**Gene Summary:** This gene is a member of the kernel lipocalin superfamily whose members share relatively low sequence similarity but have highly conserved exon/intron structure and three-dimensional protein folding. Most lipocalins are clustered on the long arm of chromosome 9. The encoded glycoprotein has been previously referred to as pregnancy-associated endometrial alpha-2-globulin, placental protein 14, and glycodelin, but has been officially named progestagen-associated endometrial protein. Three distinct forms, with identical protein backbones but different glycosylation profiles, are found in amniotic fluid, follicular fluid and seminal plasma of the reproductive system. These glycoproteins have distinct and essential roles in regulating a uterine environment suitable for pregnancy and in the timing and occurrence of the appropriate sequence of events in the fertilization process. A number of alternatively spliced transcript variants have been observed at this locus, but the full-length nature of only two, each encoding the same protein, has been determined. [provided by RefSeq]

**Other Designations:** OTTHUMP00000022548,OTTHUMP00000022549,OTTHUMP00000022550,PP14 protein (placental protein 14),alpha uterine protein,glycodelin,glycodelin-A,glycodelin-F,glycodelin-S,pregnancy-associated endometrial alpha-2-globulin,progesterone-associated endometrial prot

