



SZABO SCANDIC

Part of Europa Biosite

Produktinformation



Forschungsprodukte & Biochemikalien



Zellkultur & Verbrauchsmaterial



Diagnostik & molekulare Diagnostik



Laborgeräte & Service

Weitere Information auf den folgenden Seiten!
See the following pages for more information!



Lieferung & Zahlungsart

siehe unsere [Liefer- und Versandbedingungen](#)

Zuschläge

- Mindermengenzuschlag
- Trockeneiszuschlag
- Gefahrgutzuschlag
- Expressversand

SZABO-SCANDIC HandelsgmbH

Quellenstraße 110, A-1100 Wien

T. +43(0)1 489 3961-0

F. +43(0)1 489 3961-7

mail@szabo-scandic.com

www.szabo-scandic.com

[linkedin.com/company/szaboscandic](https://www.linkedin.com/company/szaboscandic) 

PAEP monoclonal antibody (M02), clone 4E4

Catalog # : H00005047-M02

規格 : [100 ug]

[List All](#)

Specification

Product Description: Mouse monoclonal antibody raised against a partial recombinant PAEP.

Immunogen: PAEP (NP_002562, 53 a.a. ~ 162 a.a) partial recombinant protein with GST tag. MW of the GST tag alone is 26 KDa.

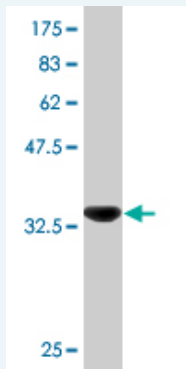
Sequence: NLEIVLHRWENNSCVEKKVLGEKTENPKKFKINYTVANEATLLDTDYDNFL
FLCLQDTTTPIQSMMQYLARVLVEDDEIMQGFIRAFRPLPRHLWYLLDL
KQMEEPCRF

Host: Mouse

Reactivity: Human

Isotype: IgG1 Lambda

Quality Control Testing: Antibody Reactive Against Recombinant Protein.



Western Blot detection against Immunogen (37.84 KDa) .

Storage Buffer: In 1x PBS, pH 7.4

Storage Instruction: Store at -20°C or lower. Aliquot to avoid repeated freezing and thawing.

MSDS: [Download](#)

Datasheet: [Download](#)

Applications

Western Blot (Recombinant protein)

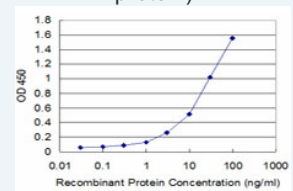
[Protocol Download](#)

Sandwich ELISA (Recombinant protein)

Application Image

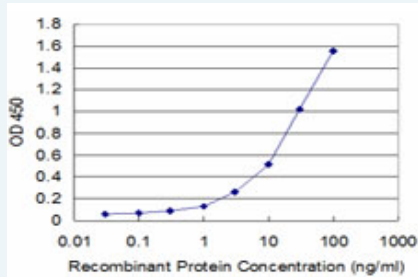
Western Blot (Recombinant protein)

Sandwich ELISA (Recombinant protein)



[enlarge](#)

ELISA



Detection limit for recombinant GST tagged PAEP is approximately 0.3ng/ml as a capture antibody.

 [Protocol Download](#)

ELISA

Gene Information

Entrez GeneID: [5047](#)

GeneBank [NM_002571](#)

Accession#:

Protein [NP_002562](#)

Accession#:

Gene Name: PAEP

Gene Alias: GD,GdA,GdF,GdS,MGC138509,MGC142288,PAEG,PEP,PP14

Gene Description: progesterone-associated endometrial protein

Omim ID: [173310](#)

Gene Ontology: [Hyperlink](#)

Gene Summary: This gene is a member of the kernel lipocalin superfamily whose members share relatively low sequence similarity but have highly conserved exon/intron structure and three-dimensional protein folding. Most lipocalins are clustered on the long arm of chromosome 9. The encoded glycoprotein has been previously referred to as pregnancy-associated endometrial alpha-2-globulin, placental protein 14, and glycodelin, but has been officially named progesterone-associated endometrial protein. Three distinct forms, with identical protein backbones but different glycosylation profiles, are found in amniotic fluid, follicular fluid and seminal plasma of the reproductive system. These glycoproteins have distinct and essential roles in regulating a uterine environment suitable for pregnancy and in the timing and occurrence of the appropriate sequence of events in the fertilization process. A number of alternatively spliced transcript variants have been observed at this locus, but the full-length nature of only two, each encoding the same protein, has been determined. [provided by RefSeq]

Other Designations: OTTHUMP00000022548,OTTHUMP00000022549,OTTHUMP00000022550,PP14 protein (placental protein 14),alpha uterine protein,glycodelin,glycodelin-A,glycodelin-F,glycodelin-S,pregnancy-associated endometrial alpha-2-globulin,progesterone-associated endometrial prot