



SZABO SCANDIC

Part of Europa Biosite

Produktinformation



Forschungsprodukte & Biochemikalien



Zellkultur & Verbrauchsmaterial



Diagnostik & molekulare Diagnostik



Laborgeräte & Service

Weitere Information auf den folgenden Seiten!
See the following pages for more information!



Lieferung & Zahlungsart

siehe unsere [Liefer- und Versandbedingungen](#)

Zuschläge

- Mindermengenzuschlag
- Trockeneiszuschlag
- Gefahrgutzuschlag
- Expressversand

SZABO-SCANDIC HandelsgmbH

Quellenstraße 110, A-1100 Wien

T. +43(0)1 489 3961-0

F. +43(0)1 489 3961-7

mail@szabo-scandic.com

www.szabo-scandic.com

[linkedin.com/company/szaboscandic](https://www.linkedin.com/company/szaboscandic) 

PAFAH1B1 monoclonal antibody (M01), clone 2C12

產品編號 # : H00005048-M01

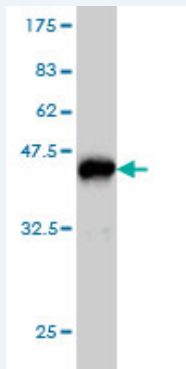
規格 : [100 ug]

[List All](#)

Specification

Product Description:	Mouse monoclonal antibody raised against a partial recombinant PAFAH1B1.
Immunogen:	PAFAH1B1 (NP_000421, 1 a.a. ~ 110 a.a) partial recombinant protein with GST tag. MW of the GST tag alone is 26 KDa.
Sequence:	MVLSQRQRDELNRAIADYLRNSGYEEAYSVFKKEAELDVNEELDKKYAG LLEKKWTSVIRLQKKVMELESKLNAAKEEFTSGGPLGQKRDPKEWIPRP PEKYALSGHRSP
Host:	Mouse
Reactivity:	Human
Isotype:	IgG2a Kappa

Quality Control Testing: Antibody Reactive Against Recombinant Protein.



Western Blot detection against Immunogen (37.84 KDa) .

Storage Buffer: In 1x PBS, pH 7.4

Storage Instruction: Store at -20°C or lower. Aliquot to avoid repeated freezing and thawing.

MSDS: [Download](#)

Datasheet: [Download](#)

Applications

Western Blot (Recombinant protein)

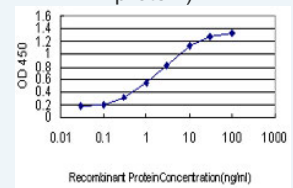
[Protocol Download](#)

Sandwich ELISA (Recombinant protein)

Application Image

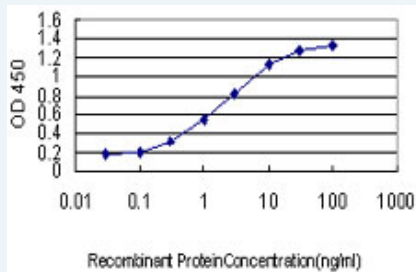
Western Blot (Recombinant protein)

Sandwich ELISA (Recombinant protein)



[enlarge](#)

ELISA



Detection limit for recombinant GST tagged PAFAH1B1 is approximately 0.03ng/ml as a capture antibody.

 [Protocol Download](#)

ELISA

Gene Information

Entrez GeneID: [5048](#)

GeneBank [NM_000430](#)

Accession#:

Protein [NP_000421](#)

Accession#:

Gene Name: PAFAH1B1

Gene Alias: LIS1, LIS2, MDCR, MDS, PAFAH

Gene Description: platelet-activating factor acetylhydrolase, isoform 1b, alpha subunit 45kDa

Omim ID: [247200](#), [601545](#), [607432](#)

Gene Ontology: [Hyperlink](#)

Gene Summary: This locus was identified as encoding a gene that when mutated or lost caused the lissencephaly associated with Miller-Dieker lissencephaly syndrome. This gene encodes the non-catalytic alpha subunit of the intracellular 1b isoform of platelet-activating factor acetylhydrolase, a heterotrimeric enzyme that specifically catalyzes the removal of the acetyl group at the SN-2 position of platelet-activating factor (identified as 1-O-alkyl-2-acetyl-sn-glycerol-3-phosphorylcholine). Two other isoforms of intracellular platelet-activating factor acetylhydrolase exist: one composed of multiple subunits, the other, a single subunit. In addition, a single-subunit isoform of this enzyme is found in serum. [provided by RefSeq]

Other Designations: Platelet-activating factor acetylhydrolase, isoform 1B, alpha subunit, lissencephaly 1 protein, platelet-activating factor acetylhydrolase, isoform 1b, alpha subunit

Gene Pathway

[Ether lipid metabolism](#) [Metabolic pathways](#)

Related Disease

[Alzheimer Disease](#) [Arterial Occlusive Diseases](#) [Atherosclerosis](#) [Atherosclerosis](#)
[Bipolar Disorder](#) [Cardiomyopathy](#), [Dilated Cardiovascular Diseases](#) [Cerebral Infarction](#)
[Chorioamnionitis](#) [Cleft Lip](#) [Cleft Palate](#) [Cognition](#) [Connective Tissue Diseases](#)
[Coronary Artery Disease](#) [Diabetes Mellitus, Type 2](#) [Edema](#) [Epilepsy](#) [Fetal Diseases](#)
[Fetal Membranes, Premature Rupture](#)

... see more

