



SZABO SCANDIC

Part of Europa Biosite

Produktinformation



Forschungsprodukte & Biochemikalien



Zellkultur & Verbrauchsmaterial



Diagnostik & molekulare Diagnostik



Laborgeräte & Service

Weitere Information auf den folgenden Seiten!
See the following pages for more information!



Lieferung & Zahlungsart

siehe unsere [Liefer- und Versandbedingungen](#)

Zuschläge

- Mindermengenzuschlag
- Trockeneiszuschlag
- Gefahrgutzuschlag
- Expressversand

SZABO-SCANDIC HandelsgmbH

Quellenstraße 110, A-1100 Wien

T. +43(0)1 489 3961-0

F. +43(0)1 489 3961-7

mail@szabo-scandic.com

www.szabo-scandic.com

[linkedin.com/company/szaboscandic](https://www.linkedin.com/company/szaboscandic) 

PAFAH1B1 monoclonal antibody (M03), clone 5A5

Catalog # : H00005048-M03

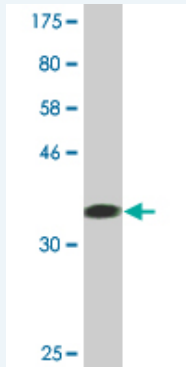
規格 : [100 ug]

[List All](#)

Specification

Product Description:	Mouse monoclonal antibody raised against a partial recombinant PAFAH1B1.
Immunogen:	PAFAH1B1 (NP_000421, 1 a.a. ~ 110 a.a) partial recombinant protein with GST tag. MW of the GST tag alone is 26 KDa.
Sequence:	MVLSQRQRDELNRAIADYLRNNGYEEAYSVFKKEAELDVNEELDKKYAG LLEKKWTSVIRLQKKVMELESKLNEAKEEFTSGGPLGQKRDPKEWIPRP PEKYALSGHRSP
Host:	Mouse
Reactivity:	Human
Isotype:	IgG2a Kappa

Quality Control Testing: Antibody Reactive Against Recombinant Protein.



Western Blot detection against Immunogen (37.84 KDa) .

Storage Buffer: In 1x PBS, pH 7.4

Storage Instruction: Store at -20°C or lower. Aliquot to avoid repeated freezing and thawing.

MSDS: [Download](#)

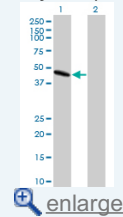
Datasheet: [Download](#)

Applications

Western Blot (Transfected lysate)

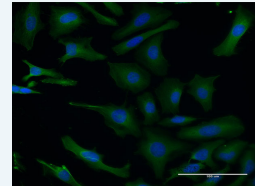
Application Image

Western Blot (Transfected lysate)

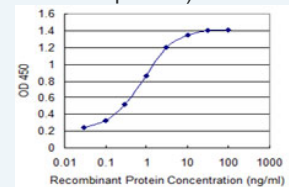


Western Blot (Recombinant protein)

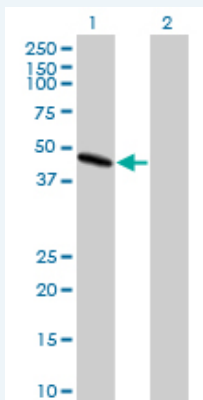
Immunofluorescence



Sandwich ELISA (Recombinant protein)



ELISA



Western Blot analysis of PAFAH1B1 expression in transfected 293T cell line by PAFAH1B1 monoclonal antibody (M03), clone 5A5.

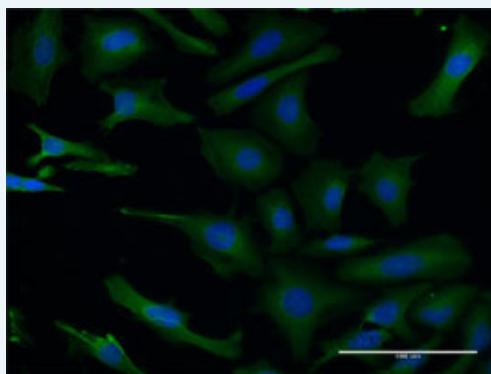
Lane 1: PAFAH1B1 transfected lysate(46.6 KDa).
Lane 2: Non-transfected lysate.

[Protocol Download](#)

Western Blot (Recombinant protein)

[Protocol Download](#)

Immunofluorescence

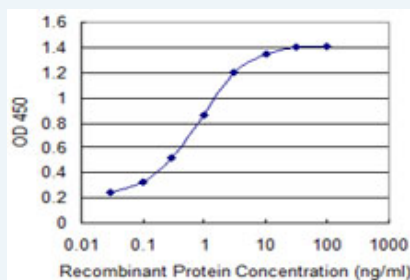


[enlarge this image](#)

Immunofluorescence of monoclonal antibody to PAFAH1B1 on HeLa cell . [antibody concentration 15 ug/ml]

[Protocol Download](#)

Sandwich ELISA (Recombinant protein)



Detection limit for recombinant GST tagged PAFAH1B1 is 0.03 ng/ml as a capture antibody.

[Protocol Download](#)

ELISA

Gene Information

Entrez GeneID: [5048](#)

GeneBank [NM_000430](#)
Accession#:

Protein [NP_000421](#)
Accession#:

Gene Name: PFAH1B1

Gene Alias: LIS1,LIS2,MDCR,MDS,PAFAH

Gene Description: platelet-activating factor acetylhydrolase, isoform 1b, alpha subunit
45kDa

Omim ID: [247200](#), [601545](#), [607432](#)

Gene Ontology: [Hyperlink](#)

Gene Summary: This locus was identified as encoding a gene that when mutated or lost caused the lissencephaly associated with Miller-Dieker lissencephaly syndrome. This gene encodes the non-catalytic alpha subunit of the intracellular 1b isoform of platelet-activating factor acetylhydrolase, a heterotrimeric enzyme that specifically catalyzes the removal of the acetyl group at the SN-2 position of platelet-activating factor (identified as 1-O-alkyl-2-acetyl-sn-glycerol-3-phosphorylcholine). Two other isoforms of intracellular platelet-activating factor acetylhydrolase exist: one composed of multiple subunits, the other, a single subunit. In addition, a single-subunit isoform of this enzyme is found in serum.
[provided by RefSeq]

Other Designations: Platelet-activating factor acetylhydrolase, isoform 1B, alpha subunit,lissencephaly 1 protein,platelet-activating factor acetylhydrolase, isoform 1b, alpha subunit

Gene Pathway

[Ether lipid metabolism](#) [Metabolic pathways](#)

Related Disease

[Alzheimer Disease](#) [Arterial Occlusive Diseases](#) [Atherosclerosis](#) [Atherosclerosis](#)
[Bipolar Disorder](#) [Cardiomyopathy](#), [Dilated Cardiovascular Diseases](#) [Cerebral Infarction](#)
[Chorioamnionitis](#) [Cleft Lip](#) [Cleft Palate](#) [Cognition](#) [Connective Tissue Diseases](#)
[Coronary Artery Disease](#) [Diabetes Mellitus, Type 2](#) [Edema](#) [Epilepsy](#) [Fetal Diseases](#)
[Fetal Membranes](#), [Premature Rupture](#)

... see more