



SZABO SCANDIC

Part of Europa Biosite

Produktinformation



Forschungsprodukte & Biochemikalien



Zellkultur & Verbrauchsmaterial



Diagnostik & molekulare Diagnostik



Laborgeräte & Service

Weitere Information auf den folgenden Seiten!
See the following pages for more information!



Lieferung & Zahlungsart

siehe unsere [Liefer- und Versandbedingungen](#)

Zuschläge

- Mindermengenzuschlag
- Trockeneiszuschlag
- Gefahrgutzuschlag
- Expressversand

SZABO-SCANDIC HandelsgmbH

Quellenstraße 110, A-1100 Wien

T. +43(0)1 489 3961-0

F. +43(0)1 489 3961-7

mail@szabo-scandic.com

www.szabo-scandic.com

[linkedin.com/company/szaboscandic](https://www.linkedin.com/company/szaboscandic) 



SERPINE1 purified MaxPab mouse polyclonal antibody (B01P) MaxPab®

Catalog # : H00005054-B01P

規格 : [50 ug]

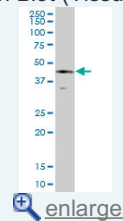
List All

Specification

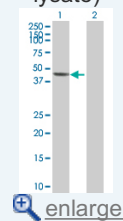
Product Description:	Mouse polyclonal antibody raised against a full-length human SERPINE1 protein.
Immunogen:	SERPINE1 (NP_000593.1, 1 a.a. ~ 402 a.a) full-length human protein.
Sequence:	MQMSPALTCLVLGLALVFGEGSAVHPPSYVAHLASDFGVRVFQQVAQ ASKDRNVFSPYGVASVLAMLQLTTGGETQQQIQAAAMGFKIDDKGMAP ALRHLYKELMGPWNKDEISTTDAIFVQRDLKLVQGFMPHFFRLFRSTVK QVDFSEVERARFIINDWVKHTHTKGMISNLLGKGAVDQLTRLVLVNALYFN GQWKTPFPDSSTHRRLFHKSDGSTVSPMMAQTNKFNYTEFTTPDGHY YDILELPYHGDTLSMFIAAPYEKEVPLSALTNILSAQLISHWKGNMTRLPR LVLPKFSLETEVDLRKPLENLGMTDMFRQFQADFTSLSDQEPLHVAQAL QKVKIEVNESGTVASSSTAVIVSARMAPEEIIIMDRPFLFVVRHNPTGTVLF MGQVMEP
Host:	Mouse
Reactivity:	Human
Quality Control Testing:	Antibody reactive against mammalian transfected lysate.
Storage Buffer:	In 1x PBS, pH 7.4
Storage Instruction:	Store at -20°C or lower. Aliquot to avoid repeated freezing and thawing.
MSDS:	 Download
Datasheet:	 Download

Application Image

Western Blot (Tissue lysate)



Western Blot (Transfected lysate)

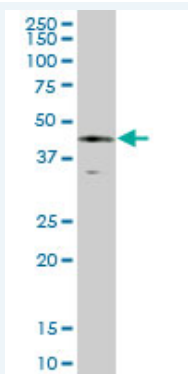


Publication Reference

1. [Quantitative proteomic analysis reveals induction of premature senescence in human umbilical vein endothelial cells exposed to chronic low-dose rate gamma-radiation.](#)
Yentrapalli R, Azimzadeh O, Barjaktarovic Z, Sarioglu H, Wojcik A, Harms-Ringdahl M, Atkinson MJ, Haghdoust S, Tapio S. Proteomics. 2013 Jan 24. doi: 10.1002/pmic.201200463.

Applications

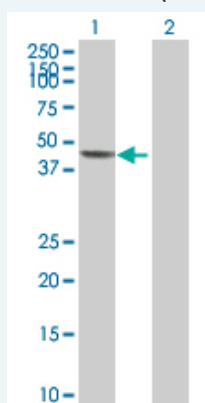
Western Blot (Tissue lysate)



SERPINE1 MaxPab polyclonal antibody. Western Blot analysis of SERPINE1 expression in human spleen.

 [Protocol Download](#)

Western Blot (Transfected lysate)



Western Blot analysis of SERPINE1 expression in transfected 293T cell line ([H00005054-T02](#)) by SERPINE1 MaxPab polyclonal antibody.

Lane 1: SERPINE1 transfected lysate(44.22 KDa).

Lane 2: Non-transfected lysate.

 [Protocol Download](#)

Gene Information

Entrez GeneID: [5054](#)

GeneBank [NM_000602](#)

Accession#:

Protein [NP_000593.1](#)

Accession#:

Gene Name: SERPINE1

Gene Alias: PAI,PAI-1,PAI1,PLANH1

Gene Description: serpin peptidase inhibitor, clade E (nexin, plasminogen activator inhibitor type 1), member 1

Omim ID: [173360](#)

Gene Ontology: [Hyperlink](#)

Gene Summary: This gene encodes a member of the serine proteinase inhibitor (serpin) superfamily. This member is the principal inhibitor of tissue plasminogen activator (tPA) and urokinase (uPA), and hence is an inhibitor of fibrinolysis. Defects in this gene are the cause of plasminogen activator inhibitor-1 deficiency (PAI-1 deficiency), and high concentrations of the gene product are associated with thrombophilia. Alternatively spliced transcript variants encoding different isoforms have been found for this gene. [provided by RefSeq]

Other Designations: plasminogen activator inhibitor, type I, plasminogen activator inhibitor-1, serine (or cysteine) proteinase inhibitor, clade E (nexin, plasminogen activator inhibitor type 1), member 1

Gene Pathway

[Complement and coagulation cascades](#) [p53 signaling pathway](#)

Related Disease

[Abortion, Habitual](#) [Abortion, Spontaneous](#) [Activated Protein C Resistance](#) [Acute Disease](#) [Acute Lung Injury](#) [Acute-Phase Reaction](#) [Adenocarcinoma](#) [Adenomatous Polyposis Coli](#) [Albuminuria](#) [alpha 1-Antitrypsin Deficiency](#) [Alpha-1-antitrypsin deficiency](#) [Alveolar Bone Loss](#) [Alzheimer Disease](#) [Alzheimer disease](#) [Amyloidosis](#) [Amyotrophic Lateral Sclerosis](#) [Amyotrophic lateral sclerosis](#) [Anemia, Sickle Cell](#) [Anemia, sickle cell](#)

... see more

[服務條款](#) | [隱私權政策](#) | [著作及商標](#) | [網站地圖](#)

©2016 亞諾法生技股份有限公司 Abnova Corporation. 版權所有.