



# SZABO SCANDIC

Part of Europa Biosite

## Produktinformation



Forschungsprodukte & Biochemikalien



Zellkultur & Verbrauchsmaterial



Diagnostik & molekulare Diagnostik



Laborgeräte & Service

Weitere Information auf den folgenden Seiten!  
See the following pages for more information!



### Lieferung & Zahlungsart

siehe unsere [Liefer- und Versandbedingungen](#)

### Zuschläge

- Mindermengenzuschlag
- Trockeneiszuschlag
- Gefahrgutzuschlag
- Expressversand

### SZABO-SCANDIC HandelsgmbH

Quellenstraße 110, A-1100 Wien

T. +43(0)1 489 3961-0

F. +43(0)1 489 3961-7

[mail@szabo-scandic.com](mailto:mail@szabo-scandic.com)

[www.szabo-scandic.com](http://www.szabo-scandic.com)

[linkedin.com/company/szaboscandic](https://www.linkedin.com/company/szaboscandic) 



**SERPINB2 purified MaxPab mouse polyclonal antibody (B01P)** MaxPab®

Catalog # : H00005055-B01P

規格 : [ 50 ug ]

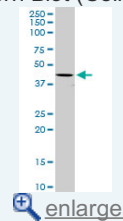
[List All](#)

**Specification**

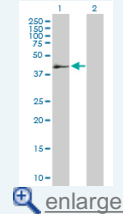
<b>Product Description:</b>	Mouse polyclonal antibody raised against a full-length human SERPINB2 protein.
<b>Immunogen:</b>	SERPINB2 (NP_002566.1, 1 a.a. ~ 415 a.a) full-length human protein.
<b>Sequence:</b>	MEDLCVANTLFA <del>N</del> LFKHLAKASPTQNLFLSPWSISSTMAMVYMGSRGS TEDQMAKVLQFNEVGANAVTPMTPENFTSCGFMQQIQKGSYPDAILQA QAADKIHSSFRSLSSAINASTGNYLLESVNKLFGEKSASFREYIRLCQKY YSSEPQAVDFLECAEEARKKINSWKTQTKGKIPNLLPEGSVDGDTRMV LVNAVYFKGKWKTPFEKLNGLYPFRVNSAQRTPVQMMYLREKLNIGYIE DLKAQILELPYAGDVSMFLLLPEIADVSTGLELLESEITYDKLNKWTSKD KMAEDEVEVYIPQFKLEEYELRSILRSMGMEDAFNKGRANFSGMSERN DLFLSEVFHQAMVDVNEEGTEAAAGTGGVMTGRTGHGGPQFVADHPF LFLIMHKITNCILFFGRFSSP
<b>Host:</b>	Mouse
<b>Reactivity:</b>	Human
<b>Quality Control Testing:</b>	Antibody reactive against mammalian transfected lysate.
<b>Storage Buffer:</b>	In 1x PBS, pH 7.4
<b>Storage Instruction:</b>	Store at -20°C or lower. Aliquot to avoid repeated freezing and thawing.
<b>MSDS:</b>	 <a href="#">Download</a>
<b>Datasheet:</b>	 <a href="#">Download</a>

**Application Image**

Western Blot (Cell lysate)

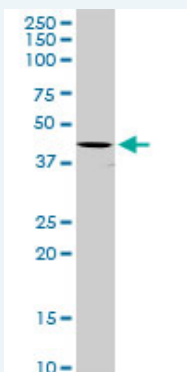


Western Blot (Transfected lysate)




**Applications**

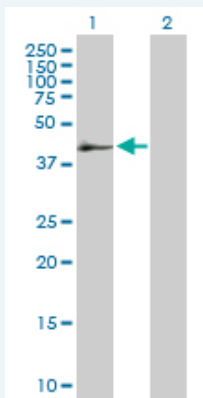
Western Blot (Cell lysate)



SERPINB2 MaxPab polyclonal antibody. Western Blot analysis of SERPINB2 expression in HeLa.

 [Protocol Download](#)

Western Blot (Transfected lysate)



Western Blot analysis of SERPINB2 expression in transfected 293T cell line ([H00005055-T01](#)) by SERPINB2 MaxPab polyclonal antibody.

Lane 1: SERPINB2 transfected lysate(45.65 KDa).  
Lane 2: Non-transfected lysate.

 [Protocol Download](#)

## Gene Information

**Entrez GeneID:** [5055](#)

**GeneBank** [NM\\_002575](#)

**Accession#:**

**Protein** [NP\\_002566.1](#)

**Accession#:**

**Gene Name:** SERPINB2

**Gene Alias:** HsT1201,PAI,PAI-2,PAI2,PLANH2

**Gene** serpin peptidase inhibitor, clade B (ovalbumin), member 2

**Description:**

**Omim ID:** [173390](#)

**Gene Ontology:** [Hyperlink](#)

**Other** plasminogen activator inhibitor 2,plasminogen activator inhibitor, type II

**Designations:** (arginine-serpin),serine (or cysteine) proteinase inhibitor, clade B (ovalbumin), member 2

## Related Disease

[Antiphospholipid Syndrome](#) [Birth Weight](#) [Carcinoma, Non-Small-Cell Lung](#)  
[Cardiovascular Diseases](#) [Cerebral Palsy](#) [Diabetes Mellitus, Type 2](#) [Edema](#)  
[Genetic Predisposition to Disease](#) [Glioblastoma](#) [Glioma Infant, Premature, Diseases](#)  
[Kidney Failure, Chronic](#) [Leukemia](#) [Leukemia, Myeloid, Acute](#) [Lung Neoplasms](#)  
[Lupus Erythematosus, Systemic](#) [Meningeal Neoplasms](#) [Meningioma](#) [Ovarian Neoplasms](#)

... see more

[服務條款](#) | [隱私權政策](#) | [著作及商標](#) | [網站地圖](#)

©2016 亞諾法生技股份有限公司 Abnova Corporation. 版權所有.