



SZABO SCANDIC

Part of Europa Biosite

Produktinformation



Forschungsprodukte & Biochemikalien



Zellkultur & Verbrauchsmaterial



Diagnostik & molekulare Diagnostik



Laborgeräte & Service

Weitere Information auf den folgenden Seiten!
See the following pages for more information!



Lieferung & Zahlungsart

siehe unsere [Liefer- und Versandbedingungen](#)

Zuschläge

- Mindermengenzuschlag
- Trockeneiszuschlag
- Gefahrgutzuschlag
- Expressversand

SZABO-SCANDIC HandelsgmbH

Quellenstraße 110, A-1100 Wien

T. +43(0)1 489 3961-0

F. +43(0)1 489 3961-7

mail@szabo-scandic.com

www.szabo-scandic.com

[linkedin.com/company/szaboscandic](https://www.linkedin.com/company/szaboscandic) 



SERPINB2 purified MaxPab rabbit polyclonal antibody (D01P) MaxPab®

Catalog # : H00005055-D01P

規格 : [100 ug]

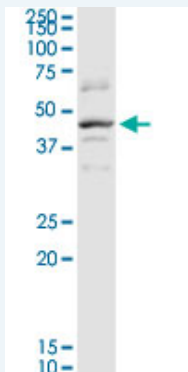
[List All](#)

Specification


Product Description:	Rabbit polyclonal antibody raised against a full-length human SERPINB2 protein.
Immunogen:	SERPINB2 (NP_002566.1, 1 a.a. ~ 415 a.a) full-length human protein.
Sequence:	MEDLCVANTLFA N LFKHLAKASPTQNLFLSPWSISSTMAMVYMGSRGS TEDQMAKVLQFNEVGANAVTPMTPENFTSCGFMQQIQKGSYPDAILQA QAADKIHSSFRSLSSAINASTGNYLLESVNKLFGEKSASFREYIRLCQKY YSSEPQAVDFLECAEEARKKINSWKTQTGKIPNLLPEGSVDGDTRMV LVNAVYFKGKWKTPFEKLNGLYPFRVNSAQRTVPQMMYLREKLNIGYIE DLKAQILELPYAGDVSMFLLLPEIADVSTGLELLESEITYDKLNKWTSKD KMAEDEVVYIPQFKLEEYELRSILRSMGMEDAFNKGRANFSGMSERN DLFLSEVFHQAMVDVNEEGTEAAAGTGGVMTGRTGHGGPQFVADHPF LFLIMHKITNCILFFGRFSSP
Host:	Rabbit
Reactivity:	Human, Mouse
Quality Control Testing:	Antibody reactive against mammalian transfected lysate.
Storage Buffer:	In 1x PBS, pH 7.4
Storage Instruction:	Store at -20°C or lower. Aliquot to avoid repeated freezing and thawing.
MSDS:	 Download
Datasheet:	 Download

Applications

Western Blot (Tissue lysate)



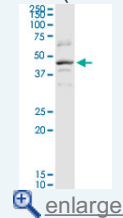
SERPINB2 MaxPab rabbit polyclonal antibody. Western Blot analysis of SERPINB2 expression in human placenta.

 [Protocol Download](#)

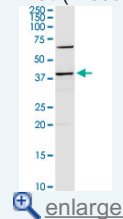
Western Blot (Tissue lysate)

Application Image

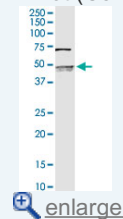
Western Blot (Tissue lysate)



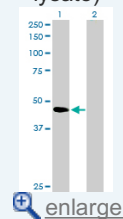
Western Blot (Tissue lysate)

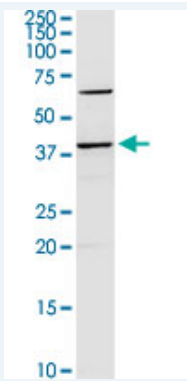


Western Blot (Cell lysate)



Western Blot (Transfected lysate)

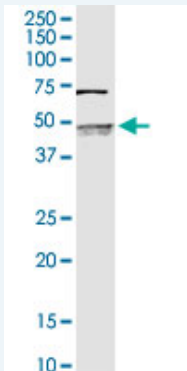




SERPINB2 MaxPab rabbit polyclonal antibody. Western Blot analysis of SERPINB2 expression in mouse spleen.

[Protocol Download](#)

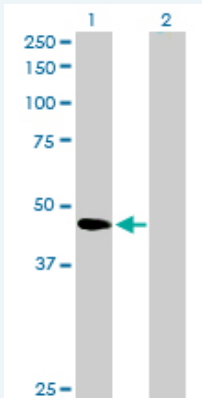
Western Blot (Cell lysate)



SERPINB2 MaxPab rabbit polyclonal antibody. Western Blot analysis of SERPINB2 expression in MCF-7.

[Protocol Download](#)

Western Blot (Transfected lysate)



Western Blot analysis of SERPINB2 expression in transfected 293T cell line (H00005055-T02) by SERPINB2 MaxPab polyclonal antibody.

Lane 1: SERPINB2 transfected lysate(46.60 KDa).

Lane 2: Non-transfected lysate.

[Protocol Download](#)

Gene Information

Entrez GeneID: [5055](#)

GeneBank [NM_002575](#)
Accession#:

Protein [NP_002566.1](#)
Accession#:

Gene Name: SERPINB2

Gene Alias: HsT1201,PAI,PAI-2,PAI2,PLANH2

Gene Description: serpin peptidase inhibitor, clade B (ovalbumin), member 2

Omim ID: [173390](#)

Gene Ontology: [Hyperlink](#)

Other Designations: plasminogen activator inhibitor 2,plasminogen activator inhibitor, type II (arginine-serpin),serine (or cysteine) proteinase inhibitor, clade B (ovalbumin), member 2

Related Disease

[Antiphospholipid Syndrome](#) [Birth Weight](#) [Carcinoma, Non-Small-Cell Lung](#) [Cardiovascular Diseases](#) [Cerebral Palsy](#) [Diabetes Mellitus, Type 2](#) [Edema](#) [Genetic Predisposition to Disease](#) [Glioblastoma](#) [Glioma](#) [Infant, Premature, Diseases](#) [Kidney Failure, Chronic](#) [Leukemia](#) [Leukemia, Myeloid, Acute](#) [Lung Neoplasms](#) [Lupus Erythematosus, Systemic](#) [Meningeal Neoplasms](#) [Meningioma](#) [Ovarian Neoplasms](#)

... see more

[服務條款](#) | [隱私權政策](#) | [著作及商標](#) | [網站地圖](#)

©2016 亞諾法生技股份有限公司 Abnova Corporation. 版權所有.