



SZABO SCANDIC

Part of Europa Biosite

Produktinformation



Forschungsprodukte & Biochemikalien



Zellkultur & Verbrauchsmaterial



Diagnostik & molekulare Diagnostik



Laborgeräte & Service

Weitere Information auf den folgenden Seiten!
See the following pages for more information!



Lieferung & Zahlungsart

siehe unsere [Liefer- und Versandbedingungen](#)

Zuschläge

- Mindermengenzuschlag
- Trockeneiszuschlag
- Gefahrgutzuschlag
- Expressversand

SZABO-SCANDIC HandelsgmbH

Quellenstraße 110, A-1100 Wien

T. +43(0)1 489 3961-0

F. +43(0)1 489 3961-7

mail@szabo-scandic.com

www.szabo-scandic.com

[linkedin.com/company/szaboscandic](https://www.linkedin.com/company/szaboscandic) 

PALM monoclonal antibody (M09), clone 7C5

Catalog # : H00005064-M09

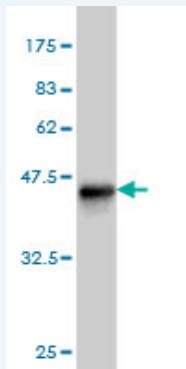
規格 : [100 ug]

[List All](#)

Specification

Product Description:	Mouse monoclonal antibody raised against a partial recombinant PALM.
Immunogen:	PALM (NP_005839, 176 a.a. ~ 284 a.a) partial recombinant protein with GST tag. MW of the GST tag alone is 26 KDa.
Sequence:	VEKDKVTGETRVLSTLLPRQPLPLGIKVEDETKVVHAVDGTAEENGH PLSSSEVDELIHKAEVTLSEAGSTAGAAETRGAVEGAARTTPSRREITG VQAQPGEAT
Host:	Mouse
Reactivity:	Human
Isotype:	IgG3 Kappa

Quality Control Testing: Antibody Reactive Against Recombinant Protein.



Western Blot detection against Immunogen (37.73 KDa) .

Storage Buffer: In 1x PBS, pH 7.4

Storage Instruction: Store at -20°C or lower. Aliquot to avoid repeated freezing and thawing.

MSDS: [Download](#)

Datasheet: [Download](#)

Applications

Western Blot (Recombinant protein)

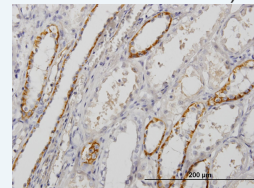
[Protocol Download](#)

Immunohistochemistry (Formalin/PFA-fixed paraffin-embedded sections)

Application Image

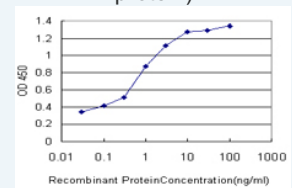
Western Blot (Recombinant protein)

Immunohistochemistry (Formalin/PFA-fixed paraffin-embedded sections)



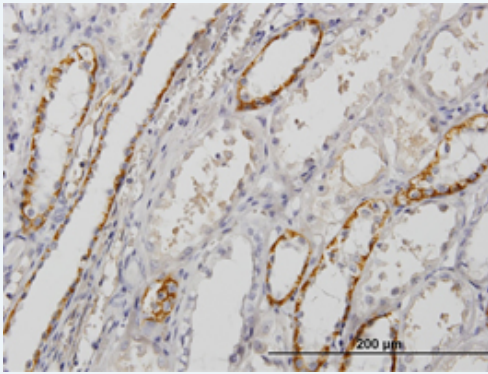
[enlarge](#)

Sandwich ELISA (Recombinant protein)



[enlarge](#)

ELISA

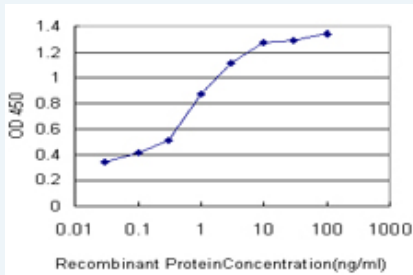


[enlarge this image](#)

Immunoperoxidase of monoclonal antibody to PALM on formalin-fixed paraffin-embedded human kidney. [antibody concentration 1.5 ug/ml]

[Protocol Download](#)

Sandwich ELISA (Recombinant protein)



Detection limit for recombinant GST tagged PALM is approximately 0.03ng/ml as a capture antibody.

[Protocol Download](#)

ELISA

Gene Information

Entrez GeneID: [5064](#)

GeneBank Accession#: [NM_002579](#)

Protein Accession#: [NP_005839](#)

Gene Name: PALM

Gene Alias: KIAA0270

Gene Description: paralemmin

Omim ID: [608134](#)

Gene Ontology: [Hyperlink](#)

Gene Summary: This gene encodes a member of the paralemmin protein family. The product of this gene is a prenylated and palmitoylated phosphoprotein that associates with the cytoplasmic face of plasma membranes and is implicated in plasma membrane dynamics in neurons and other cell types. Several alternatively spliced transcript variants have been identified, but the full-length nature of only two transcript variants has been determined. [provided by RefSeq]

Other Designations: -

