



SZABO SCANDIC

Part of Europa Biosite

Produktinformation



Forschungsprodukte & Biochemikalien



Zellkultur & Verbrauchsmaterial



Diagnostik & molekulare Diagnostik



Laborgeräte & Service

Weitere Information auf den folgenden Seiten!
See the following pages for more information!



Lieferung & Zahlungsart

siehe unsere [Liefer- und Versandbedingungen](#)

Zuschläge

- Mindermengenzuschlag
- Trockeneiszuschlag
- Gefahrgutzuschlag
- Expressversand

SZABO-SCANDIC HandelsgmbH

Quellenstraße 110, A-1100 Wien

T. +43(0)1 489 3961-0

F. +43(0)1 489 3961-7

mail@szabo-scandic.com

www.szabo-scandic.com

[linkedin.com/company/szaboscandic](https://www.linkedin.com/company/szaboscandic) 

PAPPA polyclonal antibody (A01)

Catalog # : H00005069-A01

規格 : [50 uL]

List All

Specification

Product Description: Mouse polyclonal antibody raised against a partial recombinant PAPPA.

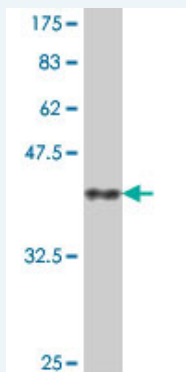
Immunogen: PAPPA (NP_002572, 85 a.a. ~ 194 a.a) partial recombinant protein with GST tag.

Sequence: GATEEPSPPSRALYFSGRGEQLRLRADLELPRDAFTLQVWLRAEGGQ
RSPAVITGLYDKCSYISRDRGWVVGIHTISDQDNKDPYFFSLKTDRARQ
VTTINAHRSYLPG

Host: Mouse

Reactivity: Human

Quality Control Testing: Antibody Reactive Against Recombinant Protein.



Western Blot detection against Immunogen (38.21 KDa) .

Storage Buffer: 50 % glycerol

Storage Instruction: Store at -20°C or lower. Aliquot to avoid repeated freezing and thawing.

MSDS: [Download](#)

Datasheet: [Download](#)

Applications

Western Blot (Recombinant protein)

[Protocol Download](#)

ELISA

Gene Information

Entrez GeneID: [5069](#)

GeneBank Accession#: [NM_002581](#)

Application Image

Western Blot (Recombinant protein)

ELISA

Protein Accession#: [NP_002572](#)

Gene Name: PAPPA

Gene Alias: ASBABP2,DIPLA1,IGFBP-4ase,PAPA,PAPP-A,PAPPA1

Gene Description: pregnancy-associated plasma protein A, pappalysin 1

Omim ID: [176385](#)

Gene Ontology: [Hyperlink](#)

Gene Summary: This gene encodes a secreted metalloproteinase which cleaves insulin-like growth factor binding proteins (IGFBPs). It is thought to be involved in local proliferative processes such as wound healing and bone remodeling. Low plasma level of this protein has been suggested as a biochemical marker for pregnancies with aneuploid fetuses. [provided by RefSeq]

Other Designations: OTTHUMP00000022806,aspecific BCL2 ARE-binding protein 2,differentially placenta 1 expressed protein,insulin-like growth factor-dependent IGF binding protein-4 protease,pregnacy-associated plasma protein A,pregnacy-associated plasma protein A

Related Disease

[Abortion](#), [Habitual Cleft Lip](#) [Cleft Palate](#) [Infertility](#), [Female Tobacco Use Disorder](#)

[服務條款](#) | [隱私權政策](#) | [著作及商標](#) | [網站地圖](#)

©2016 亞諾法生技股份有限公司 Abnova Corporation. 版權所有.