



# SZABO SCANDIC

Part of Europa Biosite

## Produktinformation



Forschungsprodukte & Biochemikalien



Zellkultur & Verbrauchsmaterial



Diagnostik & molekulare Diagnostik



Laborgeräte & Service

Weitere Information auf den folgenden Seiten!  
See the following pages for more information!



### Lieferung & Zahlungsart

siehe unsere [Liefer- und Versandbedingungen](#)

### Zuschläge

- Mindermengenzuschlag
- Trockeneiszuschlag
- Gefahrgutzuschlag
- Expressversand

### SZABO-SCANDIC HandelsgmbH

Quellenstraße 110, A-1100 Wien

T. +43(0)1 489 3961-0

F. +43(0)1 489 3961-7

[mail@szabo-scandic.com](mailto:mail@szabo-scandic.com)

[www.szabo-scandic.com](http://www.szabo-scandic.com)

[linkedin.com/company/szaboscandic](https://www.linkedin.com/company/szaboscandic) 

## PAPPA monoclonal antibody (M01), clone 1G3

Catalog # : H00005069-M01

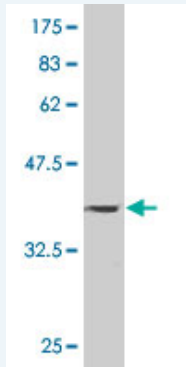
規格 : [ 100 ug ]

List All

### Specification

<b>Product Description:</b>	Mouse monoclonal antibody raised against a partial recombinant PAPPA.
<b>Immunogen:</b>	PAPPA (NP_002572, 85 a.a. ~ 194 a.a) partial recombinant protein with GST tag. MW of the GST tag alone is 26 KDa.
<b>Sequence:</b>	GATEEPSPPSRALYFSGRGEQLRLRADLELPRDAFTLQVWLRAEGGQ RSPAVITGLYDKCSYISRDRGWVVGIHTISDQDNKDPRIYFFSLKTDRARQ VTTINAHRSYLPG
<b>Host:</b>	Mouse
<b>Reactivity:</b>	Human
<b>Isotype:</b>	IgG2b Kappa

**Quality Control Testing:** Antibody Reactive Against Recombinant Protein.



Western Blot detection against Immunogen (37.84 KDa) .

**Storage Buffer:** In 1x PBS, pH 7.4

**Storage Instruction:** Store at -20°C or lower. Aliquot to avoid repeated freezing and thawing.

**MSDS:** [Download](#)

**Datasheet:** [Download](#)

### Applications

**Western Blot (Recombinant protein)**

[Protocol Download](#)

**Sandwich ELISA (Recombinant protein)**

Detection limit for recombinant GST tagged PAPPA is approximately 30ng/ml as a capture antibody.

[Protocol Download](#)

**ELISA**

### Application Image

Western Blot (Recombinant protein)

Sandwich ELISA (Recombinant protein)

ELISA

## Gene Information

---

**Entrez GeneID:** [5069](#)

---

**GeneBank  
Accession#:** [NM\\_002581](#)

---

**Protein  
Accession#:** [NP\\_002572](#)

---

**Gene Name:** PAPPA

---

**Gene Alias:** ASBABP2,DIPLA1,IGFBP-4ase,PAPA,PAPP-A,PAPPA1

---

**Gene  
Description:** pregnancy-associated plasma protein A, pappalysin 1

---

**Omim ID:** [176385](#)

---

**Gene Ontology:** [Hyperlink](#)

---

**Gene Summary:** This gene encodes a secreted metalloproteinase which cleaves insulin-like growth factor binding proteins (IGFBPs). It is thought to be involved in local proliferative processes such as wound healing and bone remodeling. Low plasma level of this protein has been suggested as a biochemical marker for pregnancies with aneuploid fetuses. [provided by RefSeq]

---

**Other  
Designations:** OTTHUMP00000022806,aspecific BCL2 ARE-binding protein 2,differentially placenta 1 expressed protein,insulin-like growth factor-dependent IGF binding protein-4 protease,pregnacy-associated plasma protein A,pregnancy-associated plasma protein A

---

## Related Disease

---

[Abortion](#), [Habitual Cleft Lip](#) [Cleft Palate](#) [Infertility](#), [Female Tobacco Use Disorder](#)

---

[服務條款](#) | [隱私權政策](#) | [著作及商標](#) | [網站地圖](#)

©2016 亞諾法生技股份有限公司 Abnova Corporation. 版權所有.