



# SZABO SCANDIC

Part of Europa Biosite

## Produktinformation



Forschungsprodukte & Biochemikalien



Zellkultur & Verbrauchsmaterial



Diagnostik & molekulare Diagnostik



Laborgeräte & Service

Weitere Information auf den folgenden Seiten!  
See the following pages for more information!



### Lieferung & Zahlungsart

siehe unsere [Liefer- und Versandbedingungen](#)

### Zuschläge

- Mindermengenzuschlag
- Trockeneiszuschlag
- Gefahrgutzuschlag
- Expressversand

### SZABO-SCANDIC HandelsgmbH

Quellenstraße 110, A-1100 Wien

T. +43(0)1 489 3961-0

F. +43(0)1 489 3961-7

[mail@szabo-scandic.com](mailto:mail@szabo-scandic.com)

[www.szabo-scandic.com](http://www.szabo-scandic.com)

[linkedin.com/company/szaboscandic](https://www.linkedin.com/company/szaboscandic) 

## PARK2 purified MaxPab rabbit polyclonal antibody (D01P) MaxPab®

Catalog # : H00005071-D01P

規格 : [ 100 ug ]

[List All](#)

### Specification

**Product Description:** Rabbit polyclonal antibody raised against a full-length human PARK2 protein.

**Immunogen:** PARK2 (AAH22014.1, 1 a.a. ~ 387 a.a) full-length human protein.

**Sequence:**  
 MIVFVRFNSSHGFPVEVSDTSIFQLKEVVAKRQGV PADQLRVIFAGKEL  
 RNDWTVQNCDL DQQSIVHIVQRPWRKGE MNATGGDDPRNAAGGCER  
 EPQSLTRVDLSSSVLPGDSVGLAVILHTDSRKDSPPAGSPAGRSIYNSFY  
 VYCKGPCQRVQPGKLRVQCSTCRQATLTLTQGPSCWDDVLIPNRMSG  
 ECQSPHCPGTSAEFFFKCGAHPTSDKETSVALHLIATNSRNITCITCTDVR  
 SPVLVFQCNSRHVICLDCFHLYCVTRLNDRQFVHDPQLGYSLPCVGTGD  
 TVLRLGALGGFRRGVAGCPNSLIKELHHFRILGEEQYNRYQQYGAEECV  
 LQMGGVLCPRPGCGAGLLPEPDRKVTCEGGNGLGCGYGQRRTK

**Host:** Rabbit

**Reactivity:** Human

**Quality Control Testing:** Antibody reactive against mammalian transfected lysate.

**Storage Buffer:** In 1x PBS, pH 7.4

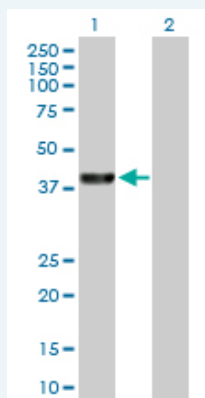
**Storage Instruction:** Store at -20°C or lower. Aliquot to avoid repeated freezing and thawing.

**MSDS:** [Download](#)

**Datasheet:** [Download](#)

### Applications

#### Western Blot (Transfected lysate)



Western Blot analysis of PARK2 expression in transfected 293T cell line ([H00005071-T01](#)) by PARK2 MaxPab polyclonal antibody.

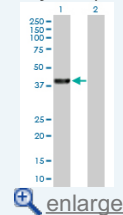
Lane 1: PARK2 transfected lysate(42.40 KDa).

Lane 2: Non-transfected lysate.

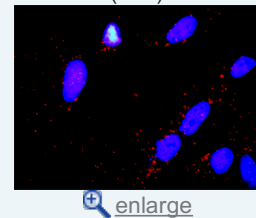
[Protocol Download](#)

### Application Image

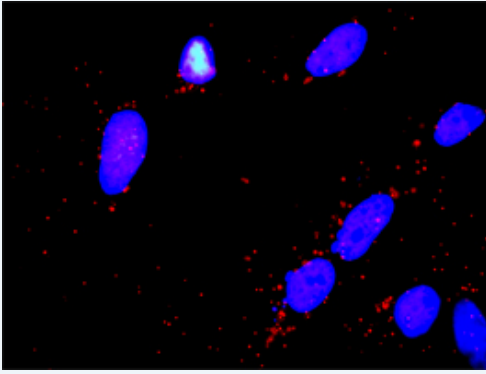
#### Western Blot (Transfected lysate)



#### In situ Proximity Ligation Assay (Cell)



## In situ Proximity Ligation Assay (Cell)



Proximity Ligation Analysis of protein-protein interactions between PARK2 and DLG1. HeLa cells were stained with anti-PARK2 rabbit purified polyclonal 1:1200 and anti-DLG1 mouse monoclonal antibody 1:50. Each red dot represents the detection of protein-protein interaction complex, and nuclei were counterstained with DAPI (blue).

---

### Gene Information

**Entrez GeneID:** [5071](#)

**GeneBank  
Accession#:** [BC022014.2](#)

**Protein  
Accession#:** [AAH22014.1](#)

**Gene Name:** PARK2

**Gene Alias:** AR-JP,LPRS2,PDJ,PRKN

**Gene  
Description:** Parkinson disease (autosomal recessive, juvenile) 2, parkin

**Omim ID:** [211980](#), [600116](#), [602544](#), [604370](#), [607572](#)

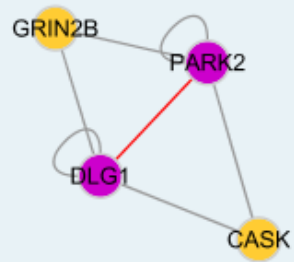
**Gene Ontology:** [Hyperlink](#)

**Gene Summary:** The precise function of this gene is unknown; however, the encoded protein is a component of a multiprotein E3 ubiquitin ligase complex that mediates the targeting of substrate proteins for proteasomal degradation. Mutations in this gene are known to cause Parkinson disease and autosomal recessive juvenile Parkinson disease. Alternative splicing of this gene produces multiple transcript variants encoding distinct isoforms. Additional splice variants of this gene have been described but currently lack transcript support. [provided by RefSeq]

**Other  
Designations:** E3 ubiquitin ligase,OTTHUMP00000017565,OTTHUMP00000017566,OTTHUMP00000017567,parkin,parkin 2

---

### Interactome



### Gene Pathway

[Parkinson's disease](#) [Ubiquitin mediated proteolysis](#)

### Related Disease

[Alzheimer disease](#) [Cardiovascular Diseases](#) [Choice Behavior](#) [Cognition Disorders](#)  
[Diabetes Mellitus, Type 2](#) [Diabetic Nephropathies](#) [Disease Progression](#)  
[Disease Susceptibility](#) [Dystonic Disorders](#) [Edema](#) [Essential Tremor](#) [Essential tremor](#)  
[Genetic Predisposition to Disease](#) [Leprosy](#) [Movement Disorders](#) [Nerve Degeneration](#)  
[Neuropsychological Tests](#) [Paratyphoid Fever](#) [Parkinson Disease](#)

... see more

[服務條款](#) | [隱私權政策](#) | [著作及商標](#) | [網站地圖](#)

©2016 亞諾法生技股份有限公司 Abnova Corporation. 版權所有.